

DAFTAR PUSTAKA

- Awad E, Austin D, Lyndon A, *et al.* 2019. Possible effect of hala extract (*Pandanus tectorius*) on immune status, anti-tumour and resistance to *Yersinia ruckeri* infection in rainbow trout (*Oncorhynchus mykiss*). *Fish & shellfish immunology* 87: 620-6
- Brooks PJ, Theruvathu JA. 2005. DNA adducts from acetaldehyde: implications for alcohol-related carcinogenesis. *Alcohol* 35: 187-93
- De Lima CL, Lima DX, De Souza CA, *et al.* 2018. Description of *Mucor pernambucoensis* (Mucorales, Mucoromycota), a new species isolated from the Brazilian upland rainforest. *Phytotaxa* 350: 274
- Deviana A. 2015. Aktivitas Antibakteri Jamur Endofit dari Akar, Daun dan Buah Tumbuhan Pandan Laut (*Pandanus tectoricus*). *Fakultas Biologi, Jurusan Biologi*
- Erlin E, Rahmat A, Redjeki S, *et al.* 2020. Deteksi Methicilin Resistant *Staphylococcus aureus* (MRSA) Sebagai Penyebab Infeksi Nosokomial Pada Alat-Alat di Ruang Perawatan Bedah.
- Gandjar I SW, Oetari A. 2006. *Mikologi, dasar dan terapan* Jakarta: Yayasan Obor Indonesia
- Gunawan G, Chikmawati T, Sobir S, *et al.* 2016. Fitokimia genus *Baccaurea* spp. *Bioeksperimen: Jurnal Penelitian Biologi* 2: 96-110
- Guzmán-Chávez F, Zwahlen RD, Bovenberg RA, *et al.* 2018. Engineering of the filamentous fungus *Penicillium chrysogenum* as cell factory for natural products. *Frontiers in microbiology* 9: 2768
- Hafsari AR, Oetari A, Salamah A, *et al.* 2011. Pengujian kemampuan antagonistik khamir *Rhodotorula* spp. Asal kebun raya cibodas terhadap kapang dari tanaman tomat terinfeksi dengan co-culture. *Jurnal istek* 5
- Indrawan AN. 2022. Uji antibakteri dengan metode difusi agar dari ekstrak fungi endofit *Botryosphaeria rhodina*.

- Jawetz E, Melnick JL, Adelberg EA. 1980. *Review of medical microbiology*: Springer
- Jawetz M, dan Adelberg. 2001. *Mikrobiologi kedokteran*. Jakarta: Salemba Medika
- Juliantina F, Citra DA, Nirwani B, *et al.* 2009. Manfaat sirih merah (*Piper crocatum*) sebagai agen anti bakterial terhadap bakteri gram positif dan bakteri gram negatif. *Jurnal kedokteran dan kesehatan indonesia*: 12-20
- Kim EJ, Kwon J, Park SH, *et al.* 2011. Metabolite profiling of *Angelica gigas* from different geographical origins using ¹H NMR and UPLC-MS analyses. *Journal of Agricultural and Food Chemistry* 59: 8806-15
- Lyman M, Urbin S, Strout C, *et al.* 2019. The oleaginous red yeast *Rhodotorula/Rhodospiridium*: a factory for industrial bioproducts. *Yeasts in Biotechnology*
- Mutmainah S. 2015. Isolasi Dan Identifikasi Fungi Endofit Pada Rimpang Temulawak (*Curcuma xanthorrhiza Roxb.*) Sebagai Penghasil Senyawa Antibakteri Terhadap *Staphylococcus aureus* DAN *Escherichia coli*. Universitas Islam Negeri Maulana Malik Ibrahim
- Noverita N, Nastiti N, Ningsih EW. 2023. Endophytic Fungus from Soursop (*Annona Muricata* L) and Potential Antibacteria. *Journal of Tropical Biodiversity* 3: 81-90
- Prabasari PI, Sumarya I, Juliasih N. 2019. Daya Hambat Ekstrak Lidah Buaya (*Aloe barbadensis* Miller) Terhadap Pertumbuhan Bakteri *Staphylococcus aureus* Secara In Vitro. *Jurnal Widya Biologi* 10: 23-32
- Radji M, Sumiati A, Rachmayani R, *et al.* 2011. Isolation of fungal endophytes from *Garcinia mangostana* and their antibacterial activity. *African Journal of Biotechnology* 10: 103-7
- Rahmawati N, Sudjarwo E, Widodo E. 2014. Uji aktivitas antibakteri ekstrak herbal terhadap bakteri *Escherichia coli*. *Jurnal Ilmu-Ilmu Peternakan (Indonesian Journal of Animal Science)* 24: 24-31
- Ramadani RD. 2010. Isolasi dan Seleksi Jamur Endofit Sirih Merah (*Piper cf. fragile* Benth.). *Fakultas biologi, jurusan biologi*

- Sarungallo ZL, Susanti CME, Sinaga NI, et al. 2018. Kandungan gizi buah pandan laut (*Pandanus tectorius* Park.) pada tiga tingkat kematangan. *Jurnal Aplikasi Teknologi Pangan* 7
- Sheltami RM, Abdullah I, Ahmad I, et al. 2012. Extraction of cellulose nanocrystals from mengkuang leaves (*Pandanus tectorius*). *Carbohydrate Polymers* 88: 772-9
- Sopalun K, Iamtham S. 2020. Isolation and screening of extracellular enzymatic activity of endophytic fungi isolated from Thai orchids. *South African Journal of Botany* 134: 273-9
- Souza BdS, Sartori DS, Andrade Cd, et al. 2016. Dermatophytosis caused by *Microsporum gypseum* in infants: report of four cases and review of the literature. *Anais brasileiros de dermatologia* 91: 823-5
- Strobel G, Daisy B, Castillo U, et al. 2004. Natural products from endophytic microorganisms. *Journal of Natural products* 67: 257-68
- Strobel GA. 2002. Rainforest endophytes and bioactive products. *Critical reviews in biotechnology* 22: 315-33
- Sukandar D, Hermanto S, Lestari E. 2008. Uji toksisitas ekstrak daun pandan wangi (*Pandanus amaryllifolius* Roxb.) dengan metode brine shrimp lethality test (BSLT).
- Sunariasih NPL, Suada IK, Suniti NW. 2014. Identifikasi jamur endofit dari biji padi dan uji daya hambatnya terhadap *Pyricularia oryzae* Cav. secara in vitro. *E-Jurnal Agroekoteknologi Tropika* 3: 51-60
- Suryani Y. 2020. Mikologi. PT. Freeline Cipta Granesia
- Suryani Y, Taupiqurrahman O. 2021. Mikrobiologi dasar. LP2M UIN Sunan Gunung Djati Bandung
- Thomson LA, Englberger L, Guarino L, et al. 2006. *Pandanus tectorius* (pandanus). *Species profiles for Pacific Island agroforestry*: 28
- Tibpromma S, Hyde KD, Bhat JD, et al. 2018. Identification of endophytic fungi from leaves of Pandanaceae based on their morphotypes and DNA sequence data from southern Thailand. *MycologyKeys*: 25

Wink M. 1999. *Functions of plant secondary metabolites and their exploitation in biotechnology*: Taylor & Francis

Wu C, Tian Y, Yu J, *et al.* 2019. The pandanus tectorius fruit extract (PTF) modulates the gut microbiota and exerts anti-hyperlipidaemic effects. *Phytomedicine* 58: 152863

Yu H, Zhang L, Li L, *et al.* 2010. Recent developments and future prospects of antimicrobial metabolites produced by endophytes. *Microbiological research* 165: 437-49

Zaccardelli M, Vitale S, Luongo L, *et al.* 2008. Morphological and molecular characterization of *Fusarium solani* isolates. *Journal of Phytopathology* 156: 534-41



LAMPIRAN

TABEL LAMPIRAN

Tabel lampiran 1. Uji ANOVA

Tests of Between-Subjects Effects

Dependent Variable: Diameter_Zona_Hambat

Source	Type III Sum of Squares	df	Mean Square	F	Sig.
Corrected Model	1094.010 ^a	21	52.096	142.432	.000
Intercept	137.059	1	137.059	374.726	.000
Namal_Isolat	1015.035	10	101.503	277.515	.000
Jenis_Bakteri	16.832	1	16.832	46.018	.000
Namal_Isolat * Jenis_Bakteri	62.144	10	6.214	16.990	.000
Error	16.093	44	.366		
Total	1247.163	66			
Corrected Total	1110.104	65			

a. R Squared = .986 (Adjusted R Squared = .979)

Tabel lampiran 2. Uji Tukey-HSD

Diameter_Zona_Hambat

Tukey HSD^{a,b}

Namal_Isolat	N	Subset	
		1	2
MEB	6	.0000	
A2	6	.0000	
B2	6	.0500	
D21	6	.0917	
B1	6	.1750	
A1	6	.1967	
D23	6	.3000	
C22	6	.3917	
C21	6	.3967	
D22	6	.4167	
Clindamycin	6		13.8333

Sig.		.980	1.000
------	--	------	-------

Means for groups in homogeneous subsets are displayed.

Based on observed means.

The error term is Mean Square(Error) = .366.

a. Uses Harmonic Mean Sample Size = 6.000.

b. Alpha = 0,05.

Multiple Comparisons

Dependent Variable: Diameter_Zona_Hambat

Tukey HSD

(I) Namal_Isolat	(J) Namal_Isolat	Mean Difference			95% Confidence Interval	
		(I-J)	Std. Error	Sig.	Lower Bound	Upper Bound
Clindamycin	MEB	13.8333*	.34917	.000	12.6486	15.0181
	A1	13.6367*	.34917	.000	12.4519	14.8214
	A2	13.8333*	.34917	.000	12.6486	15.0181
	B1	13.6583*	.34917	.000	12.4736	14.8431
	B2	13.7833*	.34917	.000	12.5986	14.9681
	C21	13.4367*	.34917	.000	12.2519	14.6214
	C22	13.4417*	.34917	.000	12.2569	14.6264
	D21	13.7417*	.34917	.000	12.5569	14.9264
	D22	13.4167*	.34917	.000	12.2319	14.6014
	D23	13.5333*	.34917	.000	12.3486	14.7181
MEB	Clindamycin	-13.8333*	.34917	.000	-15.0181	-12.6486
	A1	-.1967	.34917	1.000	-1.3814	.9881
	A2	.0000	.34917	1.000	-1.1847	1.1847
	B1	-.1750	.34917	1.000	-1.3597	1.0097
	B2	-.0500	.34917	1.000	-1.2347	1.1347
	C21	-.3967	.34917	.986	-1.5814	.7881
	C22	-.3917	.34917	.987	-1.5764	.7931
	D21	-.0917	.34917	1.000	-1.2764	1.0931
	D22	-.4167	.34917	.980	-1.6014	.7681
	D23	-.3000	.34917	.998	-1.4847	.8847
A1	Clindamycin	-13.6367*	.34917	.000	-14.8214	-12.4519
	MEB	.1967	.34917	1.000	-.9881	1.3814
	A2	.1967	.34917	1.000	-.9881	1.3814
	B1	.0217	.34917	1.000	-1.1631	1.2064

	B2	.1467	.34917	1.000	-1.0381	1.3314
	C21	-.2000	.34917	1.000	-1.3847	.9847
	C22	-.1950	.34917	1.000	-1.3797	.9897
	D21	.1050	.34917	1.000	-1.0797	1.2897
	D22	-.2200	.34917	1.000	-1.4047	.9647
	D23	-.1033	.34917	1.000	-1.2881	1.0814
A2	Clindamycin	-13.8333*	.34917	.000	-15.0181	-12.6486
	MEB	.0000	.34917	1.000	-1.1847	1.1847
	A1	-.1967	.34917	1.000	-1.3814	.9881
	B1	-.1750	.34917	1.000	-1.3597	1.0097
	B2	-.0500	.34917	1.000	-1.2347	1.1347
	C21	-.3967	.34917	.986	-1.5814	.7881
	C22	-.3917	.34917	.987	-1.5764	.7931
	D21	-.0917	.34917	1.000	-1.2764	1.0931
	D22	-.4167	.34917	.980	-1.6014	.7681
	D23	-.3000	.34917	.998	-1.4847	.8847
B1	Clindamycin	-13.6583*	.34917	.000	-14.8431	-12.4736
	MEB	.1750	.34917	1.000	-1.0097	1.3597
	A1	-.0217	.34917	1.000	-1.2064	1.1631
	A2	.1750	.34917	1.000	-1.0097	1.3597
	B2	.1250	.34917	1.000	-1.0597	1.3097
	C21	-.2217	.34917	1.000	-1.4064	.9631
	C22	-.2167	.34917	1.000	-1.4014	.9681
	D21	.0833	.34917	1.000	-1.1014	1.2681
	D22	-.2417	.34917	1.000	-1.4264	.9431
	D23	-.1250	.34917	1.000	-1.3097	1.0597
B2	Clindamycin	-13.7833*	.34917	.000	-14.9681	-12.5986
	MEB	.0500	.34917	1.000	-1.1347	1.2347
	A1	-.1467	.34917	1.000	-1.3314	1.0381
	A2	.0500	.34917	1.000	-1.1347	1.2347
	B1	-.1250	.34917	1.000	-1.3097	1.0597
	C21	-.3467	.34917	.995	-1.5314	.8381
	C22	-.3417	.34917	.996	-1.5264	.8431
	D21	-.0417	.34917	1.000	-1.2264	1.1431
	D22	-.3667	.34917	.992	-1.5514	.8181
	D23	-.2500	.34917	1.000	-1.4347	.9347
C21	Clindamycin	-13.4367*	.34917	.000	-14.6214	-12.2519

	MEB	.3967	.34917	.986	-.7881	1.5814
	A1	.2000	.34917	1.000	-.9847	1.3847
	A2	.3967	.34917	.986	-.7881	1.5814
	B1	.2217	.34917	1.000	-.9631	1.4064
	B2	.3467	.34917	.995	-.8381	1.5314
	C22	.0050	.34917	1.000	-1.1797	1.1897
	D21	.3050	.34917	.998	-.8797	1.4897
	D22	-.0200	.34917	1.000	-1.2047	1.1647
	D23	.0967	.34917	1.000	-1.0881	1.2814
C22	Clindamycin	-13.4417*	.34917	.000	-14.6264	-12.2569
	MEB	.3917	.34917	.987	-.7931	1.5764
	A1	.1950	.34917	1.000	-.9897	1.3797
	A2	.3917	.34917	.987	-.7931	1.5764
	B1	.2167	.34917	1.000	-.9681	1.4014
	B2	.3417	.34917	.996	-.8431	1.5264
	C21	-.0050	.34917	1.000	-1.1897	1.1797
	D21	.3000	.34917	.998	-.8847	1.4847
	D22	-.0250	.34917	1.000	-1.2097	1.1597
	D23	.0917	.34917	1.000	-1.0931	1.2764
D21	Clindamycin	-13.7417*	.34917	.000	-14.9264	-12.5569
	MEB	.0917	.34917	1.000	-1.0931	1.2764
	A1	-.1050	.34917	1.000	-1.2897	1.0797
	A2	.0917	.34917	1.000	-1.0931	1.2764
	B1	-.0833	.34917	1.000	-1.2681	1.1014
	B2	.0417	.34917	1.000	-1.1431	1.2264
	C21	-.3050	.34917	.998	-1.4897	.8797
	C22	-.3000	.34917	.998	-1.4847	.8847
	D22	-.3250	.34917	.997	-1.5097	.8597
	D23	-.2083	.34917	1.000	-1.3931	.9764
D22	Clindamycin	-13.4167*	.34917	.000	-14.6014	-12.2319
	MEB	.4167	.34917	.980	-.7681	1.6014
	A1	.2200	.34917	1.000	-.9647	1.4047
	A2	.4167	.34917	.980	-.7681	1.6014
	B1	.2417	.34917	1.000	-.9431	1.4264
	B2	.3667	.34917	.992	-.8181	1.5514
	C21	.0200	.34917	1.000	-1.1647	1.2047
	C22	.0250	.34917	1.000	-1.1597	1.2097

	D21	.3250	.34917	.997	-.8597	1.5097
	D23	.1167	.34917	1.000	-1.0681	1.3014
D23	Clindamycin	-13.5333*	.34917	.000	-14.7181	-12.3486
	MEB	.3000	.34917	.998	-.8847	1.4847
	A1	.1033	.34917	1.000	-1.0814	1.2881
	A2	.3000	.34917	.998	-.8847	1.4847
	B1	.1250	.34917	1.000	-1.0597	1.3097
	B2	.2500	.34917	1.000	-.9347	1.4347
	C21	-.0967	.34917	1.000	-1.2814	1.0881
	C22	-.0917	.34917	1.000	-1.2764	1.0931
	D21	.2083	.34917	1.000	-.9764	1.3931
	D22	-.1167	.34917	1.000	-1.3014	1.0681

Based on observed means.

The error term is Mean Square(Error) = .366.

*. The mean difference is significant at the 0,05 level.



Diameter_Zona_Hambat

Tukey HSD^{a,b}

Interaksi	Subset	
	2	3
A2-S.aureus	N	1
MEB-S. aureus	3	.0000
A1-E. coli	3	.0000
A2-E. coli	3	.0000
B1-E. coli	3	.0000
B2-E. coli	3	.0000
C21- E. coli	3	.0000
C22-E. coli	3	.0000
D21-E. coli	3	.0000
D22-E. coli	3	.0000
D23-E. coli	3	.0000
MEB-E. coli	3	.0000
B2-S. aureus	3	.1000
D21-S. aureus	3	.1833
B1-S.aureus	3	.3500
A1-S. aureus	3	.3933
D23- S. aureus	3	.6000

C22-S. aureus	3	.7833		
C21-S. aureus	3	.7933		
D22-S. aureus	3	.8333		
Clindamycin-E. coli	3		10.2967	
Clindamycin-S. aureus	3			17.3700
Sig.		.981	1.000	1.000

Means for groups in homogeneous subsets are displayed.

Based on observed means.

The error term is Mean Square(Error) = .366.

a. Uses Harmonic Mean Sample Size = 3.000.

b. Alpha = 0,05.



Multiple Comparisons

Dependent Variable: Diameter_Zona_Hambat

Tukey HSD

(I) Interaksi	(J) Interaksi	Mean Difference			95% Confidence Interval	
		(I-J)	Std. Error	Sig.	Lower Bound	Upper Bound
A1-S. aureus	A2-S.aureus	.3933	.49380	1.000	-1.4944	2.2811
	B1-S.aureus	.0433	.49380	1.000	-1.8444	1.9311
	B2-S. aureus	.2933	.49380	1.000	-1.5944	2.1811
	C21-S. aureus	-.4000	.49380	1.000	-2.2877	1.4877
	C22-S. aureus	-.3900	.49380	1.000	-2.2777	1.4977
	D21-S. aureus	.2100	.49380	1.000	-1.6777	2.0977
	D22-S. aureus	-.4400	.49380	1.000	-2.3277	1.4477
	D23- S. aureus	-.2067	.49380	1.000	-2.0944	1.6811
	Clindamycin-S. aureus	-16.9767*	.49380	.000	-18.8644	-15.0889
	MEB-S. aureus	.3933	.49380	1.000	-1.4944	2.2811
	A1-E. coli	.3933	.49380	1.000	-1.4944	2.2811
	A2-E. coli	.3933	.49380	1.000	-1.4944	2.2811
	B1-E. coli	.3933	.49380	1.000	-1.4944	2.2811
	B2-E. coli	.3933	.49380	1.000	-1.4944	2.2811
	C21- E. coli	.3933	.49380	1.000	-1.4944	2.2811
	C22-E. coli	.3933	.49380	1.000	-1.4944	2.2811
	D21-E. coli	.3933	.49380	1.000	-1.4944	2.2811
	D22-E. coli	.3933	.49380	1.000	-1.4944	2.2811
	D23-E. coli	.3933	.49380	1.000	-1.4944	2.2811
	Clindamycin-E. coli	-9.9033*	.49380	.000	-11.7911	-8.0156
MEB-E. coli	.3933	.49380	1.000	-1.4944	2.2811	
A2-S.aureus	A1-S. aureus	-.3933	.49380	1.000	-2.2811	1.4944
	B1-S.aureus	-.3500	.49380	1.000	-2.2377	1.5377
	B2-S. aureus	-.1000	.49380	1.000	-1.9877	1.7877
	C21-S. aureus	-.7933	.49380	.989	-2.6811	1.0944
	C22-S. aureus	-.7833	.49380	.990	-2.6711	1.1044
	D21-S. aureus	-.1833	.49380	1.000	-2.0711	1.7044
	D22-S. aureus	-.8333	.49380	.981	-2.7211	1.0544
	D23- S. aureus	-.6000	.49380	1.000	-2.4877	1.2877
	Clindamycin-S. aureus	-17.3700*	.49380	.000	-19.2577	-15.4823
	MEB-S. aureus	.0000	.49380	1.000	-1.8877	1.8877
	A1-E. coli	.0000	.49380	1.000	-1.8877	1.8877
	A2-E. coli	.0000	.49380	1.000	-1.8877	1.8877
	B1-E. coli	.0000	.49380	1.000	-1.8877	1.8877
	B2-E. coli	.0000	.49380	1.000	-1.8877	1.8877
	C21- E. coli	.0000	.49380	1.000	-1.8877	1.8877
	C22-E. coli	.0000	.49380	1.000	-1.8877	1.8877
	D21-E. coli	.0000	.49380	1.000	-1.8877	1.8877
	D22-E. coli	.0000	.49380	1.000	-1.8877	1.8877

	D23-E. coli	.0000	.49380	1.000	-1.8877	1.8877
	Clindamycin-E. coli	-10.2967*	.49380	.000	-12.1844	-8.4089
	MEB-E. coli	.0000	.49380	1.000	-1.8877	1.8877
B1-S.aureus	A1-S. aureus	-.0433	.49380	1.000	-1.9311	1.8444
	A2-S.aureus	.3500	.49380	1.000	-1.5377	2.2377
	B2-S. aureus	.2500	.49380	1.000	-1.6377	2.1377
	C21-S. aureus	-.4433	.49380	1.000	-2.3311	1.4444
	C22-S. aureus	-.4333	.49380	1.000	-2.3211	1.4544
	D21-S. aureus	.1667	.49380	1.000	-1.7211	2.0544
	D22-S. aureus	-.4833	.49380	1.000	-2.3711	1.4044
	D23- S. aureus	-.2500	.49380	1.000	-2.1377	1.6377
	Clindamycin-S. aureus	-17.0200*	.49380	.000	-18.9077	-15.1323
	MEB-S. aureus	.3500	.49380	1.000	-1.5377	2.2377
	A1-E. coli	.3500	.49380	1.000	-1.5377	2.2377
	A2-E. coli	.3500	.49380	1.000	-1.5377	2.2377
	B1-E. coli	.3500	.49380	1.000	-1.5377	2.2377
	B2-E. coli	.3500	.49380	1.000	-1.5377	2.2377
	C21- E. coli	.3500	.49380	1.000	-1.5377	2.2377
	C22-E. coli	.3500	.49380	1.000	-1.5377	2.2377
	D21-E. coli	.3500	.49380	1.000	-1.5377	2.2377
	D22-E. coli	.3500	.49380	1.000	-1.5377	2.2377
	D23-E. coli	.3500	.49380	1.000	-1.5377	2.2377
	Clindamycin-E. coli	-9.9467*	.49380	.000	-11.8344	-8.0589
	MEB-E. coli	.3500	.49380	1.000	-1.5377	2.2377
B2-S. aureus	A1-S. aureus	-.2933	.49380	1.000	-2.1811	1.5944
	A2-S.aureus	.1000	.49380	1.000	-1.7877	1.9877
	B1-S.aureus	-.2500	.49380	1.000	-2.1377	1.6377
	C21-S. aureus	-.6933	.49380	.998	-2.5811	1.1944
	C22-S. aureus	-.6833	.49380	.998	-2.5711	1.2044
	D21-S. aureus	-.0833	.49380	1.000	-1.9711	1.8044
	D22-S. aureus	-.7333	.49380	.996	-2.6211	1.1544
	D23- S. aureus	-.5000	.49380	1.000	-2.3877	1.3877
	Clindamycin-S. aureus	-17.2700*	.49380	.000	-19.1577	-15.3823
	MEB-S. aureus	.1000	.49380	1.000	-1.7877	1.9877
	A1-E. coli	.1000	.49380	1.000	-1.7877	1.9877
	A2-E. coli	.1000	.49380	1.000	-1.7877	1.9877
	B1-E. coli	.1000	.49380	1.000	-1.7877	1.9877

	B2-E. coli	.1000	.49380	1.000	-1.7877	1.9877
	C21- E. coli	.1000	.49380	1.000	-1.7877	1.9877
	C22-E. coli	.1000	.49380	1.000	-1.7877	1.9877
	D21-E. coli	.1000	.49380	1.000	-1.7877	1.9877
	D22-E. coli	.1000	.49380	1.000	-1.7877	1.9877
	D23-E. coli	.1000	.49380	1.000	-1.7877	1.9877
	Clindamycin-E. coli	-10.1967*	.49380	.000	-12.0844	-8.3089
	MEB-E. coli	.1000	.49380	1.000	-1.7877	1.9877
C21-S. aureus	A1-S. aureus	.4000	.49380	1.000	-1.4877	2.2877
	A2-S.aureus	.7933	.49380	.989	-1.0944	2.6811
	B1-S.aureus	.4433	.49380	1.000	-1.4444	2.3311
	B2-S. aureus	.6933	.49380	.998	-1.1944	2.5811
	C22-S. aureus	.0100	.49380	1.000	-1.8777	1.8977
	D21-S. aureus	.6100	.49380	1.000	-1.2777	2.4977
	D22-S. aureus	-.0400	.49380	1.000	-1.9277	1.8477
	D23- S. aureus	.1933	.49380	1.000	-1.6944	2.0811
	Clindamycin-S. aureus	-16.5767*	.49380	.000	-18.4644	-14.6889
	MEB-S. aureus	.7933	.49380	.989	-1.0944	2.6811
	A1-E. coli	.7933	.49380	.989	-1.0944	2.6811
	A2-E. coli	.7933	.49380	.989	-1.0944	2.6811
	B1-E. coli	.7933	.49380	.989	-1.0944	2.6811
	B2-E. coli	.7933	.49380	.989	-1.0944	2.6811
	C21- E. coli	.7933	.49380	.989	-1.0944	2.6811
	C22-E. coli	.7933	.49380	.989	-1.0944	2.6811
	D21-E. coli	.7933	.49380	.989	-1.0944	2.6811
	D22-E. coli	.7933	.49380	.989	-1.0944	2.6811
	D23-E. coli	.7933	.49380	.989	-1.0944	2.6811
	Clindamycin-E. coli	-9.5033*	.49380	.000	-11.3911	-7.6156
	MEB-E. coli	.7933	.49380	.989	-1.0944	2.6811
C22-S. aureus	A1-S. aureus	.3900	.49380	1.000	-1.4977	2.2777
	A2-S.aureus	.7833	.49380	.990	-1.1044	2.6711
	B1-S.aureus	.4333	.49380	1.000	-1.4544	2.3211
	B2-S. aureus	.6833	.49380	.998	-1.2044	2.5711
	C21-S. aureus	-.0100	.49380	1.000	-1.8977	1.8777
	D21-S. aureus	.6000	.49380	1.000	-1.2877	2.4877
	D22-S. aureus	-.0500	.49380	1.000	-1.9377	1.8377
	D23- S. aureus	.1833	.49380	1.000	-1.7044	2.0711

	Clindamycin-S. aureus	-16.5867*	.49380	.000	-18.4744	-14.6989
	MEB-S. aureus	.7833	.49380	.990	-1.1044	2.6711
	A1-E. coli	.7833	.49380	.990	-1.1044	2.6711
	A2-E. coli	.7833	.49380	.990	-1.1044	2.6711
	B1-E. coli	.7833	.49380	.990	-1.1044	2.6711
	B2-E. coli	.7833	.49380	.990	-1.1044	2.6711
	C21- E. coli	.7833	.49380	.990	-1.1044	2.6711
	C22-E. coli	.7833	.49380	.990	-1.1044	2.6711
	D21-E. coli	.7833	.49380	.990	-1.1044	2.6711
	D22-E. coli	.7833	.49380	.990	-1.1044	2.6711
	D23-E. coli	.7833	.49380	.990	-1.1044	2.6711
	Clindamycin-E. coli	-9.5133*	.49380	.000	-11.4011	-7.6256
	MEB-E. coli	.7833	.49380	.990	-1.1044	2.6711
D21-S. aureus	A1-S. aureus	-.2100	.49380	1.000	-2.0977	1.6777
	A2-S.aureus	.1833	.49380	1.000	-1.7044	2.0711
	B1-S.aureus	-.1667	.49380	1.000	-2.0544	1.7211
	B2-S. aureus	.0833	.49380	1.000	-1.8044	1.9711
	C21-S. aureus	-.6100	.49380	1.000	-2.4977	1.2777
	C22-S. aureus	-.6000	.49380	1.000	-2.4877	1.2877
	D22-S. aureus	-.6500	.49380	.999	-2.5377	1.2377
	D23- S. aureus	-.4167	.49380	1.000	-2.3044	1.4711
	Clindamycin-S. aureus	-17.1867*	.49380	.000	-19.0744	-15.2989
	MEB-S. aureus	.1833	.49380	1.000	-1.7044	2.0711
	A1-E. coli	.1833	.49380	1.000	-1.7044	2.0711
	A2-E. coli	.1833	.49380	1.000	-1.7044	2.0711
	B1-E. coli	.1833	.49380	1.000	-1.7044	2.0711
	B2-E. coli	.1833	.49380	1.000	-1.7044	2.0711
	C21- E. coli	.1833	.49380	1.000	-1.7044	2.0711
	C22-E. coli	.1833	.49380	1.000	-1.7044	2.0711
	D21-E. coli	.1833	.49380	1.000	-1.7044	2.0711
	D22-E. coli	.1833	.49380	1.000	-1.7044	2.0711
	D23-E. coli	.1833	.49380	1.000	-1.7044	2.0711
	Clindamycin-E. coli	-10.1133*	.49380	.000	-12.0011	-8.2256
	MEB-E. coli	.1833	.49380	1.000	-1.7044	2.0711
D22-S. aureus	A1-S. aureus	.4400	.49380	1.000	-1.4477	2.3277
	A2-S.aureus	.8333	.49380	.981	-1.0544	2.7211
	B1-S.aureus	.4833	.49380	1.000	-1.4044	2.3711

B2-S. aureus	.7333	.49380	.996	-1.1544	2.6211	
C21-S. aureus	.0400	.49380	1.000	-1.8477	1.9277	
C22-S. aureus	.0500	.49380	1.000	-1.8377	1.9377	
D21-S. aureus	.6500	.49380	.999	-1.2377	2.5377	
D23- S. aureus	.2333	.49380	1.000	-1.6544	2.1211	
Clindamycin-S. aureus	-16.5367*	.49380	.000	-18.4244	-14.6489	
MEB-S. aureus	.8333	.49380	.981	-1.0544	2.7211	
A1-E. coli	.8333	.49380	.981	-1.0544	2.7211	
A2-E. coli	.8333	.49380	.981	-1.0544	2.7211	
B1-E. coli	.8333	.49380	.981	-1.0544	2.7211	
B2-E. coli	.8333	.49380	.981	-1.0544	2.7211	
C21- E. coli	.8333	.49380	.981	-1.0544	2.7211	
C22-E. coli	.8333	.49380	.981	-1.0544	2.7211	
D21-E. coli	.8333	.49380	.981	-1.0544	2.7211	
D22-E. coli	.8333	.49380	.981	-1.0544	2.7211	
D23-E. coli	.8333	.49380	.981	-1.0544	2.7211	
Clindamycin-E. coli	-9.4633*	.49380	.000	-11.3511	-7.5756	
MEB-E. coli	.8333	.49380	.981	-1.0544	2.7211	
D23- S. aureus	A1-S. aureus	.2067	.49380	1.000	-1.6811	2.0944
	A2-S.aureus	.6000	.49380	1.000	-1.2877	2.4877
	B1-S.aureus	.2500	.49380	1.000	-1.6377	2.1377
	B2-S. aureus	.5000	.49380	1.000	-1.3877	2.3877
	C21-S. aureus	-.1933	.49380	1.000	-2.0811	1.6944
	C22-S. aureus	-.1833	.49380	1.000	-2.0711	1.7044
	D21-S. aureus	.4167	.49380	1.000	-1.4711	2.3044
	D22-S. aureus	-.2333	.49380	1.000	-2.1211	1.6544
	Clindamycin-S. aureus	-16.7700*	.49380	.000	-18.6577	-14.8823
	MEB-S. aureus	.6000	.49380	1.000	-1.2877	2.4877
	A1-E. coli	.6000	.49380	1.000	-1.2877	2.4877
	A2-E. coli	.6000	.49380	1.000	-1.2877	2.4877
	B1-E. coli	.6000	.49380	1.000	-1.2877	2.4877
	B2-E. coli	.6000	.49380	1.000	-1.2877	2.4877
	C21- E. coli	.6000	.49380	1.000	-1.2877	2.4877
	C22-E. coli	.6000	.49380	1.000	-1.2877	2.4877
	D21-E. coli	.6000	.49380	1.000	-1.2877	2.4877
	D22-E. coli	.6000	.49380	1.000	-1.2877	2.4877
	D23-E. coli	.6000	.49380	1.000	-1.2877	2.4877

	Clindamycin-E. coli	-9.6967*	.49380	.000	-11.5844	-7.8089	
	MEB-E. coli	.6000	.49380	1.000	-1.2877	2.4877	
Clindamycin-S. aureus	A1-S. aureus	16.9767*	.49380	.000	15.0889	18.8644	
	A2-S.aureus	17.3700*	.49380	.000	15.4823	19.2577	
	B1-S.aureus	17.0200*	.49380	.000	15.1323	18.9077	
	B2-S. aureus	17.2700*	.49380	.000	15.3823	19.1577	
	C21-S. aureus	16.5767*	.49380	.000	14.6889	18.4644	
	C22-S. aureus	16.5867*	.49380	.000	14.6989	18.4744	
	D21-S. aureus	17.1867*	.49380	.000	15.2989	19.0744	
	D22-S. aureus	16.5367*	.49380	.000	14.6489	18.4244	
	D23- S. aureus	16.7700*	.49380	.000	14.8823	18.6577	
	MEB-S. aureus	17.3700*	.49380	.000	15.4823	19.2577	
	A1-E. coli	17.3700*	.49380	.000	15.4823	19.2577	
	A2-E. coli	17.3700*	.49380	.000	15.4823	19.2577	
	B1-E. coli	17.3700*	.49380	.000	15.4823	19.2577	
	B2-E. coli	17.3700*	.49380	.000	15.4823	19.2577	
	C21- E. coli	17.3700*	.49380	.000	15.4823	19.2577	
	C22-E. coli	17.3700*	.49380	.000	15.4823	19.2577	
	D21-E. coli	17.3700*	.49380	.000	15.4823	19.2577	
	D22-E. coli	17.3700*	.49380	.000	15.4823	19.2577	
	D23-E. coli	17.3700*	.49380	.000	15.4823	19.2577	
		Clindamycin-E. coli	7.0733*	.49380	.000	5.1856	8.9611
		MEB-E. coli	17.3700*	.49380	.000	15.4823	19.2577
	MEB-S. aureus	A1-S. aureus	-.3933	.49380	1.000	-2.2811	1.4944
		A2-S.aureus	.0000	.49380	1.000	-1.8877	1.8877
B1-S.aureus		-.3500	.49380	1.000	-2.2377	1.5377	
B2-S. aureus		-.1000	.49380	1.000	-1.9877	1.7877	
C21-S. aureus		-.7933	.49380	.989	-2.6811	1.0944	
C22-S. aureus		-.7833	.49380	.990	-2.6711	1.1044	
D21-S. aureus		-.1833	.49380	1.000	-2.0711	1.7044	
D22-S. aureus		-.8333	.49380	.981	-2.7211	1.0544	
D23- S. aureus		-.6000	.49380	1.000	-2.4877	1.2877	
		Clindamycin-S. aureus	-17.3700*	.49380	.000	-19.2577	-15.4823
		A1-E. coli	.0000	.49380	1.000	-1.8877	1.8877
		A2-E. coli	.0000	.49380	1.000	-1.8877	1.8877
		B1-E. coli	.0000	.49380	1.000	-1.8877	1.8877
		B2-E. coli	.0000	.49380	1.000	-1.8877	1.8877

	C21- E. coli	.0000	.49380	1.000	-1.8877	1.8877
	C22-E. coli	.0000	.49380	1.000	-1.8877	1.8877
	D21-E. coli	.0000	.49380	1.000	-1.8877	1.8877
	D22-E. coli	.0000	.49380	1.000	-1.8877	1.8877
	D23-E. coli	.0000	.49380	1.000	-1.8877	1.8877
	Clindamycin-E. coli	-10.2967*	.49380	.000	-12.1844	-8.4089
	MEB-E. coli	.0000	.49380	1.000	-1.8877	1.8877
A1-E. coli	A1-S. aureus	-.3933	.49380	1.000	-2.2811	1.4944
	A2-S.aureus	.0000	.49380	1.000	-1.8877	1.8877
	B1-S.aureus	-.3500	.49380	1.000	-2.2377	1.5377
	B2-S. aureus	-.1000	.49380	1.000	-1.9877	1.7877
	C21-S. aureus	-.7933	.49380	.989	-2.6811	1.0944
	C22-S. aureus	-.7833	.49380	.990	-2.6711	1.1044
	D21-S. aureus	-.1833	.49380	1.000	-2.0711	1.7044
	D22-S. aureus	-.8333	.49380	.981	-2.7211	1.0544
	D23- S. aureus	-.6000	.49380	1.000	-2.4877	1.2877
	Clindamycin-S. aureus	-17.3700*	.49380	.000	-19.2577	-15.4823
	MEB-S. aureus	.0000	.49380	1.000	-1.8877	1.8877
	A2-E. coli	.0000	.49380	1.000	-1.8877	1.8877
	B1-E. coli	.0000	.49380	1.000	-1.8877	1.8877
	B2-E. coli	.0000	.49380	1.000	-1.8877	1.8877
	C21- E. coli	.0000	.49380	1.000	-1.8877	1.8877
	C22-E. coli	.0000	.49380	1.000	-1.8877	1.8877
	D21-E. coli	.0000	.49380	1.000	-1.8877	1.8877
	D22-E. coli	.0000	.49380	1.000	-1.8877	1.8877
	D23-E. coli	.0000	.49380	1.000	-1.8877	1.8877
	Clindamycin-E. coli	-10.2967*	.49380	.000	-12.1844	-8.4089
	MEB-E. coli	.0000	.49380	1.000	-1.8877	1.8877
A2-E. coli	A1-S. aureus	-.3933	.49380	1.000	-2.2811	1.4944
	A2-S.aureus	.0000	.49380	1.000	-1.8877	1.8877
	B1-S.aureus	-.3500	.49380	1.000	-2.2377	1.5377
	B2-S. aureus	-.1000	.49380	1.000	-1.9877	1.7877
	C21-S. aureus	-.7933	.49380	.989	-2.6811	1.0944
	C22-S. aureus	-.7833	.49380	.990	-2.6711	1.1044
	D21-S. aureus	-.1833	.49380	1.000	-2.0711	1.7044
	D22-S. aureus	-.8333	.49380	.981	-2.7211	1.0544
	D23- S. aureus	-.6000	.49380	1.000	-2.4877	1.2877

	Clindamycin-S. aureus	-17.3700*	.49380	.000	-19.2577	-15.4823
	MEB-S. aureus	.0000	.49380	1.000	-1.8877	1.8877
	A1-E. coli	.0000	.49380	1.000	-1.8877	1.8877
	B1-E. coli	.0000	.49380	1.000	-1.8877	1.8877
	B2-E. coli	.0000	.49380	1.000	-1.8877	1.8877
	C21- E. coli	.0000	.49380	1.000	-1.8877	1.8877
	C22-E. coli	.0000	.49380	1.000	-1.8877	1.8877
	D21-E. coli	.0000	.49380	1.000	-1.8877	1.8877
	D22-E. coli	.0000	.49380	1.000	-1.8877	1.8877
	D23-E. coli	.0000	.49380	1.000	-1.8877	1.8877
	Clindamycin-E. coli	-10.2967*	.49380	.000	-12.1844	-8.4089
	MEB-E. coli	.0000	.49380	1.000	-1.8877	1.8877
B1-E. coli	A1-S. aureus	-.3933	.49380	1.000	-2.2811	1.4944
	A2-S.aureus	.0000	.49380	1.000	-1.8877	1.8877
	B1-S.aureus	-.3500	.49380	1.000	-2.2377	1.5377
	B2-S. aureus	-.1000	.49380	1.000	-1.9877	1.7877
	C21-S. aureus	-.7933	.49380	.989	-2.6811	1.0944
	C22-S. aureus	-.7833	.49380	.990	-2.6711	1.1044
	D21-S. aureus	-.1833	.49380	1.000	-2.0711	1.7044
	D22-S. aureus	-.8333	.49380	.981	-2.7211	1.0544
	D23- S. aureus	-.6000	.49380	1.000	-2.4877	1.2877
	Clindamycin-S. aureus	-17.3700*	.49380	.000	-19.2577	-15.4823
	MEB-S. aureus	.0000	.49380	1.000	-1.8877	1.8877
	A1-E. coli	.0000	.49380	1.000	-1.8877	1.8877
	A2-E. coli	.0000	.49380	1.000	-1.8877	1.8877
	B2-E. coli	.0000	.49380	1.000	-1.8877	1.8877
	C21- E. coli	.0000	.49380	1.000	-1.8877	1.8877
	C22-E. coli	.0000	.49380	1.000	-1.8877	1.8877
	D21-E. coli	.0000	.49380	1.000	-1.8877	1.8877
	D22-E. coli	.0000	.49380	1.000	-1.8877	1.8877
	D23-E. coli	.0000	.49380	1.000	-1.8877	1.8877
	Clindamycin-E. coli	-10.2967*	.49380	.000	-12.1844	-8.4089
	MEB-E. coli	.0000	.49380	1.000	-1.8877	1.8877
B2-E. coli	A1-S. aureus	-.3933	.49380	1.000	-2.2811	1.4944
	A2-S.aureus	.0000	.49380	1.000	-1.8877	1.8877
	B1-S.aureus	-.3500	.49380	1.000	-2.2377	1.5377
	B2-S. aureus	-.1000	.49380	1.000	-1.9877	1.7877

C21-S. aureus	- .7933	.49380	.989	-2.6811	1.0944	
C22-S. aureus	- .7833	.49380	.990	-2.6711	1.1044	
D21-S. aureus	- .1833	.49380	1.000	-2.0711	1.7044	
D22-S. aureus	- .8333	.49380	.981	-2.7211	1.0544	
D23- S. aureus	- .6000	.49380	1.000	-2.4877	1.2877	
Clindamycin-S. aureus	-17.3700*	.49380	.000	-19.2577	-15.4823	
MEB-S. aureus	.0000	.49380	1.000	-1.8877	1.8877	
A1-E. coli	.0000	.49380	1.000	-1.8877	1.8877	
A2-E. coli	.0000	.49380	1.000	-1.8877	1.8877	
B1-E. coli	.0000	.49380	1.000	-1.8877	1.8877	
C21- E. coli	.0000	.49380	1.000	-1.8877	1.8877	
C22-E. coli	.0000	.49380	1.000	-1.8877	1.8877	
D21-E. coli	.0000	.49380	1.000	-1.8877	1.8877	
D22-E. coli	.0000	.49380	1.000	-1.8877	1.8877	
D23-E. coli	.0000	.49380	1.000	-1.8877	1.8877	
Clindamycin-E. coli	-10.2967*	.49380	.000	-12.1844	-8.4089	
MEB-E. coli	.0000	.49380	1.000	-1.8877	1.8877	
C21- E. coli	A1-S. aureus	- .3933	.49380	1.000	-2.2811	1.4944
A2-S.aureus	.0000	.49380	1.000	-1.8877	1.8877	
B1-S.aureus	- .3500	.49380	1.000	-2.2377	1.5377	
B2-S. aureus	- .1000	.49380	1.000	-1.9877	1.7877	
C21-S. aureus	- .7933	.49380	.989	-2.6811	1.0944	
C22-S. aureus	- .7833	.49380	.990	-2.6711	1.1044	
D21-S. aureus	- .1833	.49380	1.000	-2.0711	1.7044	
D22-S. aureus	- .8333	.49380	.981	-2.7211	1.0544	
D23- S. aureus	- .6000	.49380	1.000	-2.4877	1.2877	
Clindamycin-S. aureus	-17.3700*	.49380	.000	-19.2577	-15.4823	
MEB-S. aureus	.0000	.49380	1.000	-1.8877	1.8877	
A1-E. coli	.0000	.49380	1.000	-1.8877	1.8877	
A2-E. coli	.0000	.49380	1.000	-1.8877	1.8877	
B1-E. coli	.0000	.49380	1.000	-1.8877	1.8877	
B2-E. coli	.0000	.49380	1.000	-1.8877	1.8877	
C22-E. coli	.0000	.49380	1.000	-1.8877	1.8877	
D21-E. coli	.0000	.49380	1.000	-1.8877	1.8877	
D22-E. coli	.0000	.49380	1.000	-1.8877	1.8877	
D23-E. coli	.0000	.49380	1.000	-1.8877	1.8877	
Clindamycin-E. coli	-10.2967*	.49380	.000	-12.1844	-8.4089	

	MEB-E. coli	.0000	.49380	1.000	-1.8877	1.8877
C22-E. coli	A1-S. aureus	-.3933	.49380	1.000	-2.2811	1.4944
	A2-S.aureus	.0000	.49380	1.000	-1.8877	1.8877
	B1-S.aureus	-.3500	.49380	1.000	-2.2377	1.5377
	B2-S. aureus	-.1000	.49380	1.000	-1.9877	1.7877
	C21-S. aureus	-.7933	.49380	.989	-2.6811	1.0944
	C22-S. aureus	-.7833	.49380	.990	-2.6711	1.1044
	D21-S. aureus	-.1833	.49380	1.000	-2.0711	1.7044
	D22-S. aureus	-.8333	.49380	.981	-2.7211	1.0544
	D23- S. aureus	-.6000	.49380	1.000	-2.4877	1.2877
	Clindamycin-S. aureus	-17.3700*	.49380	.000	-19.2577	-15.4823
	MEB-S. aureus	.0000	.49380	1.000	-1.8877	1.8877
	A1-E. coli	.0000	.49380	1.000	-1.8877	1.8877
	A2-E. coli	.0000	.49380	1.000	-1.8877	1.8877
	B1-E. coli	.0000	.49380	1.000	-1.8877	1.8877
	B2-E. coli	.0000	.49380	1.000	-1.8877	1.8877
	C21- E. coli	.0000	.49380	1.000	-1.8877	1.8877
D21-E. coli	.0000	.49380	1.000	-1.8877	1.8877	
D22-E. coli	.0000	.49380	1.000	-1.8877	1.8877	
D23-E. coli	.0000	.49380	1.000	-1.8877	1.8877	
Clindamycin-E. coli	-10.2967*	.49380	.000	-12.1844	-8.4089	
MEB-E. coli	.0000	.49380	1.000	-1.8877	1.8877	
D21-E. coli	A1-S. aureus	-.3933	.49380	1.000	-2.2811	1.4944
	A2-S.aureus	.0000	.49380	1.000	-1.8877	1.8877
	B1-S.aureus	-.3500	.49380	1.000	-2.2377	1.5377
	B2-S. aureus	-.1000	.49380	1.000	-1.9877	1.7877
	C21-S. aureus	-.7933	.49380	.989	-2.6811	1.0944
	C22-S. aureus	-.7833	.49380	.990	-2.6711	1.1044
	D21-S. aureus	-.1833	.49380	1.000	-2.0711	1.7044
	D22-S. aureus	-.8333	.49380	.981	-2.7211	1.0544
	D23- S. aureus	-.6000	.49380	1.000	-2.4877	1.2877
	Clindamycin-S. aureus	-17.3700*	.49380	.000	-19.2577	-15.4823
	MEB-S. aureus	.0000	.49380	1.000	-1.8877	1.8877
	A1-E. coli	.0000	.49380	1.000	-1.8877	1.8877
	A2-E. coli	.0000	.49380	1.000	-1.8877	1.8877
	B1-E. coli	.0000	.49380	1.000	-1.8877	1.8877
	B2-E. coli	.0000	.49380	1.000	-1.8877	1.8877

	C21- E. coli	.0000	.49380	1.000	-1.8877	1.8877
	C22-E. coli	.0000	.49380	1.000	-1.8877	1.8877
	D22-E. coli	.0000	.49380	1.000	-1.8877	1.8877
	D23-E. coli	.0000	.49380	1.000	-1.8877	1.8877
	Clindamycin-E. coli	-10.2967*	.49380	.000	-12.1844	-8.4089
	MEB-E. coli	.0000	.49380	1.000	-1.8877	1.8877
D22-E. coli	A1-S. aureus	-.3933	.49380	1.000	-2.2811	1.4944
	A2-S.aureus	.0000	.49380	1.000	-1.8877	1.8877
	B1-S.aureus	-.3500	.49380	1.000	-2.2377	1.5377
	B2-S. aureus	-.1000	.49380	1.000	-1.9877	1.7877
	C21-S. aureus	-.7933	.49380	.989	-2.6811	1.0944
	C22-S. aureus	-.7833	.49380	.990	-2.6711	1.1044
	D21-S. aureus	-.1833	.49380	1.000	-2.0711	1.7044
	D22-S. aureus	-.8333	.49380	.981	-2.7211	1.0544
	D23- S. aureus	-.6000	.49380	1.000	-2.4877	1.2877
	Clindamycin-S. aureus	-17.3700*	.49380	.000	-19.2577	-15.4823
	MEB-S. aureus	.0000	.49380	1.000	-1.8877	1.8877
	A1-E. coli	.0000	.49380	1.000	-1.8877	1.8877
	A2-E. coli	.0000	.49380	1.000	-1.8877	1.8877
	B1-E. coli	.0000	.49380	1.000	-1.8877	1.8877
	B2-E. coli	.0000	.49380	1.000	-1.8877	1.8877
	C21- E. coli	.0000	.49380	1.000	-1.8877	1.8877
	C22-E. coli	.0000	.49380	1.000	-1.8877	1.8877
	D21-E. coli	.0000	.49380	1.000	-1.8877	1.8877
	D23-E. coli	.0000	.49380	1.000	-1.8877	1.8877
	Clindamycin-E. coli	-10.2967*	.49380	.000	-12.1844	-8.4089
	MEB-E. coli	.0000	.49380	1.000	-1.8877	1.8877
D23-E. coli	A1-S. aureus	-.3933	.49380	1.000	-2.2811	1.4944
	A2-S.aureus	.0000	.49380	1.000	-1.8877	1.8877
	B1-S.aureus	-.3500	.49380	1.000	-2.2377	1.5377
	B2-S. aureus	-.1000	.49380	1.000	-1.9877	1.7877
	C21-S. aureus	-.7933	.49380	.989	-2.6811	1.0944
	C22-S. aureus	-.7833	.49380	.990	-2.6711	1.1044
	D21-S. aureus	-.1833	.49380	1.000	-2.0711	1.7044
	D22-S. aureus	-.8333	.49380	.981	-2.7211	1.0544
	D23- S. aureus	-.6000	.49380	1.000	-2.4877	1.2877
	Clindamycin-S. aureus	-17.3700*	.49380	.000	-19.2577	-15.4823

	MEB-S. aureus	.0000	.49380	1.000	-1.8877	1.8877
	A1-E. coli	.0000	.49380	1.000	-1.8877	1.8877
	A2-E. coli	.0000	.49380	1.000	-1.8877	1.8877
	B1-E. coli	.0000	.49380	1.000	-1.8877	1.8877
	B2-E. coli	.0000	.49380	1.000	-1.8877	1.8877
	C21- E. coli	.0000	.49380	1.000	-1.8877	1.8877
	C22-E. coli	.0000	.49380	1.000	-1.8877	1.8877
	D21-E. coli	.0000	.49380	1.000	-1.8877	1.8877
	D22-E. coli	.0000	.49380	1.000	-1.8877	1.8877
	Clindamycin-E. coli	-10.2967*	.49380	.000	-12.1844	-8.4089
	MEB-E. coli	.0000	.49380	1.000	-1.8877	1.8877
Clindamycin-E. coli	A1-S. aureus	9.9033*	.49380	.000	8.0156	11.7911
	A2-S.aureus	10.2967*	.49380	.000	8.4089	12.1844
	B1-S.aureus	9.9467*	.49380	.000	8.0589	11.8344
	B2-S. aureus	10.1967*	.49380	.000	8.3089	12.0844
	C21-S. aureus	9.5033*	.49380	.000	7.6156	11.3911
	C22-S. aureus	9.5133*	.49380	.000	7.6256	11.4011
	D21-S. aureus	10.1133*	.49380	.000	8.2256	12.0011
	D22-S. aureus	9.4633*	.49380	.000	7.5756	11.3511
	D23- S. aureus	9.6967*	.49380	.000	7.8089	11.5844
	Clindamycin-S. aureus	-7.0733*	.49380	.000	-8.9611	-5.1856
	MEB-S. aureus	10.2967*	.49380	.000	8.4089	12.1844
	A1-E. coli	10.2967*	.49380	.000	8.4089	12.1844
	A2-E. coli	10.2967*	.49380	.000	8.4089	12.1844
	B1-E. coli	10.2967*	.49380	.000	8.4089	12.1844
	B2-E. coli	10.2967*	.49380	.000	8.4089	12.1844
	C21- E. coli	10.2967*	.49380	.000	8.4089	12.1844
	C22-E. coli	10.2967*	.49380	.000	8.4089	12.1844
	D21-E. coli	10.2967*	.49380	.000	8.4089	12.1844
	D22-E. coli	10.2967*	.49380	.000	8.4089	12.1844
	D23-E. coli	10.2967*	.49380	.000	8.4089	12.1844
	MEB-E. coli	10.2967*	.49380	.000	8.4089	12.1844
MEB-E. coli	A1-S. aureus	-.3933	.49380	1.000	-2.2811	1.4944
	A2-S.aureus	.0000	.49380	1.000	-1.8877	1.8877
	B1-S.aureus	-.3500	.49380	1.000	-2.2377	1.5377
	B2-S. aureus	-.1000	.49380	1.000	-1.9877	1.7877
	C21-S. aureus	-.7933	.49380	.989	-2.6811	1.0944

C22-S. aureus	- .7833	.49380	.990	-2.6711	1.1044
D21-S. aureus	- .1833	.49380	1.000	-2.0711	1.7044
D22-S. aureus	- .8333	.49380	.981	-2.7211	1.0544
D23- S. aureus	- .6000	.49380	1.000	-2.4877	1.2877
Clindamycin-S. aureus	-17.3700*	.49380	.000	-19.2577	-15.4823
MEB-S. aureus	.0000	.49380	1.000	-1.8877	1.8877
A1-E. coli	.0000	.49380	1.000	-1.8877	1.8877
A2-E. coli	.0000	.49380	1.000	-1.8877	1.8877
B1-E. coli	.0000	.49380	1.000	-1.8877	1.8877
B2-E. coli	.0000	.49380	1.000	-1.8877	1.8877
C21- E. coli	.0000	.49380	1.000	-1.8877	1.8877
C22-E. coli	.0000	.49380	1.000	-1.8877	1.8877
D21-E. coli	.0000	.49380	1.000	-1.8877	1.8877
D22-E. coli	.0000	.49380	1.000	-1.8877	1.8877
D23-E. coli	.0000	.49380	1.000	-1.8877	1.8877
Clindamycin-E. coli	-10.2967*	.49380	.000	-12.1844	-8.4089

Based on observed means.

The error term is Mean Square(Error) = .366.

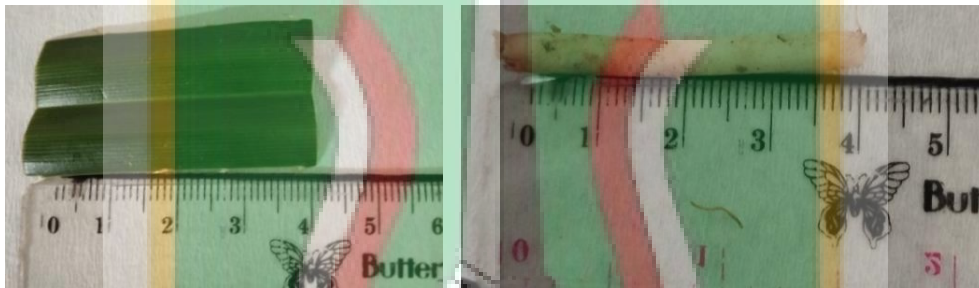
*. The mean difference is significant at the 0,05 level.



GAMBAR LAMPIRAN



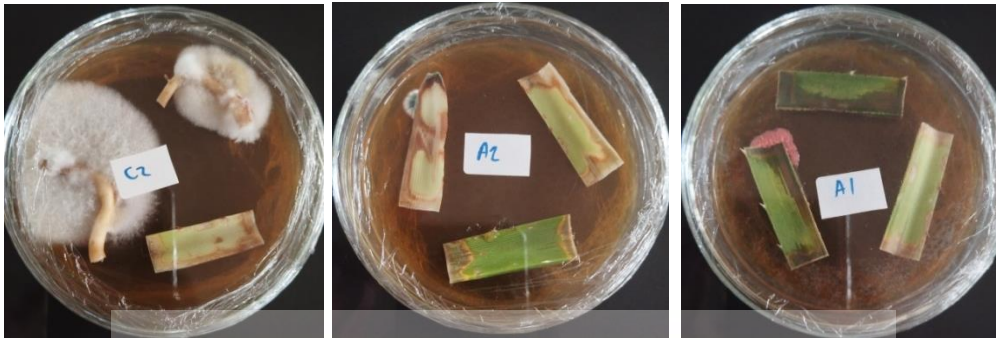
Gambar lampiran 1. Pengambilan Sampel Pandan Laut



Gambar lampiran 2. Pemotongan Sampel Untuk Ditanam; Daun (kiri) dan Akar (Kanan)



Gambar lampiran 3. Perendaman Sampel dengan *clorox*; Daun (kiri) dan Akar (Kanan)



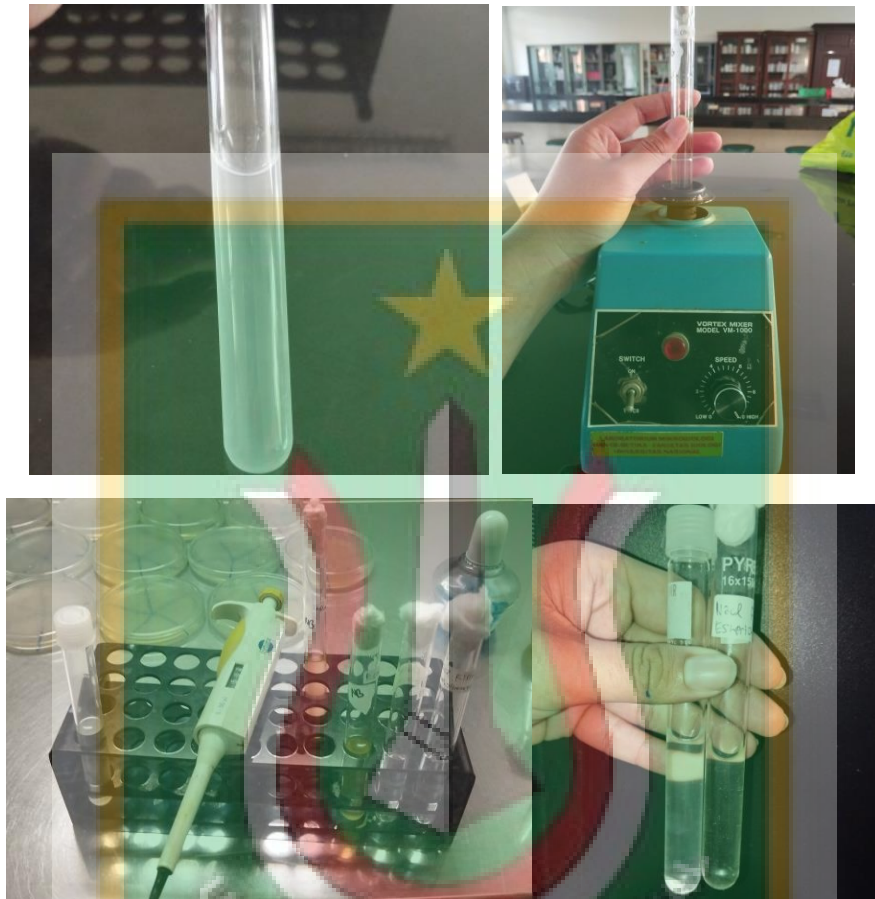
Gambar lampiran 4. Jamur Endofit Yang Muncul Dari Sampel



Gambar lampiran 5. Fermentasi Jamur Endofit Dalam Rotary Shaker



Gambar lampiran 6. Hasil Fermentasi Setelah 10 Hari



Gambar lampiran 7. Persiapan Penanaman Isolat Bakteri

AKTIVITAS ANTIBAKTERI METABOLIT SEKUNDER JAMUR ENDOFIT PANDAN LAUT (*Pandanus tectorius*) TERHADAP *Staphylococcus aureus* DAN *Escherichia coli*

ORIGINALITY REPORT

16%

SIMILARITY INDEX

15%

INTERNET SOURCES

8%

PUBLICATIONS

9%

STUDENT PAPERS

PRIMARY SOURCES

1	Submitted to Universitas Nasional Student Paper	4%
2	nanopdf.com Internet Source	2%
3	pt.scribd.com Internet Source	2%
4	fr.scribd.com Internet Source	1%
5	www.researchgate.net Internet Source	1%
6	repository.ub.ac.id Internet Source	1%
7	adoc.pub Internet Source	1%
8	www.scribd.com Internet Source	<1%

docobook.com