

## CHAPTER IV

### DATA ANALYSIS

In this section, researchers clarify explicitly about the film description and data analysis. The results of this analysis are carried out through data analysis concerning the portrayal of masculinity, Classification of traits and the influences of John Wick characteristic on the portrayal of masculinity. The data examines the portraits of masculinities, character traits and impacts in order to answer research problems of John Wick Movie 2014.

#### 4.1 Data Description

The data analysis carried out by researchers is related to the portrayal of masculinity, the result of this research which is the portraits of masculinity and character traits by main character (John Wick) are based on Janet Salzman Chafetz seven concepts of masculinity that consists portraits of masculinity through seven concepts, 22 amount of masculinity traits and the description of his characteristic influences on masculinity portrayal. Overall, in John Wick Movie by Derek Kolstad the most widely portrait of seven concepts masculinity that occurred are interpersonal and Personal character

##### 4.1.1 Movie Description

According to Fandom, John Wick (retroactively titled John Wick: Chapter 1) is a 2014 American neo-noir action thriller film directed by Chad Stahelski and David Leitch (uncredited), and was written by Derek Kolstad. It stars Keanu

Reeves as the title character John Wick, alongside Michael Nyqvist, Alfie Allen, Adrienne Palicki, Bridget Moynahan, Dean Winters, Ian McShane, John Leguizamo, and Willem Dafoe.

The story focuses on John Wick (Reeves) who seeks revenge on the son of a Russian crime lord for stealing his vintage car and killing his puppy, which serves as a memento of his recently deceased wife, Helen. Stahelski and David Leitch directed the film together, though only Stahelski was credited (The John Wicki, n.d.)

#### 4.2 Data Analysis

The masculine value of each different cultural environment and development It also has influenced the concept of stereotype values of masculinity community. (Ardia, 2017). The development of the value of masculinity differs from time to time, even in the millennial era. The values of masculinity and femininity have begun to shift in his implication, for example Women's work was initially carried out by Women now can be done by men and so too. For example, like the cooking that is usually dominated by women, now men can also cook and even participate in cooking competitions. (Ibrahim, 2007)

To analyze the portrayal of masculinity in John Wick - 2014, especially the characteristics of masculine, the researcher carried out seven indications which existed in men who were considered as masculine by Janet Salzman Chafetz. These seven Indications are:

Appearance

Functionally

Sexuality

Emotionally

Intellectual

Interpersonal

Personal character

Moreover, the researcher is figuring out what and how many traits that depict masculinity and furthermore the researcher is also trying to describe what is the impact of masculinity which affected John Wick towards these seven indications.

#### 4.2.1 Appearances

According to the concept proposed by Janet Saltzman Chafetz (2006), masculinity can be seen from the physical appearance of a man, namely masculine, which has several traits such as athletic, strength, persistent, brave and has super powers within him.

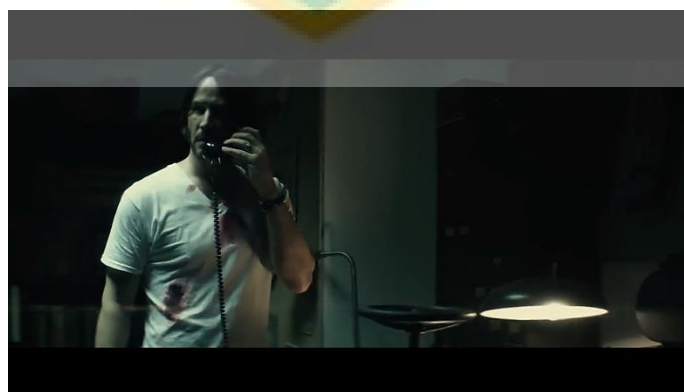


Figure 4.1 John Wick is receiving a telephone call.

This scene portraying John Wick was receiving a telephone call from his former boss Viggo after dismantling his battle equipment in order to prepare for his retaliation. In this scene we can see the appearance of John Wick character played by Keanu Reeves has a height of 6 feet 1 inches or the equivalent of 186 cm, and has a squared chest. Moreover, the addition of his long hair and bloodstain on his shirt made his looks more pugnacious and manly.

According to Janet Salzman Chafets (2006), the indication of masculine can be seen through the appearance of a man with several traits such as athletic and strength; these two traits can be seen in a clear way in this scene, considering John Wick is a mature man who had these two traits and moreover these two traits was been constructed in society as a masculine representation, where a masculine men are depicted have a muscular and athletic physique in accordance with the statement “The square shape of the chest as well as the muscular arms and small hair on her chest and long hair indicate that a person experienced sexual growth as an adult male and was considered more terrifying than men in general.” (Ardia, 2017). Furthermore, this concept was supported by the statement of Prabawaningrum, “People who have experienced growth in height and weight are one of the characteristic indicators of men who have grown up” (Prabawaningrum, 2019)

The influence which is caused by John Wick characteristic on the portrayal of masculinity in this scene is enchanting on his body image while also boosting his self-esteem, according to a study published in *Psychology of Men & Masculinities*, men who perceived themselves as more muscular had higher body

satisfaction and self-esteem (Frederick & Morrison, 1996). Furthermore, this also increases his self-confidence and gives a positive impact to him. Achieving a muscular body can increase self-confidence and have a positive impact on mental health. Regular exercise, which often accompanies muscle development, is known to release endorphins, improve mood, reduce anxiety and depression symptoms, and promote overall well-being (Craft & Perna, 2004; Conn, 2010).



Figure 4.2 John Wick shower appearance.

This scene portrays John Wick while he is showering after getting attacked by Iosef and his friends and wants to hunt and revenge Iosef because attacking him, stole his car and kill his dog. In this scene we can see the appearance of John Wick physique where he has a muscular body. Moreover, the addition of the tattoos in his body made his looks more terrified.

According to Janet Salzman Chafets (2006), the indication of masculine can be seen through the appearance of a man with several traits such as brave and have super power within him; these two traits can be seen in a clear way in this scene, considering John Wick is a mature man who had these two traits and moreover these two traits was been constructed in society as a masculine representation where a man who has a tattoo will be seen as a brave, tough and

have more power in accordance with the statement by Dr. Beverly Yuen Thompson "Tattoos have historically been associated with expressions of masculinity, symbolizing traits such as strength, bravery, and toughness. For many men, getting tattoos can be a way to assert their identity and demonstrate their masculinity." (Thompson, B.Y. (2012). *Covered in Ink: Tattoos, Women, and the Politics of the Body*. NYU Press.). Furthermore, this concept was supported by the statement of Dr. Jeremiah C. Gibbs, "Tattoos have historically been associated with expressions of masculinity, symbolizing traits such as strength, bravery, and toughness. For many men, getting tattoos can be a way to assert their identity and demonstrate their masculinity." (Gibbs, J.C. (2006). *Tattooed: The Sociogenesis of a Body Art*. University of Toronto Press.).

The influence which is caused by John Wick characteristic on the portrayal of masculinity in this scene is the portrayal of muscular body and tattoos boosting his body image as a representation on power and strength such as developing a muscular physique can enhance body image and boost self-esteem for individuals who aspire to have a muscular body (Frederick & Morrison, 1996). And tattoos will be symbolizing the strength of a strength to assert their identity and demonstrated their masculinity (Thompson, B.Y. (2012).

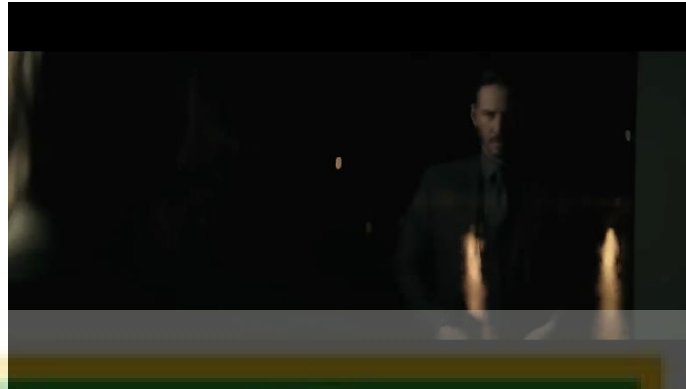


Figure 4.3 John Wick wearing his assassin suit.

This scene portrays John Wick when he wears his assassin suit and prepares himself before doing a battle against a group of assassins which were sent to kill him by his former boss Viggo. In this scene, we can see the appearance of John Wick when he becomes an assassin, which dressed himself with a black tuxedo made him look elegant, calm, powerful and mysterious as a man.

According to (Chafetz, 2006), the indication of masculine can be seen through the appearance of a man with some traits such as powerful; this trait can be seen in a clear way in this scene, considering John Wick is a mature man who had this trait and moreover this trait has been constructed in society as a masculine representation where a man who dressed like this will be seen as a powerful and sophisticated in accordance with the statement that stated "The tuxedo has long been associated with notions of masculinity and social status. Originally designed as a formal alternative to the tailcoat, the tuxedo represents a refined and sophisticated style that conveys a sense of authority and power." (Campbell, 2015)

The influence which is caused by John Wick characteristic on the portrayal of masculinity in this scene is the portrayal of wearing tuxedo as a male suit is

increasing his sense of power and confidence aligning with the statement that stated "Masculinity is a performance, and clothing is one of the key elements in that performance. Dressing well can enhance a man's confidence, self-esteem, and sense of power, all of which are traditionally associated with masculinity." (Simpson, 2013)

#### 4.2.2 Functionally

The functional concept in masculinity proposed by (Chafetz, 2006) puts the male as the provider and backup or as the foundations for the family and can fulfill their own needs.

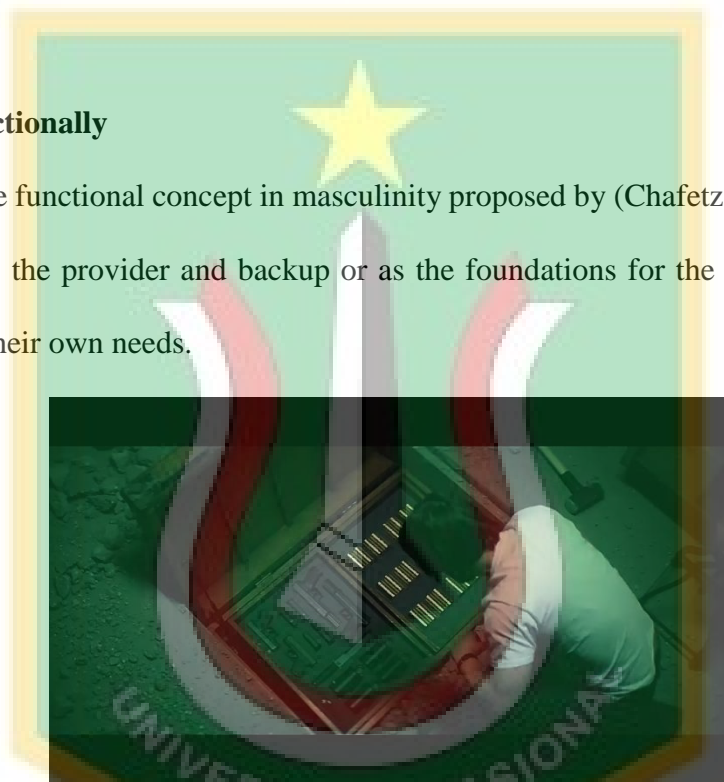


Figure 4.4 John Wick expose his old equipment as an assassin in his basement.

Even though John Wick doesn't perform a specific action that would suggest a functional aspect, there are various scenes that subtly demonstrate the character's functional aspect naturally, this indication is visible on these scenes where John unload and expose his assassination equipment's at his basement in his house to prepare for his retaliation, this preparation is his own needs to hunt down Iosef the one whose kill his dog and stole his car.



According to Janet Salzman Chafetz, “functional concepts describe male as the provider and backup or as the foundations for the family and can fulfill their own needs” (Chafetz, 2006). The indication of these masculine concepts can be seen through the functional aspect, these traits can be seen in a clear way in this scene where John Wick can provide himself an equipment and needs as a mature man to track down his enemy. This trait is being constructed in society where a mature man is expected to be primary earners and providers for his own and his families. This interpretation is appropriate with the statement of Dr. R.W. Connel where "The provider role has long been considered a central component of traditional masculinity. Men are expected to be the primary earners and providers for their families, and this role is often seen as a key marker of masculinity." (Connell R. W., 2005).

The influence that John Wick's characteristic has on the portrayal of masculinity in this scene is that this characteristic boosts his sense of identity, self-worth, and self-esteem in the face of society's expectations that a mature man must be dependable in every situation, which are supported by the statement of Dr. Michael Kimmel, Sociologist and Author: "Reliability is often associated with traditional masculine ideals such as dependability and responsibility. Men are expected to be reliable in fulfilling their commitments and obligations, which is seen as a key aspect of masculinity." (Kimmel D. M., 1996)

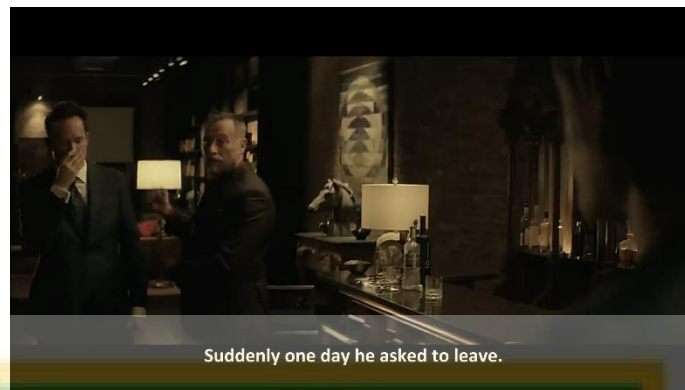


Figure 4.5 Viggo describes John Wick to his son Iosef.

This scene is where Viggo, who is John Wick's former boss, describes John Wick's past life as an assassin. Viggo tells Iosef, his son, that John Wick is the one who made a foundation of his business. He tells Iosef that John Wick successfully finished an Impossible task that he gave in order to exchange for his freedom. And as the result, John was successfully finished the task. The task that he finished that time become the foundation of Viggo business now. From this dialog, we know John is man with commitment, focus and responsible which made him different than general man and increase his masculine representation. The dialog of this scene can be seen below:

***Viggo: “Suddenly, one day he asked to leave, it was over a woman of course.”***

***Viggo: “So I made a deal with him, I gave him an impossible task. a job no one could have pulled off.”***

***Viggo: “The bodies he buried that day, lay the foundation of what we are now.”***

According to Janet Salzman Chafetz, “functional concepts describe male as the provider and backup or as the foundations for the family and can fulfill their own needs” (Chafetz, 2006). The indication of this masculine concepts can be seen through the functional aspect, these traits can be seen in a clear way in this

scene where John Wick can be a backup or reliable person for his family, which is Viggo, when John Wick was still working as an assassin. This trait is being constructed in society where a mature man is expected to be a reliable person for himself and his family. This interpretation is appropriate with the statement of Dr. Michael Kimmel, "Reliability is often associated with traditional masculine ideals such as dependability and responsibility. Men are expected to be reliable in fulfilling their commitments and obligations, which is seen as a key aspect of masculinity." (Kimmel D. M., 1996)

The influence which is caused by John Wick characteristic on the portrayal of masculinity in this scene is this characteristic is making him a responsible, trustworthy and dependable person in order as a mainstay while he is in charge to finished the hard task, accordance to societal expectations of masculinity, which are supported by the statement of Dr. Ronald F. Levant, "Reliability is often seen as a cornerstone of traditional masculinity. Men who are perceived as reliable are often viewed as responsible, trustworthy, and dependable, aligning with societal expectations of masculinity." (Levant D. R., 2011)

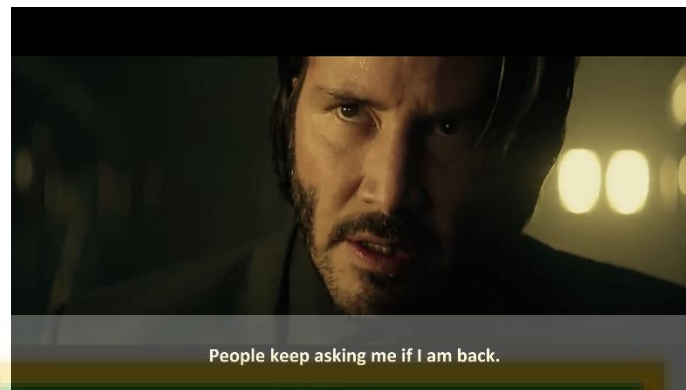


Figure 4.6 John Wick claims that he's back in the employ.

This scene is where John Wick has been captured by Viggo and his men, on this scene John Wick tells Viggo how desperate his life after the death of his wife until that dog came arrived as a last give and hope from Helen Wick in order to accompany John Wick for the rest of his life. And then, suddenly that precious times had been crushed by Viggo son, Iosef when he stole his car and killed his beloved dog. And the result of this conditions is John Wick decided to comeback as an assassin, which is aims to revenge Iosef. His statement has proven his masculinity, that he will protect his honor as a man which is take a revenge to Iosef and he openly said that he wasn't afraid of any obstacle. (Kimmel D. M., 1996)

According to Janet Salzman Chafetz, "functional concepts describe male as the provider and backup or as the foundations for the family and can fulfill their own needs" (Chafetz, 2006). The indication of this masculine concepts can be seen through the functional aspect, these traits can be seen in a clear way in this scene where John Wick felt responsible and can't protected the last gift from his wife, so he decided to become an assassin again which is aims to do a revenge to Iosef, because killed his dog and stole the beautiful moment form John Wick.

This trait is being constructed in society where a mature man is expected and depicted to be responsible in every situation, even when it must become to a retaliation in order to defend his honor (Brannon, R. (1976).

The influence which is caused by John Wick characteristic on the portrayal of masculinity in this scene is this characteristic is encouraging himself to face threats or to stand up for himself and others while dealing with challenges and threats as an affirmation of masculinity accordance with the statement of Dr. Michael Kimmel, "Defending honor is often linked to traditional notions of masculinity, where men are expected to be assertive, brave, and willing to protect their reputation and the reputation of those they care about. This behavior can be seen as an affirmation of masculinity, reinforcing the belief that 'real men' stand up for themselves and others." (Kimmel D. M., 1996)

#### 4.2.3 Sexuality

The concept of masculinity that Janet Saltzman Chafetz put forward is Sexual, where sexual here is meant with men who have close experiences with a woman or can be said a man who is in a relationship with the opposite gender. (Chafetz, 2006).



Figure 4.7 John Wick is watching video of his wife.

This scene is where John Wick watch the video of his wife when she is still alive while himself was nearly dying after fighting Viggo and his men on abandoned runway. John watching that video in order to reminiscing his beloved wife, and motivates himself to not give up even when he is nearly dying, moreover this is also proving that he is a care and loyal person which not hesitate to embrace his emotional openness that contradicts with his depicted as a tough guy.

According to Janet Salzman Chafetz, "Sexuality is meant with men who have close experiences with a woman or can be said a man who is in a relationship with the opposite gender." (Chafetz, 2006). The indication of this masculine concepts can be seen through the sexuality aspect, these traits can be seen in a clear way in this scene where John Wick is care and loyal to his wife and still thinking about her, even in the face of death as a mature man, moreover these two traits had been constructed in a society as attributes of progressive masculinity, where a man moving away from his outdated violence form to care and loyal partner in order to extend his emotions and realize how important the essence of relationship aligning with statement by Dr. Michael Kimmel, "Caring

and loyalty can be seen as attributes of progressive masculinity, where men are moving away from the outdated 'tough guy' image to embrace emotional openness and the importance of authentic relationships." (Kimmel, M. (2019). *Healing from Hate: How Young Men Get Into—and out of—Violent Extremism*. University of California Press.).

The influence which is caused by John Wick characteristic on the portrayal of masculinity in this scene is this characteristic challenge the traditional view about masculinity and presenting a positive masculinity portrait, moreover this characteristic is increasing emotional intelligent to a man which brings out a positive value to the portrayal of masculinity accordance with the statement by Dr. Niobe Way, "Embracing qualities like caring and loyalty can challenge the traditional narrow view of masculinity and promote a more positive portrayal. Men who prioritize empathy and form meaningful connections with others contribute to a more compassionate and emotionally intelligent version of masculinity." (Way, N. (2013). *Deep secrets: Boys' friendships and the crisis of connection*. Harvard University Press.).



Figure 4.8 John and Hellen anniversary.

This scene is where John Wick and Hellen Wick is having an anniversary diner to celebrate their marriage. In this scene, John Wick gives Hellen a



necklace as a gift to remind his love to Hellen as his wife, afterward they looked at each other and kissing to indicate their loves for each other. Furthermore, this scene indicates that John Wick as a mature man has a straight sexual orientation or known as heterosexual (Kinsey, 1948).

According to Janet Salzman Chafetz, "Sexuality is meant with men who have close experiences with a woman or can be said a man who is in a relationship with the opposite gender." (Chafetz, 2006). The indication of this masculine concepts can be seen through the sexuality aspect, these traits can be seen in a clear way in these scenes where John Wick gives his wife a gift and kissing her which indicates his respect as a mature man. Moreover, this trait was constructed in society where masculine man always has a respect trait to his partners in order to express themselves and pursue their passion without being constrained by gender norms (Connell, 2005).

The influence which is caused by John Wick characteristic on the portrayal of masculinity in this scene is this characteristic is increasing the communicational skill and emotional intelligence towards masculinity portrayals where John Wick present that masculine man can understand the importance of expressing emotions, listening to others, and treating people with dignity and understanding, which is aligning with the statement by Terry Real, "Being a respectful man involves acknowledging and embracing one's emotions, as well as actively engaging in open and empathetic communication with others." (Real, 2018).





Figure 4.9 John Kissing His wife for the last time.

This Scene is where John Wick gives Hellen last kiss which aims as last final respect after knowing her death, and as a gratitude her loves and accepting that gives John wick a chance to live with a better life. Moreover, this indicates John Wick as a mature man is truly loving Hellen as his wife (Hooks, 2000).

According to Janet Salzman Chafetz, “Sexuality is meant with men who have close experiences with a woman or can be said a man who is in a relationship with the opposite gender.” (Chafetz, 2006). The indication of this masculine concepts can be seen through the sexuality aspect, these traits can be seen in a clear way in these scenes where John kiss his wife for the last time which his love as her husband. Moreover, this trait was constructed in society where masculine man always has as a husband always sharing their feelings and emotions with their partners contribute to healthier and more fulfilling marriages (Gottman, J., & Silver, N., 2015).

The influence of John Wick's characteristic on the portrayal of masculinity in this scene is opened to emotional intimacy and vulnerability towards masculinity portrayals where John Wick present that masculine man can share

their feelings and emotions with their partners, which contributes to a healthier and more fulfilling marriage (Gottman, J., & Silver, N., 2015).

#### 4.2.4 Emotionally

According to Chafetz, men who are strong and masculine can manage and conceal their emotions (Chafetz, 2006)



*Figure 4.10 John Wick attends Hellen funeral.*

This scene is where John Wick attends the funeral of his wife, in this scene is clearly seen that John Wick is trying to control and suppress his sadness because the death of his wife (Levant, 1992).

According to Janet Salzman Chafetz, “men who are strong and masculine can manage and conceal their emotions.” (Chafetz, 2006). The indication of this masculine concepts can be seen through the emotionally aspect with some traits such as calm, this trait can be seen in a clear way in these scenes where John suppresses his emotion of sadness. Moreover, this trait was constructed in society where masculine man learn to suppress emotionality to conform to traditional male norms (Levant, 1992).

The influence of John Wick's characteristic on the portrayal of masculinity in this scene is increasing stress and hard to coping with emotional experience on masculinity portrayals, where John Wick present that masculine man is always suppress their emotions thus its turn to negative outcome (Psychological, 2018).



Figure 4.11 John is reading his dead wife letter.

This scene is where John Wick is reading his dead wife letter, Hellen. She gives John a dog as a last present from him in order to accompany his life and to share his feeling, moreover this dog is a substitute of Hellen when she is not around him anymore. In this is scene is clearly seen that John Wick is trying to control his sadness and try not to get carried away with grief after his wife's death (Levant, 1992).

According to Janet Salzman Chafetz, "men who are strong and masculine can manage and conceal their emotions." (Chafetz, 2006). The indication of this masculine concepts can be seen through the emotionally aspect with some traits such as sad, this trait can be seen in a clear way in these scenes where John try control his emotion and not to grief with his wife death. Moreover, this trait was

constructed in society where masculine man learn to suppress emotionality to conform to traditional male norms (Levant, 1992).

The influence of John Wick's characteristic on the portrayal of masculinity in this scene is increasing stress and hard to coping with emotional experience on masculinity portrayals, where John Wick present that masculine man is always suppress their emotions thus when its turn to negative outcome (Psychological, 2018).



Figure 4.12 John Wick claims that he's going to kill Iosef.

This scene is where John Wick has been captured by Viggo and his men, on this scene John Wick tells Viggo how desperate his life after the death of his wife until that dog came arrived as a last give and hope from Helen Wick in order to accompany John Wick for the rest of his life. And then, suddenly that precious times had been crushed by Viggo son, Iosef when he stole his car and killed his beloved dog. And the result of this conditions is John Wick decided to comeback as an assassin, which is aims to revenge Iosef. Thus, John asked Viggo to surrender his son Iosef or he will regret for tragic death of his son. His statement has indicated his masculinity where he was trying to control his anger with ask nicely and tolerance to Viggo (Ibrahim, 2007)

According to Janet Salzman Chafetz, “men who are strong and masculine can manage and conceal their emotions.” (Chafetz, 2006). The indication of this masculine concepts can be seen through the emotionally aspect with some traits such as anger, this trait can be seen in a clear way in these scenes where John try control his anger with ask nicely and tolerance to Viggo. Moreover, this trait was constructed in society where masculine man learn to suppress emotionality to conform to traditional male norms (Levant, 1992).

The influence of John Wick's characteristic on the portrayal of masculinity in this scene is increasing aggressive behaviors and violence outcome towards others on masculinity portrayals, where John Wick present that masculine man is always control their anger and resulting violence situations where his kindness is not appreciated (Thomas, D. E., & Barlow, F. K, 2008).

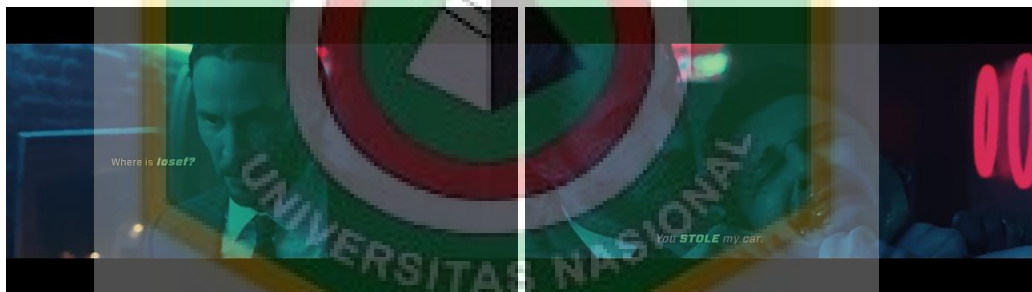


Figure 4.13 John attacking Iosef friend in red circle.

This scene is where John Wick assail Victor, Iosef friend who help Iosef for attacking John Wick in his home, killed his dog and stole his car. John asking him where is Iosef and killed him as a punishment for him because he is trying to confront John Wick. This act is aim to do a revenge on Iosef and his men which been spotted by Winston in red circle club. Moreover, this action has indicated his masculinity where he was trying to control his anger and remain

calm so that he doesn't get carried away with his anger (Ibrahim, 2007). The dialog of this scene can be seen below:

***John: Where is Iosef?***

***Victor: Fuck you motherfucker!***

***John: Where's Iosef?***

***Victor: Bath house, downstairs.***

***John: I crawled while you were sneaking, and you killed my dog. Die...***

According to Janet Salzman Chafetz, "men who are strong and masculine can manage and conceal their emotions." (Chafetz, 2006). The indication of this masculine concepts can be seen through the emotionally aspect such as calm, this trait can be seen in a clear way in these scenes where John can control his anger and remain calm. Moreover, this trait was constructed in society where masculine man learn to suppress emotionality to conform to traditional male norms (Levant, 1992).

The influence of John Wick's characteristic on the portrayal of masculinity in this scene is increasing aggressive behaviors and violence outcome towards others on masculinity portrayals, where John Wick present that masculine man is always control their anger and resulting violence situations where his kindness is not appreciated (Thomas, D. E., & Barlow, F. K, 2008).

#### **4.2.5 Intellectual**

According to (Chafetz, 2006), masculinity may be seen in the intellectual male; masculine males think intelligently, logically, rationally, and objectively.

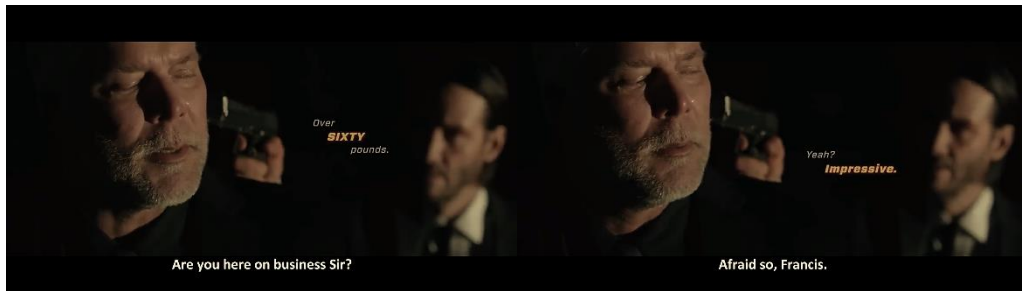


Figure 4.14 John Wick suggest Francis to take a night off.

This scene is where John Wick meets his old acquaintance as a security guard on red circle, whose name is Francis. John chat a while with him and suggest him to take a night off because John don't want to kill him and avoid to make a new enemy which is it's not necessary to do. Moreover, this action has indicated his masculinity where he was negotiated with Francis to avoid unwanted situation as the result of John Wick objectively thought that Francis is not his target. (Connell R. W., 2005)

According to Janet Salzman Chafetz, "masculine males think intelligently, logically, rationally, and objectively." (Chafetz, 2006) The indication of this masculine concepts can be seen through the Intellectual aspect such as objectively, one of these traits can be seen in a clear way in these scenes where John thought objectively that Francis is not his target and suggest him to take a night off as a solution for Francis, to avoid unwanted situation that can cause disadvantage for John. Moreover, this trait was constructed in society where masculine man is expected to find a solution and solving a problem with intelligence, objective and rational thinking (Rowena, C., & Rutherford, J, 2014).



The influence of John Wick's characteristic on the portrayal of masculinity in this scene is reinforce traditional gender norms and stereotype, but this also contribute to suppression emotion and vulnerability of a man on masculinity portrayal where John Wick present that masculine man is always thinking with rational and objectively and always calm in every situation (Johnson, 2014)



Figure 4.15 John silently kill Iosef bodyguards.

This scene is where John Wick is attacking Red Circle Club, he is silently killing Iosef bodyguards one by one with a knife and closed the mouth of the bodyguards with his hand, to prevent the voice of that bodyguards so that no one's know he is already attacking them. This action is a result of his rational and intelligence thought as an assassin in order to prevent disadvantage condition to him (Connell R. W., 2005)

According to Janet Salzman Chafetz, “masculine males think intelligently, logically, rationally, and objectively.” (Chafetz, 2006) The indication of this masculine concepts can be seen through the Intellectual aspect such as intelligent and rational, these traits can be seen in a clear way in these scenes where John use his intelligence and rational when killing Iosef bodyguards. Moreover, this trait was constructed in society where masculine man is expected to find a



solution and solving a problem with intelligence, objective and rational thinking (Rowena, C., & Rutherford, J, 2014).

The influence of John Wick's characteristic on the portrayal of masculinity in this scene is reinforce traditional gender norms and stereotype, but this also contribute to suppression emotion and vulnerability of a man on masculinity portrayal where John Wick present that masculine man is always thinking with rational and objectively before do an action and always calm in every situation (Johnson, 2014)



Figure 4.16 John Wick Observing the situation of Red Circle Club.

This scene is where John Wick is observing the situation of Red Circle Club after he killed Iosef bodyguard, He is logically thinking whether any one on that room is realize of his existence after killed one Iosef bodyguards. Moreover, he is searching and planning an attacking strategy to Iosef by doing this quick observation in order to find an effective outcome and prevent disadvantage condition to him (Connell R. W., 2005)

According to Janet Salzman Chafetz, “masculine males think intelligently, logically, rationally, and objectively.” (Chafetz, 2006) The indication of this masculine concepts can be seen through the Intellectual aspect with several traits

such as intelligent and objective, these traits can be seen in a clear way in these scenes where John use his intelligence and objective when he is observing his surroundings environment. Moreover, this trait was constructed in society where masculine man is expected to find a solution and solving a problem with intelligence, objective and rational thinking (Rowena, C., & Rutherford, J, 2014).

The influence of John Wick's characteristic on the portrayal of masculinity in this scene is increasing the ability for making decision and contribute to perception of competence and leadership value of a man on masculinity portrayal where John Wick present that masculine man is always observing and make decision with his intelligence and rational (Kimmel M., 2011)

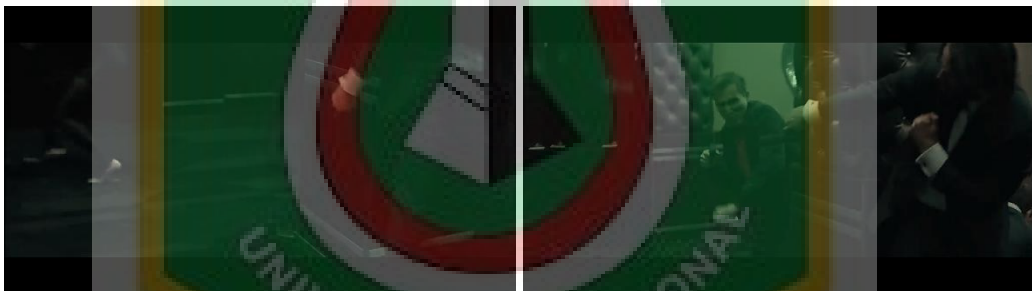


Figure 4.17 John Battling one of Iosef bodyguards.

This scene is where John Wick battling one of Iosef bodyguards, the bodyguards is hiding in the back of the pillar so John can see and kill him. But John finds an effective way to kill this man, which is John shoot his foot so the bodyguards can bring himself out from his covering place and at the same time John shoot him right in his head. It can be seen that John using his intelligence and his logic to battling this man, moreover John making a right decision when

he must shoot this man to create an opportunity for himself (Connell R. W., 2005)

According to Janet Salzman Chafetz, “masculine males think intelligently, logically, rationally, and objectively.” (Chafetz, 2006) The indication of this masculine concepts can be seen through the Intellectual aspect such as intelligent and logic, these traits can be seen in a clear way in these scenes where John use his intelligence and logic when he is fighting. Moreover, this trait was constructed in society where masculine man is expected to find a solution and solving a problem with intelligence, objective and rational thinking (Rowena, C., & Rutherford, J, 2014).

The influence of John Wick's characteristic on the portrayal of masculinity in this scene is strengthen the impression as a leader and masculine of a man on portrayal of masculinity where John Wick present that masculine man is a strategic thinker and intelligent (Alice Eagly and Linda L. Carli, 2007)

#### **4.2.6 Interpersonally**

Interpersonally refers to how a person's personality interacts with the people around him (Chafetz, 2006). According to Janet Saltzman Chafetz, men are deemed manly if they have a healthy interpersonal character that encompasses responsibility, self-reliance, leadership, and domination.

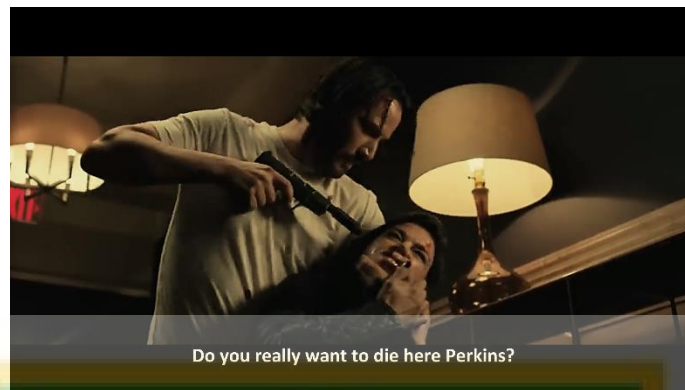


Figure 4.18 John Wick threatening Perkins.

This scene is where John Wick is dominating Perkins by threaten him with a gun and pretend that he wants to kill her after vanquish her. John doing this because he is attacked by Perkins when he wants to sleep in his hotel room, he is saved after gets a warning by Marcus which give him a shoot first to warn John. Moreover, John succeeds make Perkins concede that she was sent by Viggo to kill John in Continental Hotel, so John threatens her to get an information where is Iosef. Furthermore, John which depicted as a dominant male has a superior ability than his opponent (Rowena, C., & Rutherford, J, 2014)

According to Janet Salzman Chafetz, “men are deemed manly if they have a healthy interpersonal character that encompasses responsibility, self-reliance, leadership, and domination.” (Chafetz, 2006). The indication of this masculine concepts can be seen through the interpersonal character with some aspect such as dominant, this trait can be seen in a clear way in these scenes where John where John used his ability to dominating and threaten Perkins. Moreover, this trait was constructed in society where masculine man is expected has a dominance culturally (Connell R. W., 2005)

The influence of John Wick's characteristic on the portrayal of masculinity in this scene is establishing and maintaining the power of a man on portrayal of masculinity, where John Wick present that masculine man is a dominant person while doing a combat (Connell R. W., 1995)

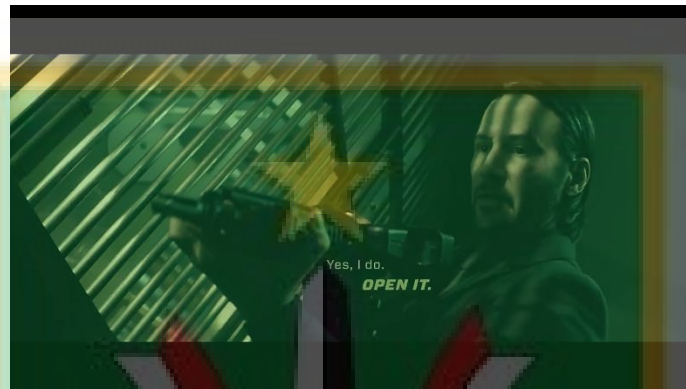


Figure 4.19 John Wick Threatening a pastor.

This scene is where John Wick is where John strikes a church that is made as a storage by Viggo, John known this place from Perkins after he succeed vanquish her. That church is a Viggo storage and John independently conquer that church by killing the guards and dominating the pastor that is responsible to keep Viggo storage in that church. Moreover. the action of John Wick depicted him as a self – reliance and dominant person (Rowena, C., & Rutherford, J, 2014)

According to Janet Salzman Chafetz, “men are deemed manly if they have a healthy interpersonal character that encompasses responsibility, self-reliance, leadership, and domination.” (Chafetz, 2006). The indication of this masculine concepts can be seen through the interpersonal character with several aspect such as dominant and self – reliance, these traits can be seen in a clear way in these scenes where John independently strikes and conquer that church and

threatening the pastor. Moreover, this trait was constructed in society where masculine man is expected has a dominance culturally (Connell R. W., 2005)

The influence of John Wick's characteristic on the portrayal of masculinity in this scene is strengthening assertiveness and dominance power control of a man on portrayal masculinity, where John Wick present that masculine man is always showing an assertive and power when being disturbed. (Levant, R. F., & Pollack, W. S., 1995)

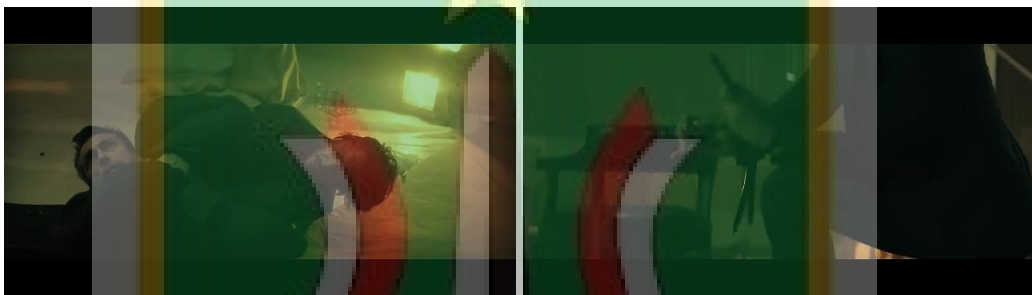


Figure 4.20 John Wick defeated his enemy with tied hand.

This scene is where John Wick battling his enemy with tied hand, when he wants to be executed by Viggo men, John got helped by Marcus that successfully shoot one of that man, and John surprisingly strike another man with his tied hand in dominant and successfully killed that man by a submission. This action depicted John having a superior ability than his opponent (Rowena, C., & Rutherford, J, 2014)

According to Janet Salzman Chafetz, “men are deemed manly if they have a healthy interpersonal character that encompasses responsibility, self-reliance, leadership, and domination.” (Chafetz, 2006). The indication of this masculine concepts can be seen through the interpersonal character with some aspect such as dominant, this trait can be seen in a clear way in these scenes where John

where John used his superior ability to dominating and defeating his opponent. Moreover, this trait was constructed in society where masculine man is expected has a dominance culturally (Connell R. W., 2005)

The influence of John Wick's characteristic on the portrayal of masculinity in this scene is establishing and maintaining the power of a man on portrayal of masculinity, where John Wick present that masculine man is a dominant person while doing a combat (Connell R. W., 1995)

#### 4.2.7 Personal Character

Janet Saltzman Chafetz last Masculine Identity is another personal character that resides within a character. This male personality trait involves ambition, selfishness, morality, dependability, competitiveness, and adventurous (Chafetz, 2006).



Figure 4.21 John Intercept Viggo departure.

This scene is where John Wick intercept Viggo departure after he release himself from Viggo men, John doing this action to get an information of where Iosef location from Viggo which hide his son, Iosef. Moreover, John threaten Viggo to pull the contract murder of him. This action depicted John Wick as



ambitious man, where he is so eager to revenge his resentment by killing Iosef (Mahalik, J. R., Locke, B. D., Ludlow, L. H., Diemer, M. A., Scott, R. P. J., Gottfried, M., & Freitas, G., 2003)

According to Janet Salzman Chafetz, “This male personality trait involves ambition, selfishness, morality, dependability, competitiveness, and adventurous.” (Chafetz, 2006). The indication of this masculine concepts can be seen through the interpersonal character with some aspect such as ambitious, this trait can be seen in a clear way in these scenes where John showing his desire to kill Iosef with intention to get a revenge. Moreover, this trait was constructed in society where masculine man has always qualified as an ambitious person (Mahalik, J. R., Locke, B. D., Ludlow, L. H., Diemer, M. A., Scott, R. P. J., Gottfried, M., & Freitas, G., 2003)

The influence of John Wick's characteristic on the portrayal of masculinity in this scene is validating the masculinity qualification, reinforce the stereotype of a masculinity of a man on masculinity on portrayal masculinity where John Wick present that masculine man is associated with ambitious sign. Furthermore, this characteristic is also contributed to creating a self – esteem to a man (Levant R. F., Masculinity as a Barrier to Men's Use of Social Support: A Lesson for Clinicians, 1996)





Figure 4.22 John sat down beside his friend death body.

This picture is where John Wick visiting his friend Marcus, after reportedly by Viggo that killed him because helping John a couple times before. John feels guilty because he must lose one of his family once again as a payback from Viggo. Consequently, Winston as another old friend and the manager of Continental Hotel gave an information to John that Viggo will get away with helicopter in certain helipad. As a morality and social responsibility of a John Wick, he is pursuing Viggo to avenge the death of Marcus and end this conflict at once (Myers, 2016), The dialogue of this scene can be seen below:

***Marcus: I know what you're thinking Jonathan.***

***Marcus: We live by a code.***

***Marcus: Which is why I'm not the one telling you, that a certain helicopter on a certain helipad is being fueled for a certain someone.***

According to Janet Salzman Chafetz, “This male personality trait involves ambition, selfishness, morality, dependability, competitiveness, and adventurous.” (Chafetz, 2006). The indication of this masculine concepts can be seen through the interpersonal character with some aspect such as morality this trait can be seen in a clear way in these scenes where John avenges Marcus death

as a moral burden redemption. Moreover, this trait was constructed in society where masculine man has always having an ethical code as rules such as empathy, justice, and compassion (Connell R., 2015)

The influence of John Wick's characteristic on the portrayal of masculinity in this scene is embracing morality and ethical behavior of a man on masculinity portrayal where John Wick present that masculine man is upholding morality and ethical code (Connell R., 2015)

