

DAFTAR PUSTAKA

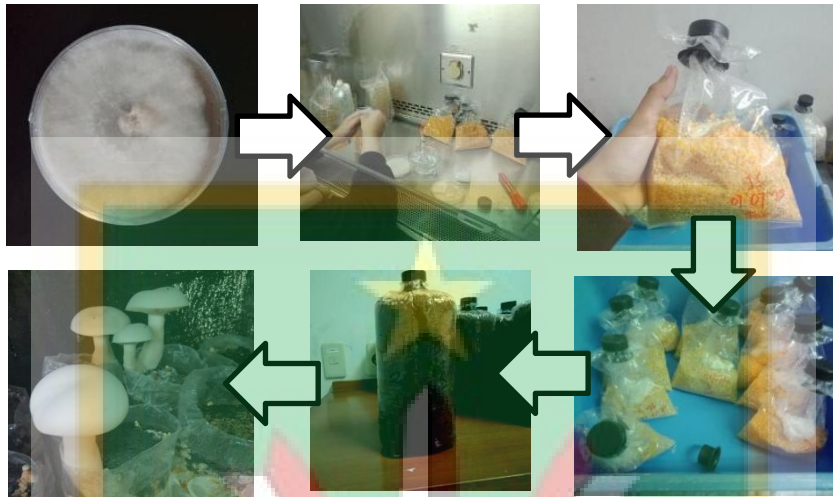
- Achmad MT, Arlianti, Azmi C. 2011. *Panduan lengkap jamur*. Penebar swadaya, Jakarta
- Alam N, Lee J, Lee T. 2010. Mycelial growth conditions and molecular phylogenetic relationships of *Pleurotus ostreatus*. *World Applied Sciences Journal* 9(8): 928-937
- Bhupathi P, Subbaiah KA. 2019. Comparison of colony morphology, sporophore characters and yield performance of wild and cultivated milky mushroom isolates. *J Pure Appl Microbiol.* 13(4) :2405-2419
- Bokaria K, Balsundram SK, Kaphle K. 2014. Commercial production of milky mushroom (*Calocybe indica*). *Merit Research Journal of Agricultural Science and Soil*
- Claverie JM, Notredame C. 2003. *Bioinformatics for dummies*. Wiley Publishing, Indianapolis
- Dhakad PK, Chandra R, Patel SK, *et al.* 2020. Evaluation of suitability of pH on mycelial growth of *Calocybe indica* strains. *Plant Archives* 20 (Special issue): 394-396
- Djarajah NM, Djariyah AS. 2001. *Budi Daya Jamur Tiram*. Penerbit Kanisius, Yogyakarta
- Gharehaghaji AN, Goltapeh EM, Masiha S, *et al.* 2007. Hybrid production of oyster mushroom *Pleurotus ostreatus* (Jacq: Fries) Kummer. *Pakistan journal of biological sciences* 10(14): 2334-2340
- Guo LD, Hyde KD, Liew ECY. 2000. Identification of endophytic fungi from *Livistona chinensis* based on morphology and rDNA sequences. *New Phytologist* 147: 617-630
- Hogg S. 2013. *Essential microbiology, second edition*. Wiley-Blackwell, Oxford
- Hossain SM, Anantharaman N. 2008. Effect of wheat straw powder on enhancement of ligninolytic enzyme activity using *Phanerochate chrysosporium*. *Indian Journal of Biotechnology* 7: 502-507
- Kerketta A, Singh HK, Shukla CS. 2017. Assessment of mycelial growth and yield attribute of *Calocybe indica* P and C. *International Journal of Current Microbiology and Applied Science* 6(12): 1082-1087
- Kothe E. 2001. Mating-type genes for basidiomycete strain improvement in mushroom farming. *Appl Microbiol Biotechnol* 56: 602-612
- Krishnamoorthy AS. 2003. Commercial prospects of milky mushroom (*Calocybe indica*) in the tropical plains of India. In: current vistas in mushroom biology and production. *Mushroom Society of India*: 131-135

- Krishnamoorthy AS, Venkatesh B. 2015. A comprehensive review of tropical milky white mushroom (*Calocybe indica* P&C). *Mycobiology* 43(3): 184-194
- Kumar R, Singh G, Pandey P, *et al.* 2011. Cultural, physiological characteristics and yield attributes of strains of milky mushroom (*Calocybe indica*). *Journal of Mycology and Plant Pathology* 41(1): 67
- Kumara KLW, Edirimanna IC. 2009. Improvement of strains of two oyster mushroom cultivars using duel culture technique. *World Applied Science Journal* 7(5): 654-660
- Larraya LM, Perez G, Iribarren I, *et al.* 2001. Relationship between monokaryotic growth rate and mating type in the edible basidiomycete *Pleurotus ostreatus*. *Applied and Environmental Microbiology* 67: 3385-3390
- Lee BJ, Lee M, Kim YG, *et al.* 2012. Mating relationship between the parent and the mutant strains in *Pleurotus ostreatus*. *Journal of Mushroom* 10(3): 101-108
- Lim. 1998. *Microbiology, 2 nd. edition.* McGraw-Hill Book, New York
- Maheswari S, Chethan K, Chithiraichelvan R. 2018. Cultivation of milky mushroom (*Calocybe indica*) on wood shavings. *Indian Journal of Applied Research* 8(4): 355-366
- McDonnell GE, Sheard D. 2012. *A practical guide to decontamination in healthcare.* John Wiley & Sons
- Moore, Landecker. 1996. *Fundamental of the fungi.* Prentice Hall, New Jersey
- Mufidah AA. 2009. *Kompatibilitas persilangan intra dan inter spesies jamur tiram (Pleurotus sp.).* Doctoral dissertation, Universitas Brawijaya
- Nath M., Barh A, Sharma A, *et al.* 2023. Identification of eight high yielding strains via morpho-molecular characterization of thirty-three wild strains of *Calocybe indica*. *Foods* 12(11): 2119
- Navathe S, Borkar PG, Kadam JJ. 2014. Cultivation of *Calocybe indica* (P & C) in Konkan region of Maharashtra, India. *World Journal of Agricultural Research* 2:187-91
- Pandey M, Lakhanpal TN, Tewari RP. 2000. Studies on spawn production of *Calocybe indica*. *Indian J Mushrooms* 18: 15-8
- Pani BK. 2012. Sporophore production of milky mushroom (*Calocybe indica*) as influenced by depth and time of casing. *International Journal of Advanced Biological Research* 2(1): 168-170
- Pissabarro A. 2000. Molecular tools for breeding basidiomycetes. *Journal International Microbiology* 3(3): 147-152
- Phutela UG, Phutela RP. 2012. Effect of physical and chemical factors on growth of *Calocybe indica* (P & C). *International Journal of Advanced Life Science* 2: 8-16
- Purkayastha RP, Chandra A. 1976. A new technique for in vitro production of *Calocybe indica* an edible mushroom of India. *The Mushroom Journal* 40: 112-113

- Putra, A. 2016. *Budidaya jamur tiram*. Putra Danayu Publisher, Bandung
- Rosnina AG, Yusra Y, Wirda Z. 2022. Perbaikan strain jamur tiram dengan teknik fusi kultur spora tunggal jamur tiram putih dan jamur tiram kelabu. *Jurnal Agrium* 19(2), 168-173
- Shashikant M., Bains A, Chawla P, *et al.* 2022. The current status, bioactivity, food, and pharmaceutical approaches of *Calocybe indica*: A review. *Antioxidants* 11(6): 1145
- Setiawati R. 2021. *Karakterisasi dan uji potensi jamur susu (Calocybe indica) secara in vitro pada media sebagai bahan pengayaan praktikum mikologi*. Doctoral dissertation, Universitas Jambi.
- Singh VP, Singh G, Singh VP, *et al.* 2015. Effect of different temperatures and pH on radial growth of different strains of *Calocybe indica*. *Research Journal of Pharmaceutical, Biological, and Chemical Sciences* 6(5), 1016-1019
- Subbiah KA, Balan V. 2015. A comprehensive review of tropical milky white mushroom (*Calocybe indica* P&C). *Mycobiology* 43(3): 184-194
- Suparti S, Karimawati N. 2017. Pertumbuhan bibit f0 jamur tiram (*Pleurotus ostreatus*) dan jamur merang (*Volvariella volvacea*) pada media umbi talas pada konsentrasi yang berbeda. *Bioeksperimen: Jurnal Penelitian Biologi* 3(1): 64-72
- Thakur MP, Singh HK. 2014. Advances in the cultivation technology of tropical mushrooms in India. *Jawaharlal Nehru Krishi Vishwa Vidyalaya Research Journal* 48(2): 120-135
- Varnesh A. 2007. *Variability among strains of Calocybe indica (P&C)*. Thesis, Govind Ballabh Pant University of Agriculture and Technology, Pantnagar.
- White TJ, Bruns T, Lee SJWT, *et al.* 1990. Amplification and direct sequencing of fungal ribosomal RNA genes for phylogenetics. *PCR protocols: a guide to methods and applications* 18(1), 315-322
- Xu, J. 2016. Fungal DNA barcoding. *NRC Research Press* 59: 913-932
- Yanuati I. 2007. *Kajian Perbedaan komposisi media tanam terhadap pertumbuhan dan hasil jamur tiram putih (Pleurotus florida)*. Universitas Brawijaya, Malang
- Zahid K, Barua S, Haque SMI. 2010. Proximate composition and mineral content of selected edible mushroom varieties of Bangladesh. *Bangladesh Journal of Nutrition* 22: 61-68

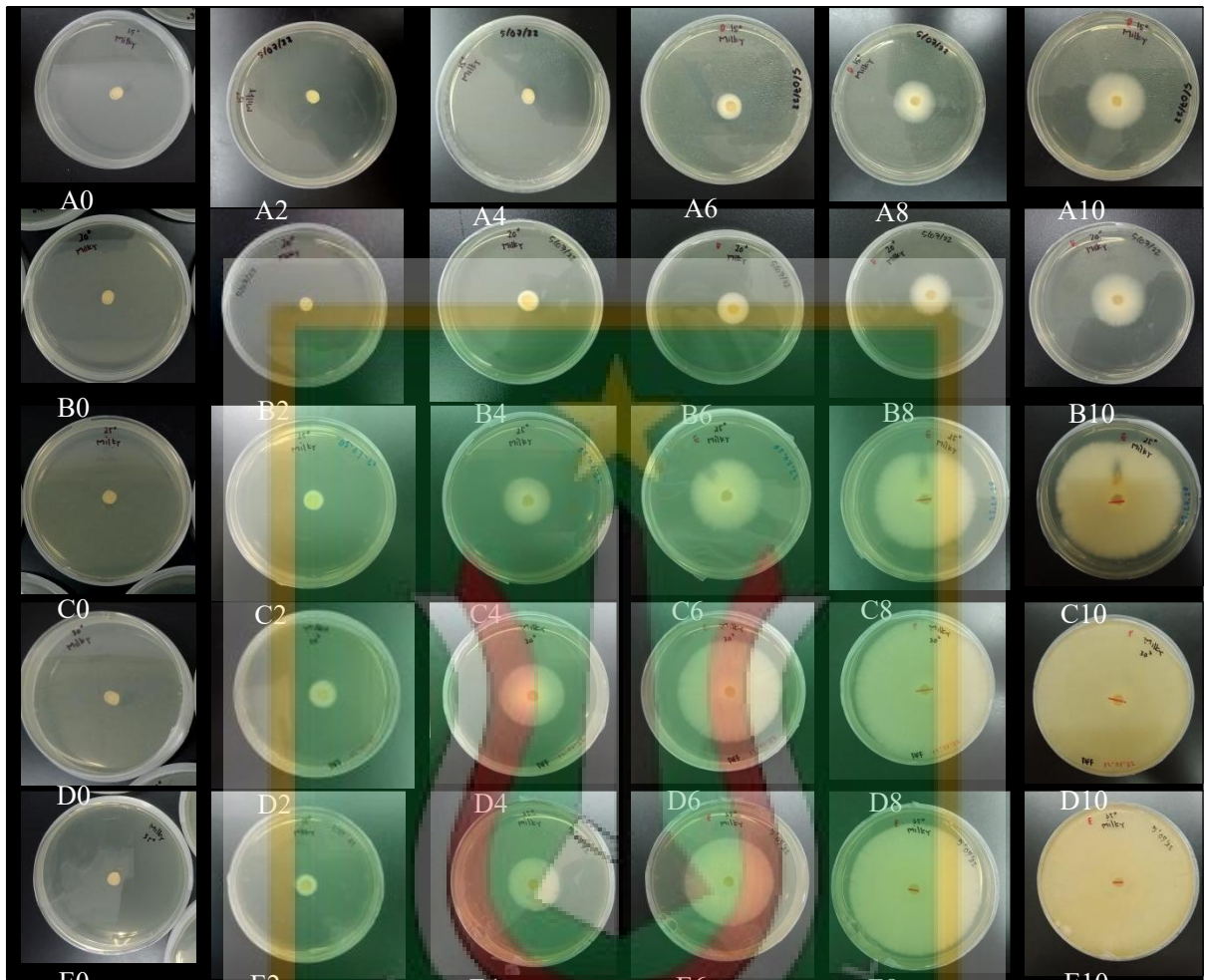


LAMPIRAN I GAMBAR LAMPIRAN

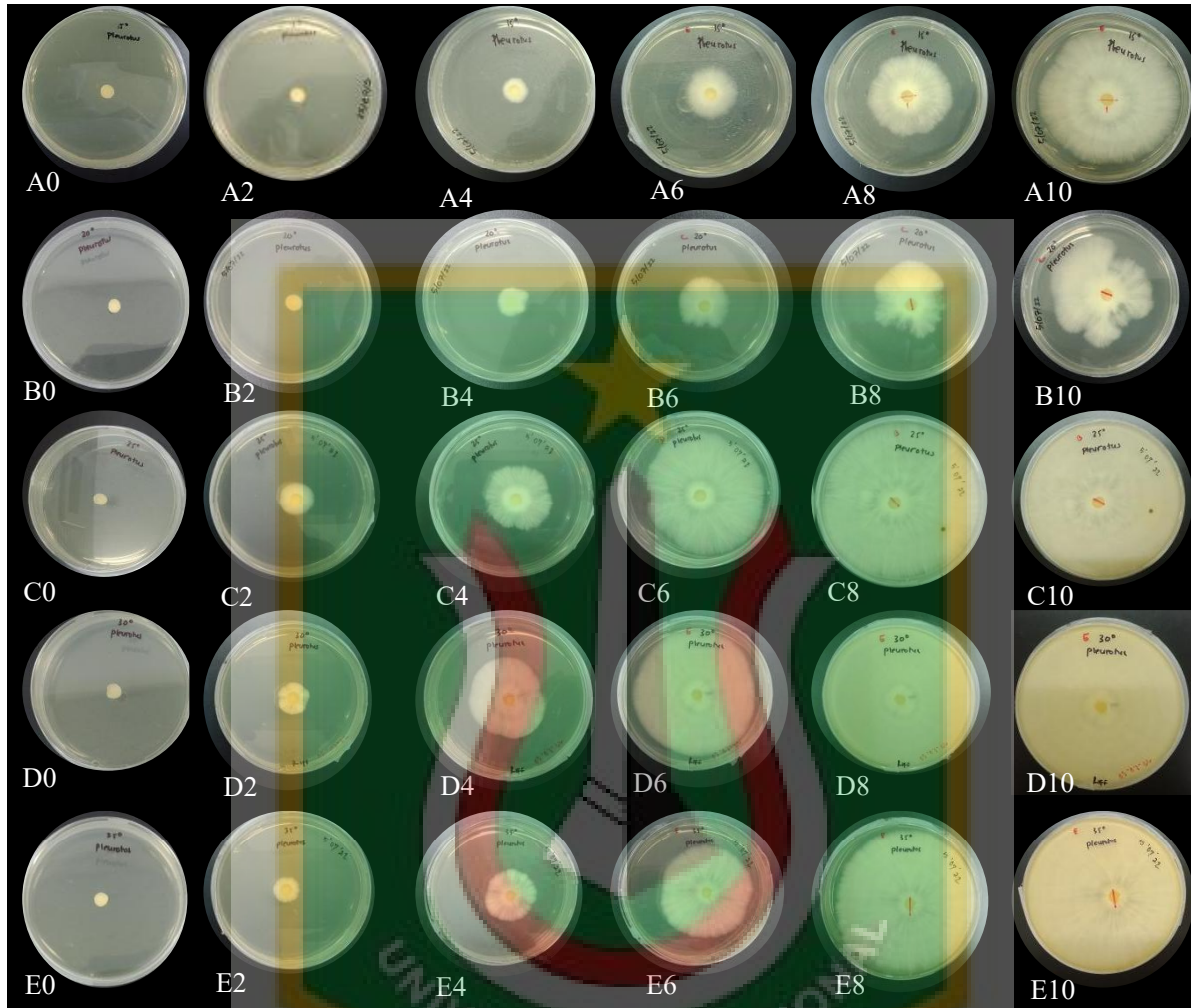


Gambar Lampiran 1. Skema kultivasi *C. indica*

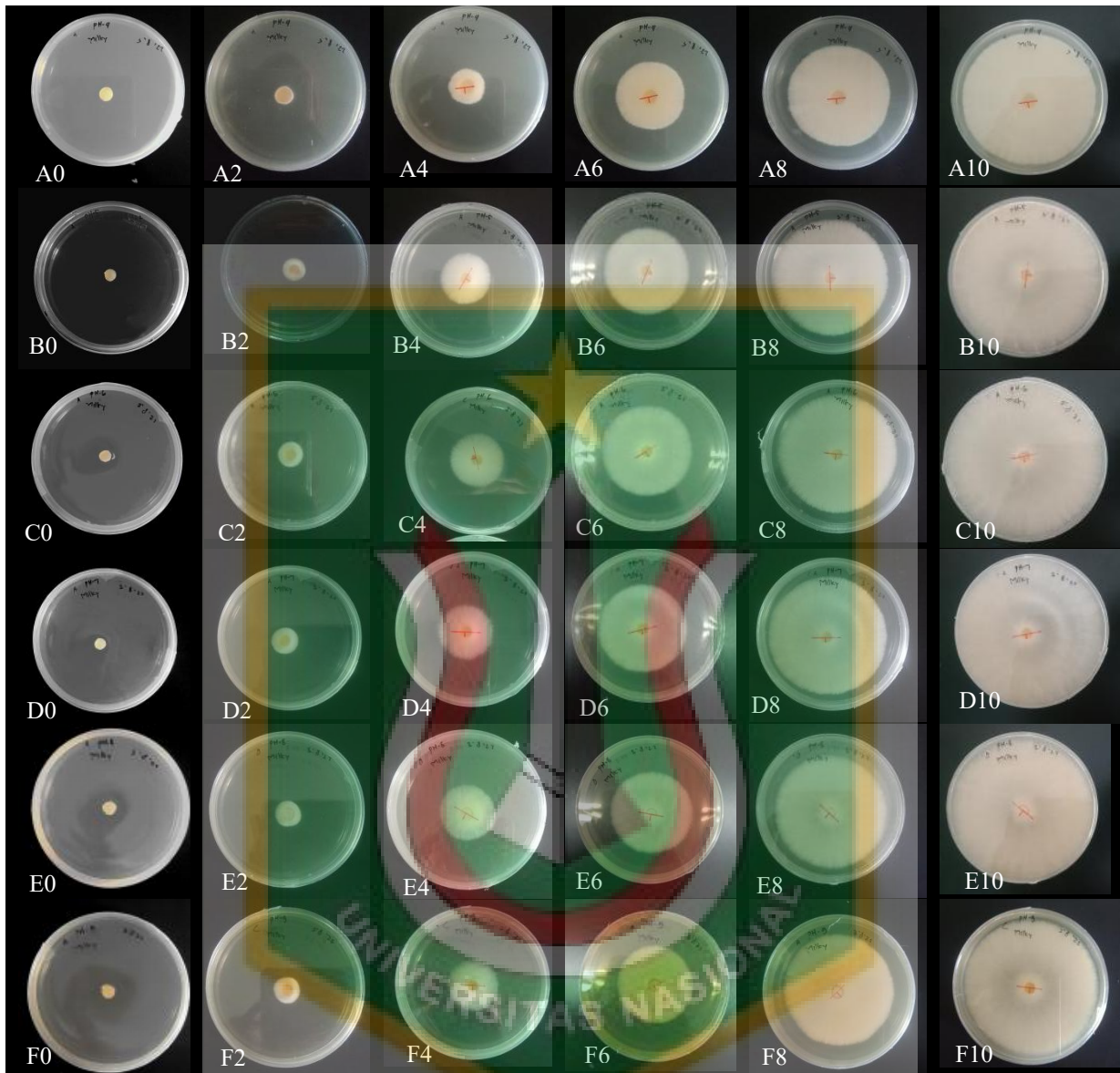




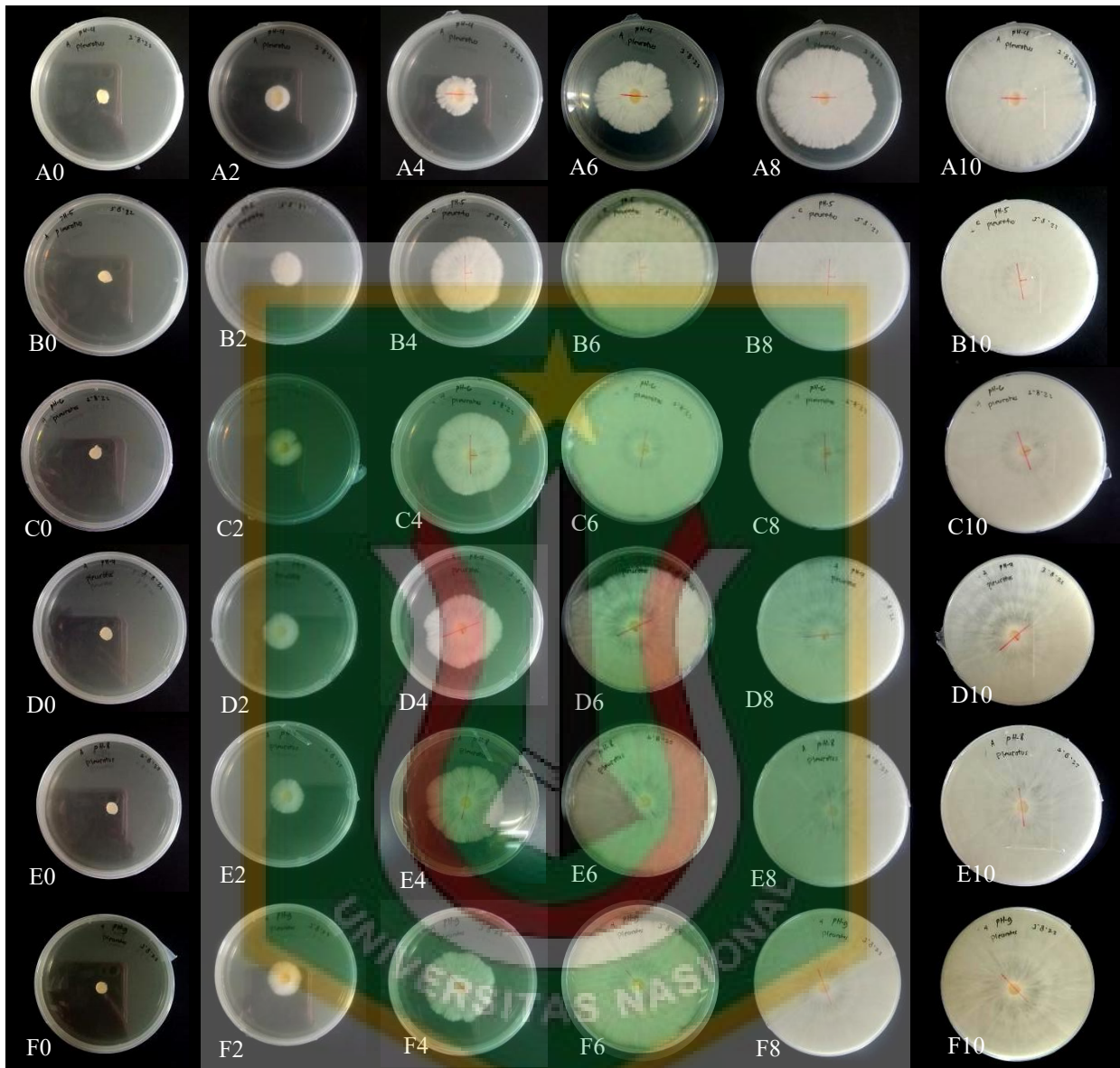
Gambar Lampiran 2. Pertumbuhan miselium *C. indica* pada suhu inkubasi 15°C (A), 20°C (B), 25°C (C), 30°C (D), dan 35°C (E) di hari inkubasi ke- 0 (0), 2 (2), 4 (4), 6 (6), 8(8), dan 10 (10).



Gambar Lampiran 3. Pertumbuhan miselium *P. ostreatus* pada suhu inkubasi 15°C (A), 20°C (B), 25°C (C), 30°C (D), dan 35°C (E) di hari inkubasi ke- 0 (0), 2 (2), 4 (4), 6 (6), 8(8), dan 10 (10).



Gambar Lampiran 4. Pertumbuhan miselium *C. indica* pada medium dengan pH 4 (A), pH 5 (B), pH 6 (C), pH 7 (D), pH 8 (E), dan pH 9 (F), di hari inkubasi ke- 0 (0), 2 (2), 4 (4), 6 (6), 8(8), dan 10 (10).



Gambar Lampiran 5. Pertumbuhan miselium *P. ostreatus* pada medium dengan pH 4 (A), pH 5 (B), pH 6 (C), pH 7 (D), pH 8 (E), dan pH 9 (F), di hari inkubasi ke- 0 (0), 2 (2), 4 (4), 6 (6), 8(8), dan 10 (10).



Gambar Lampiran 6. Uji penentuan pembentukan *clamp connection*

LAMPIRAN II TABEL LAMPIRAN

Tabel Lampiran 1. ANOVA suhu terhadap diameter *C. indica*

		Sum of Squares	df	Mean Square	F	Sig.
Suhu - Diameter Hari ke-2	Between Groups	654.787	4	163.697	127.082	.000
	Within Groups	25.762	20	1.288		
	Total	680.55	24			
Suhu - Diameter Hari ke-4	Between Groups	2213.868	4	553.467	32.522	.000
	Within Groups	340.361	20	17.018		
	Total	2554.229	24			
Suhu - Diameter Hari ke-6	Between Groups	4617.351	4	1154.338	36.155	.000
	Within Groups	638.541	20	31.927		
	Total	5255.892	24			
Suhu - Diameter Hari ke-8	Between Groups	9722.93	4	2430.732	61.203	.000
	Within Groups	794.313	20	39.716		
	Total	10517.243	24			
Suhu - Diameter hari ke-10	Between Groups	15387.882	4	3846.97	132.189	.000
	Within Groups	582.041	20	29.102		
	Total	15969.922	24			

Tabel Lampiran 2. Uji Tukey suhu terhadap diameter *C. indica* hari ke-2

Tukey HSD^a

Suhu	N	Subset for alpha = 0.05		
		1	2	3
Suhu 15	5	.0000		
Suhu 20	5	.0000		
Suhu 25	5		9.0280	
Suhu 35	5		10.7760	10.7760
Suhu 30	5			11.2140
Sig.		1.000	.147	.972

Means for groups in homogeneous subsets are displayed.

a. Uses Harmonic Mean Sample Size = 5.000.

Tabel Lampiran 3. Uji Tukey suhu terhadap diameter *C. indica* hari ke-4

Tukey HSD^a

Suhu	N	Subset for alpha = 0.05		
		1	2	3
Suhu 15	5	.0000		
Suhu 20	5		9.8112	
Suhu 25	5			18.0020
Suhu 30	5			24.3380
Suhu 35	5			24.7660
Sig.		1.000	1.000	.110

Means for groups in homogeneous subsets are displayed.

a. Uses Harmonic Mean Sample Size = 5.000.

Tabel Lampiran 4. Uji Tukey suhu terhadap diameter *C. indica* hari ke-6

Tukey HSD^a

Suhu	N	Subset for alpha = 0.05		
		1	2	3
Suhu 15	5	12.0400		
Suhu 20	5	16.2280		
Suhu 25	5		29.9700	
Suhu 35	5			44.0580
Suhu 30	5			44.6780
Sig.		.767	1.000	1.000

Means for groups in homogeneous subsets are displayed.

a. Uses Harmonic Mean Sample Size = 5.000.

Tabel Lampiran 5. Uji Tukey suhu terhadap diameter *C. indica* hari ke-8

Tukey HSD^a

Suhu	N	Subset for alpha = 0.05		
		1	2	3
Suhu 20	5	20.0360		
Suhu 15	5	20.7200		
Suhu 25	5		45.3740	
Suhu 35	5			63.5300
Suhu 30	5			65.2200
Sig.		1.000	1.000	.993

Means for groups in homogeneous subsets are displayed.

a. Uses Harmonic Mean Sample Size = 5.000.

Tabel Lampiran 6. Uji Tukey suhu terhadap diameter *C. indica* hari ke-10

Tukey HSD^a

Suhu	N	Subset for alpha = 0.05		
		1	2	3
Suhu 20	5	25.5620		
Suhu 15	5	26.3640		
Suhu 25	5		59.7960	
Suhu 35	5			80.8460
Suhu 30	5			81.4600
Sig.		.999	1.000	1.000

Means for groups in homogeneous subsets are displayed.

a. Uses Harmonic Mean Sample Size = 5.000.

Tabel Lampiran 7. ANOVA suhu terhadap diameter *P. ostreatus*

		Sum of Squares	df	Mean Square	F	Sig.
Suhu - Diameter Hari ke-2	Between Groups	926.14	4	231.535	119.776	.000
	Within Groups	38.661	20	1.933		
	Total	964.801	24			
Suhu - Diameter Hari ke-4	Between Groups	1921.601	4	480.4	14.325	.000
	Within Groups	670.693	20	33.535		
	Total	2592.294	24			
Suhu - Diameter Hari ke-6	Between Groups	7117.307	4	1779.327	39.685	.000
	Within Groups	896.721	20	44.836		
	Total	8014.028	24			
Suhu - Diameter Hari ke-8	Between Groups	9982.692	4	2495.673	77.626	.000

	Within Groups	643.001	20	32.15		
	Total	10625.693	24			
Suhu - Diameter hari ke-10	Between Groups	4319.418	4	1079.854	33.319	.000
	Within Groups	648.188	20	32.409		
	Total	4967.606	24			

Tabel Lampiran 8. Uji Tukey suhu terhadap diameter *P. ostreatus* hari ke-2

Tukey HSD^a

Suhu	N	Subset for alpha = 0.05			
		1	2	3	4
Suhu 15	5	.0000			
Suhu 20	5		7.9700		
Suhu 35	5			12.6440	
Suhu 25	5				16.0220
Suhu 30	5				16.2900
Sig.		1.000	1.000	1.000	.998

Means for groups in homogeneous subsets are displayed.

a. Uses Harmonic Mean Sample Size = 5.000.

Tabel Lampiran 9. Uji Tukey suhu terhadap diameter *P. ostreatus* hari ke-4

Tukey HSD^a

Suhu	N	Subset for alpha = 0.05		
		1	2	3
Suhu 15	5	11.5880		
Suhu 20	5	20.5200	20.5200	
Suhu 35	5		27.5820	27.5820
Suhu 25	5			31.9560
Suhu 30	5			36.4560
Sig.		.146	.335	.150

Means for groups in homogeneous subsets are displayed.

a. Uses Harmonic Mean Sample Size = 5.000.

Tabel Lampiran 10. Uji Tukey suhu terhadap diameter *P. ostreatus* hari ke-6

Tukey HSD^a

Suhu	N	Subset for alpha = 0.05		
		1	2	3
Suhu 15	5	26.4460		
Suhu 20	5	27.1180		
Suhu 35	5		48.7720	
Suhu 25	5			62.0220
Suhu 30	5			66.5020
Sig.		1.000	1.000	.825

Means for groups in homogeneous subsets are displayed.

a. Uses Harmonic Mean Sample Size = 5.000.

Tabel Lampiran 11. Uji Tukey suhu terhadap diameter *P. ostreatus* hari ke-8

Tukey HSD^a

Suhu	N	Subset for alpha = 0.05		
		1	2	3
Suhu 20	5	37.2020		
Suhu 15	5	44.4940		
Suhu 35	5		72.4660	
Suhu 25	5			83.5220
Suhu 30	5			85.1360
Sig.		.287	1.000	.991

Means for groups in homogeneous subsets are displayed.

a. Uses Harmonic Mean Sample Size = 5.000.

Tabel Lampiran 12. Uji Tukey suhu terhadap diameter *P. ostreatus* hari ke-10

Tukey HSD^a

Suhu	N	Subset for alpha = 0.05		
		1	2	3
Suhu 20	5	52.2760		
Suhu 15	5		69.5000	
Suhu 35	5			83.7480
Suhu 25	5			86.0000
Suhu 30	5			86.0000
Sig.		1.000	1.000	.969

Means for groups in homogeneous subsets are displayed.

a. Uses Harmonic Mean Sample Size = 5.000.

Tabel Lampiran 13. ANOVA suhu terhadap frekuensi clamp connection *C. indica*

		Sum of Squares	df	Mean Square	F	Sig.
Suhu - Frekuensi Clamp Connection Hari ke-2	Between Groups	187.451	4	46.863	54.914	.000
	Within Groups	8.534	10	0.853		
	Total	195.985	14			
Suhu - Frekuensi Clamp Connection Hari ke-4	Between Groups	350.672	4	87.668	50.881	.000
	Within Groups	17.23	10	1.723		
	Total	367.902	14			
Suhu - Frekuensi Clamp Connection Hari ke-6	Between Groups	1325.175	4	331.294	234.302	.000
	Within Groups	14.14	10	1.414		
	Total	1339.315	14			
Suhu - Frekuensi Clamp Connection Hari ke-8	Between Groups	356.866	4	89.216	75.436	.000
	Within Groups	11.827	10	1.183		
	Total	368.693	14			

Tabel Lampiran 14. Uji Tukey suhu terhadap frekuensi *clamp connection C. indica* hari ke-2

Tukey HSD^a

Suhu	N	Subset for alpha = 0.05	
		1	2
Suhu 15	3	.0000	
Suhu 20	3	.0000	
Suhu 25	3	.0000	
Suhu 35	3		6.1467
Suhu 30	3		8.0700
Sig.		1.000	.155

Means for groups in homogeneous subsets are displayed.

a. Uses Harmonic Mean Sample Size = 3.000.

Tabel Lampiran 15. Uji Tukey suhu terhadap frekuensi *clamp connection C. indica* hari ke-4

Tukey HSD^a

Suhu	N	Subset for alpha = 0.05	
		1	2
Suhu 15	3	.0000	
Suhu 20	3	.0000	
Suhu 35	3		8.4867
Suhu 25	3		9.2900
Suhu 30	3		11.2967
Sig.		1.000	.139

Means for groups in homogeneous subsets are displayed.

a. Uses Harmonic Mean Sample Size = 3.000.

Tabel Lampiran 16. Uji Tukey suhu terhadap frekuensi *clamp connection C. indica* hari ke-6

Tukey HSD^a

Suhu	N	Subset for alpha = 0.05				
		1	2	3	4	5
Suhu 15	3	.0000				
Suhu 20	3		12.1467			
Suhu 35	3			17.8067		
Suhu 25	3				21.5333	
Suhu 30	3					27.7100
Sig.		1.000	1.000	1.000	1.000	1.000

Means for groups in homogeneous subsets are displayed.

a. Uses Harmonic Mean Sample Size = 3.000.

Tabel Lampiran 17. Uji Tukey suhu terhadap frekuensi *clamp connection C. indica* hari ke-8

Tukey HSD^a

Suhu	N	Subset for alpha = 0.05		
		1	2	3
Suhu 15	3	15.3533		
Suhu 20	3	15.6600		
Suhu 35	3		21.4233	
Suhu 25	3		23.5533	
Suhu 30	3			28.2100
Sig.		.996	.193	1.000

Means for groups in homogeneous subsets are displayed.

a. Uses Harmonic Mean Sample Size = 3.000.

Tabel Lampiran 18 . ANOVA suhu terhadap frekuensi *clamp connection P. ostreatus*

		Sum of Squares	df	Mean Square	F	Sig.
Suhu - Frekuensi Clamp Connection Hari ke-2	Between Groups	426.161	4	106.54	71.973	.000
	Within Groups	14.803	10	1.48		
	Total	440.964	14			
Suhu - Frekuensi Clamp Connection Hari ke-4	Between Groups	361.721	4	90.43	111.925	.000
	Within Groups	8.08	10	0.808		
	Total	369.8	14			
Suhu - Frekuensi Clamp Connection Hari ke-6	Between Groups	105.377	4	26.344	15.068	.000
	Within Groups	17.483	10	1.748		
	Total	122.861	14			
Suhu - Frekuensi Clamp Connection Hari ke-8	Between Groups	450.199	4	112.55	122.401	.000
	Within Groups	9.195	10	0.92		
	Total	459.394	14			

Tabel Lampiran 19. Uji Tukey suhu terhadap frekuensi *clamp connection P. ostreatus* hari ke-2

Tukey HSD^a

Suhu	N	Subset for alpha = 0.05		
		1	2	3
Suhu 15	3	.0000		
Suhu 20	3	.0000		
Suhu 30	3		7.6933	
Suhu 35	3		8.6500	
Suhu 25	3			13.7567
Sig.		1.000	.865	1.000

Means for groups in homogeneous subsets are displayed.

a. Uses Harmonic Mean Sample Size = 3.000.

Tabel Lampiran 20. Uji Tukey suhu terhadap frekuensi *clamp connection P. ostreatus* hari ke-4

Tukey HSD^a

Suhu	N	Subset for alpha = 0.05			
		1	2	3	4
Suhu 15	3	11.6033			
Suhu 20	3		15.2900		
Suhu 25	3			19.3067	
Suhu 35	3				22.8800
Suhu 30	3				25.0900
Sig.		1.000	1.000	1.000	.077

Means for groups in homogeneous subsets are displayed.

a. Uses Harmonic Mean Sample Size = 3.000.

Tabel Lampiran 21. Uji Tukey suhu terhadap frekuensi *clamp connection P. ostreatus* hari ke-6

Tukey HSD^a

Suhu	N	Subset for alpha = 0.05		
		1	2	3
Suhu 25	3	22.2633		
Suhu 15	3	22.3100		
Suhu 20	3	22.6967	22.6967	
Suhu 30	3		25.9233	25.9233
Suhu 35	3			28.9800
Sig.		.994	.080	.102

Means for groups in homogeneous subsets are displayed.

a. Uses Harmonic Mean Sample Size = 3.000.

Tabel Lampiran 22. Uji Tukey suhu terhadap frekuensi *clamp connection P. ostreatus* hari ke-8

Tukey HSD^a

Suhu	N	Subset for alpha = 0.05		
		1	2	3
Suhu 15	3	14.5800		
Suhu 25	3		23.0600	
Suhu 20	3		23.1067	
Suhu 30	3			29.0333
Suhu 35	3			29.8600
Sig.		1.000	1.000	.824

Means for groups in homogeneous subsets are displayed.

a. Uses Harmonic Mean Sample Size = 3.000.

Tabel Lampiran 23. ANOVA pH terhadap diameter *C. indica*

		Sum of Squares	df	Mean Square	F	Sig.
pH - Diameter Hari ke-2	Between Groups	157.51	5	31.502	5.68	.003
	Within Groups	99.823	18	5.546		
	Total	257.333	23			
pH - Diameter Hari ke-4	Between Groups	310.873	5	62.175	14.646	.000
	Within Groups	76.412	18	4.245		
	Total	387.285	23			
pH - Diameter Hari ke-6	Between Groups	752.101	5	150.42	10.423	.000
	Within Groups	259.773	18	14.432		
	Total	1011.874	23			
pH - Diameter Hari ke-8	Between Groups	796.745	5	159.349	17.385	.000

	Within Groups	164.983	18	9.166		
	Total	961.728	23			
pH - Diameter hari ke-10	Between Groups	960.017	5	192.003	14.829	.000
	Within Groups	233.062	18	12.948		
	Total	1193.079	23			

Tabel Lampiran 24. Uji Tukey pH terhadap diameter *C. indica* hari ke-2

Tukey HSD^a

pH	N	Subset for alpha = 0.05	
		1	2
pH 4	4	7.0250	
pH 8	4		13.0475
pH 9	4		13.3425
pH 5	4		13.6625
pH 6	4		14.0075
pH 7	4		14.7075
Sig.		1.000	.913

Means for groups in homogeneous subsets are displayed.

a. Uses Harmonic Mean Sample Size = 4.000.

Tabel Lampiran 25. Uji Tukey pH terhadap diameter *C. indica* hari ke-4

Tukey HSD^a

pH	N	Subset for alpha = 0.05	
		1	2
pH 4	4	18.3375	
pH 9	4		25.6475
pH 8	4		26.9050
pH 7	4		27.4875
pH 5	4		28.5375
pH 6	4		29.0675
Sig.		1.000	.226

Means for groups in homogeneous subsets are displayed.

a. Uses Harmonic Mean Sample Size = 4.000.

Tabel Lampiran 26. Uji Tukey pH terhadap diameter *C. indica* hari ke-6

Tukey HSD^a

pH	N	Subset for alpha = 0.05	
		1	2
pH 4	4	32.7200	
pH 8	4		45.4575
pH 9	4		45.6600
pH 7	4		46.9925
pH 5	4		48.4000
pH 6	4		49.6125
Sig.		1.000	.641

Means for groups in homogeneous subsets are displayed.

a. Uses Harmonic Mean Sample Size = 4.000.

Tabel Lampiran 27. Uji Tukey pH terhadap diameter *C. indica* hari ke-8

Tukey HSD^a

pH	N	Subset for alpha = 0.05		
		1	2	3
pH 4	4	51.3000		
pH 9	4		61.0475	
pH 8	4		63.3650	63.3650
pH 7	4		64.5500	64.5500
pH 5	4			68.0200
pH 6	4			68.5650
Sig.		1.000	.587	.198

Means for groups in homogeneous subsets are displayed.

a. Uses Harmonic Mean Sample Size = 4.000.

Tabel Lampiran 28. Uji Tukey pH terhadap diameter *C. indica* hari ke-10

Tukey HSD^a

pH	N	Subset for alpha = 0.05	
		1	2
pH 4	4	64.7025	
pH 9	4		75.8950
pH 8	4		78.5850
pH 7	4		81.0150
pH 5	4		82.2625
pH 6	4		83.6350
Sig.		1.000	.065

Means for groups in homogeneous subsets are displayed.

a. Uses Harmonic Mean Sample Size = 4.000.

Tabel Lampiran 29. ANOVA pH terhadap diameter *P. ostreatus*

		Sum of Squares	df	Mean Square	F	Sig.
pH - Diameter Hari ke-2	Between Groups	81.982	5	16.396	3.179	.031
	Within Groups	92.829	18	5.157		
	Total	174.811	23			
pH - Diameter Hari ke-4	Between Groups	1410.448	5	282.09	8.144	.000
	Within Groups	623.501	18	34.639		
	Total	2033.948	23			
pH - Diameter Hari ke-6	Between Groups	4088.982	5	817.796	12.881	.000
	Within Groups	1142.814	18	63.49		
	Total	5231.796	23			
pH - Diameter Hari ke-8	Between Groups	2042.612	5	408.522	13.732	.000
	Within Groups	535.501	18	29.75		
	Total	2578.113	23			
pH - Diameter hari ke-10	Between Groups	483.406	5	96.681	1.989	.129
	Within Groups	874.849	18	48.603		
	Total	1358.255	23			

Tabel Lampiran 30. Uji Tukey pH terhadap diameter *P. ostreatus* hari ke-2

Tukey HSD^a

pH	N	Subset for alpha = 0.05	
		1	2
pH 4	4	16.0400	
pH 5	4	18.2375	18.2375
pH 6	4	18.9325	18.9325
pH 9	4	20.3475	20.3475
pH 8	4	20.7625	20.7625
pH 7	4		21.6175
Sig.		.079	.328

Means for groups in homogeneous subsets are displayed.

a. Uses Harmonic Mean Sample Size = 4.000.

Tabel Lampiran 31. Uji Tukey pH terhadap diameter *P. ostreatus* hari ke-4

Tukey HSD^a

pH	N	Subset for alpha = 0.05	
		1	2
pH 4	4	25.1950	
pH 5	4	35.9975	35.9975
pH 6	4		39.3850
pH 9	4		44.3950
pH 8	4		45.7925
pH 7	4		48.0250
Sig.		.149	.087

Means for groups in homogeneous subsets are displayed.

a. Uses Harmonic Mean Sample Size = 4.000.

Tabel Lampiran 32. Uji Tukey pH terhadap diameter *P. ostreatus* hari ke-6

Tukey HSD^a

pH	N	Subset for alpha = 0.05	
		1	2
pH 4	4	43.8800	
pH 5	4		67.4800
pH 6	4		73.2600
pH 9	4		79.0625
pH 8	4		80.0425
pH 7	4		82.0675
Sig.		1.000	.151

Means for groups in homogeneous subsets are displayed.

a. Uses Harmonic Mean Sample Size = 4.000.

Tabel Lampiran 33. Uji Tukey pH terhadap diameter *P. ostreatus* hari ke-8

Tukey HSD^a

pH	N	Subset for alpha = 0.05	
		1	2
pH 4	4	60.6625	
pH 5	4		83.3925
pH 6	4		85.0650
pH 7	4		86.0000
pH 8	4		86.0000
pH 9	4		86.0000
Sig.		1.000	.982

Means for groups in homogeneous subsets are displayed.

a. Uses Harmonic Mean Sample Size = 4.000.

Tabel Lampiran 34. ANOVA pH terhadap frekuensi *clamp connection C. indica*

		Sum of Squares	df	Mean Square	F	Sig.
pH - Frekuensi Clamp Connection Hari ke-2	Between Groups	185.447	5	37.089	84.722	.000
	Within Groups	5.253	12	0.438		
	Total	190.7	17			
pH - Frekuensi Clamp Connection Hari ke-4	Between Groups	105.885	5	21.177	20.553	.000
	Within Groups	12.365	12	1.03		
	Total	118.249	17			
pH - Frekuensi Clamp Connection Hari ke-6	Between Groups	41.718	5	8.344	2.668	.076
	Within Groups	37.529	12	3.127		
	Total	79.247	17			
pH - Frekuensi Clamp Connection Hari ke-8	Between Groups	229.171	5	45.834	36.118	.000
	Within Groups	15.228	12	1.269		
	Total	244.399	17			

Tabel Lampiran 35. Uji Tukey pH terhadap frekuensi *clamp connection C. indica* hari ke-2

Tukey HSD^a

pH	N	Subset for alpha = 0.05		
		1	2	3
pH 4	3	.0000		
pH 6	3	.0000		
pH 8	3	.0000		
pH 9	3	.0000		
pH 5	3		5.2333	
pH 7	3			7.9667
Sig.		1.000	1.000	1.000

Means for groups in homogeneous subsets are displayed.

a. Uses Harmonic Mean Sample Size = 3.000.

Tabel Lampiran 36. Uji Tukey pH terhadap frekuensi *clamp connection C. indica* hari ke-8
Tukey HSD^a

pH	N	Subset for alpha = 0.05		
		1	2	3
pH 7	3	8.2000		
pH 4	3	8.5033	8.5033	
pH 5	3	9.1133	9.1133	
pH 8	3	10.0733	10.0733	
pH 9	3		11.1700	
pH 6	3			15.3500
Sig.		.281	.063	1.000

Means for groups in homogeneous subsets are displayed.
a. Uses Harmonic Mean Sample Size = 3.000.

Tabel Lampiran 37. Uji Tukey pH terhadap frekuensi *clamp connection C. indica* hari ke-8
Tukey HSD^a

pH	N	Subset for alpha = 0.05	
		1	2
pH 9	3	14.1733	
pH 8	3	15.4333	
pH 7	3	16.7000	
pH 4	3	16.9167	
pH 5	3	17.0933	
pH 6	3		25.2433
Sig.		.068	1.000

Means for groups in homogeneous subsets are displayed.
a. Uses Harmonic Mean Sample Size = 3.000.

Tabel Lampiran 38. ANOVA pH terhadap frekuensi *clamp connection P. ostreatus*

		Sum of Squares	df	Mean Square	F	Sig.
pH - Frekuensi Clamp Connection Hari ke -2	Between Groups	625.060	5	125.012	100.824	.000
	Within Groups	14.879	12	1.240		
	Total	639.939	17			
pH - Frekuensi Clamp Connection Hari ke -4	Between Groups	456.917	5	91.383	63.139	.000
	Within Groups	17.368	12	1.447		
	Total	474.285	17			
pH - Frekuensi Clamp Connection Hari ke -6	Between Groups	76.880	5	15.376	6.423	.004
	Within Groups	28.729	12	2.394		
	Total	105.609	17			
pH - Frekuensi Clamp Connection Hari ke -8	Between Groups	91.275	5	18.255	14.486	.000
	Within Groups	15.122	12	1.260		
	Total	106.398	17			

Tabel Lampiran 39. Uji Tukey pH terhadap frekuensi clamp connection *P. ostreatus* hari ke-2

Tukey HSD^a

pH	N	Subset for alpha = 0.05		
		1	2	3
pH 4	3	.0000		
pH 9	3	.0000		
pH 8	3		8.1133	
pH 7	3			11.8333
pH 6	3			13.7300
pH 5	3			13.7333
Sig.		1.000	1.000	.353

Means for groups in homogeneous subsets are displayed.

a. Uses Harmonic Mean Sample Size = 3.000.

Tabel Lampiran 40. Uji Tukey pH terhadap frekuensi clamp connection *P. ostreatus* hari ke-4

Tukey HSD^a

pH	N	Subset for alpha = 0.05			
		1	2	3	4
pH 4	3	11.5233			
pH 9	3	12.8567			
pH 8	3	12.8767			
pH 7	3		16.1867		
pH 6	3			20.0467	
pH 5	3				25.9067
Sig.		.739	1.000	1.000	1.000

Means for groups in homogeneous subsets are displayed.

a. Uses Harmonic Mean Sample Size = 3.000.

Tabel Lampiran 41. Uji Tukey pH terhadap frekuensi clamp connection *P. ostreatus* hari ke-6

Tukey HSD^a

pH	N	Subset for alpha = 0.05		
		1	2	3
pH 8	3	15.4800		
pH 4	3	16.2767	16.2767	
pH 5	3	16.5767	16.5767	
pH 6	3	17.4433	17.4433	17.4433
pH 7	3		20.3233	20.3233
pH 9	3			20.9533
Sig.		.640	.065	.129

Means for groups in homogeneous subsets are displayed.

a. Uses Harmonic Mean Sample Size = 3.000.

Tabel Lampiran 42. Uji Tukey pH terhadap frekuensi *clamp connection P. ostreatus* hari ke-8

Tukey HSD^a

pH	N	Subset for alpha = 0.05	
		1	2
pH 4	3	15.3500	
pH 5	3	15.9167	
pH 8	3		19.4400
pH 9	3		19.8367
pH 6	3		20.0267
pH 7	3		21.5033
Sig.		.987	.284

Means for groups in homogeneous subsets are displayed.
 a. Uses Harmonic Mean Sample Size = 3.000.



Optimalisasi Pertumbuhan Miselium Terkait Pembentukan Clamp Connection dan Identifikasi Molekular Pada Jamur *Calocybe indica*

ORIGINALITY REPORT

9%

SIMILARITY INDEX

9%

INTERNET SOURCES

5%

PUBLICATIONS

4%

STUDENT PAPERS

PRIMARY SOURCES

1	etheses.uin-malang.ac.id Internet Source	1%
2	repository.ub.ac.id Internet Source	1%
3	Submitted to Higher Education Commission Pakistan Student Paper	1%
4	e-journal.upp.ac.id Internet Source	1%
5	idoc.pub Internet Source	1%
6	Submitted to UIN Maulana Malik Ibrahim Malang Student Paper	1%
7	adoc.pub Internet Source	1%

8	Rohmi Rohmi, Zainal Fikri, Ni Ketut Riska Pujasari. "Ubi Jalar Putih (Ipomoea Batatas L.) Media Alternatif Pertumbuhan Aspergillus Niger", Jurnal Kesehatan Prima, 2019	<1 %
9	repository.unsil.ac.id Internet Source	<1 %
10	mapress.com Internet Source	<1 %
11	Efri ., Titik Nur Aeny, Tri Maryono, Eko Ronalddi. "PENGARUH FRAKSI EKSTRAK DAUN PACAR CINA (AGLAIA ODORATA L.) TERHADAP PERTUMBUHAN COLLETOTRICHUM CAPSICI PENYEBAB PENYAKIT ANTRAKNOSA PADA CABAI (CAPSICUM ANNUUM L.) SECARA IN VITRO", JURNAL HAMA DAN PENYAKIT TUMBUHAN TROPIKA, 2017 Publication	<1 %
12	id.scribd.com Internet Source	<1 %
13	eprints.mercubuana-yogya.ac.id Internet Source	<1 %
14	Submitted to Universitas Nasional Student Paper	<1 %
15	semirata2017.mipa.unja.ac.id Internet Source	<1 %

16

Isnani Nurhayati, Anas Rahmad Hidayat.
"identifikasi perkembangan balita dengan
metode kpsp terhadap status gizi balita di
boyolali", Jurnal Formil (Forum Ilmiah) Kesmas
Respati, 2019

Publication

<1 %

17

doaj.org
Internet Source

<1 %

Exclude quotes On

Exclude bibliography On

Exclude matches < 17 words

