

aRtxmtrAeb ef vbrAewAntbr tbn  
vbrAnAti rAo vorARArAes fced I  
n u tS n Ec)eam)oh eniint u  
*by* Ernawati Sinaga

---

**Submission date:** 09-Feb-2021 11:25AM (UTC+0700)

**Submission ID:** 1505150019

**File name:** B7-Vivit-erna-seaweed-2019.pdf (3.17M)

**Word count:** 10953

**Character count:** 44438

## Evaluation of Antioxidant and Antidiabetic Activities from Red Seaweed (*Euचेuma cottonii*)

Vivitri Dewi Prasasty<sup>1</sup>, Benedicta Haryani<sup>1</sup>, Rory Anthony Hutagalung<sup>1</sup>, Noryawati Mulyono<sup>1</sup>, Fatmawati Yazid<sup>2</sup>, Rosmalena Rosmalena<sup>2</sup>, Ernawati Sinaga<sup>3</sup>

<sup>1</sup>Faculty of Biotechnology, Atma Jaya Catholic University of Indonesia, Jakarta 12930, Indonesia.

<sup>2</sup>Department of Medical Chemistry, Faculty of Medicine, Universitas Indonesia, Jakarta 10430, Indonesia.

<sup>3</sup>Faculty of Biology, Universitas Nasional, Jakarta 12520, Indonesia.

Article History: Submitted: 20.02.2019

Revised: 16.04.2019

Accepted: 14.05.2019

### ABSTRACT

Diabetes mellitus is a chronic disorder of metabolic characterized by high blood sugar levels (hyperglycemia) and glucose secretion in urine caused by lack of insulin. Hyperglycemia can cause free radical molecules formation, which can be stabilized by antioxidants. Antioxidants can be found in seaweed (e.g. red seaweed, i.e. *Euचेumacottonii*), which is available in large quantities in Indonesia. The purpose of this research is to determine the antioxidant and antidiabetic activities of *E.cottonii* extract in vitro and in vivo. Different solvents such as ethanol, distilled water, and warm distilled water were used for extraction. The extracts were subjected to phenolic screening, bioactive compound identification by GC-MS, antioxidant analysis using DPPH, and  $\alpha$ -amylase activity assay in vitro and in vivo. The highest yield was obtained from warm distilled water solvent (6.8%). The phytochemical content of *E. cottonii* crude extract included alkaloid, terpenoid, phenolic, flavonoid, and saponin. The highest percent inhibition on DPPH free radical scavenging and  $\alpha$ -amylase used ethanol

solvent (34.27%) and (59.33%), respectively. Male *Mus musculus* L. mice was used as an animal model in antidiabetic in vivo assay. Warm distilled water and ethanolic extract of *E.cottonii* had the ability to decrease BGL in diabetic mice by 52.100 mg/dL. Therefore, it can be concluded that the extract of red seaweed *E.cottonii* has the potential as an antioxidant and antidiabetic agent.

**Keywords:** antioxidant, antidiabetic, *E.cottonii*,  $\alpha$ -amylase, DPPH, phytochemical screening

### Correspondence:

26. Ernawati Sinaga  
Faculty of Biology, Universitas Nasional  
Jl. Sawo Manila No. 61, Pasar Minggu, Jakarta 12520, Indonesia  
Email: ernawati.sinaga@civitas.unas.ac.id  
DOI: 10.5530/srp.2019.1.44

© Advanced Scientific Research. All rights reserved

### INTRODUCTION

The prevalence of diabetes mellitus (DM) worldwide in 2010 will increase ten-fold by 2030, where 143 million of them are women and 142 million are men (1). According to the World Health Organization (WHO), DM is the most lethal disease in Southeast Asia. DM is a chronic metabolic disorder characterized by high blood sugar levels (hyperglycemia) and glucose secretion in urine due to disruption of production, secretion or resistance to insulin (1). Sarianet *al.* (2017) reported that antioxidant plays important role in the alleviation of DM (2).

As an archipelago country which is rich in natural resources, Indonesia has increased the use of natural materials as a large source of antioxidant. Beside its affordable price, the use of natural materials as an antioxidant also have smaller side effects compared to antioxidant derived from chemical materials (3). Seaweed is one type of natural material that is often used as a source of antioxidant.

Red seaweed, i.e. *E. cottonii*, also known as *Kappaphycus alvarezii*, is potential to be used as an antioxidant and quite good antidiabetic activity in vitro (4). The presence of phenolics, flavonoids, saponins, terpenoids, and alkaloids may contribute to the antioxidant and antidiabetic activity of *K. alvarezii* (5, 6).

Studies have demonstrated that bioactive compound from *E. cottonii* crude extract and fastly lower blood glucose level (BGL) of white Wistar rats (7). Many researches were conducted on antioxidant activities of red seaweeds (8).

However, the studies of *Euचेuma* sp on the antioxidant and antidiabetic properties in vitro and in vivo have not been conducted, which can be used as an alternative to natural medicine. Therefore, the objective of this study was to evaluate the antioxidant and antidiabetic activities of *E. cottonii* dry extracts in vitro and in vivo.

### MATERIALS AND METHODS

#### Materials and Equipment

Materials used for this research were dried red seaweed *E. cottonii* from Makassar (South Sulawesi, Indonesia), ethanol, chloroform, distilled water, FeCl<sub>3</sub>, HCl 2 N, H<sub>2</sub>SO<sub>4</sub>, chloroform, methanol, Mayer reagent (Potassium Mercuric Iodide), Liebermann-Burchard reagent (acetic acid anhydride : concentrated H<sub>2</sub>SO<sub>4</sub> ratio 1:1), 3,5-dinitrosalicylic acid (DNS), starch, Dragendorff reagent (solution of Potassium Bismuth Iodide), sucrose, DPPH, ascorbic acid, alloxantetrahydrate, and mice (*Mus musculus* L.). Equipment used for this research were glassware, vacuum oven, microplate reader, Gas Chromatography - Mass Spectrometer (GC-MS), rotary evaporator, and glucometer.

#### *E. cottonii* Sample Preparation

Sample was cleaned from sands and rocks with distilled water. After that, sample was dried using vacuum oven at 37°C for 3-4 days. Next, the dried sample was mashed to powder and ready to be used in the next step.

## Phytochemical Screening

### Alkaloids Test

Approximately 0.5 g extract of sample and 5 mL of ethanol were added into test tube. After that, filtrates were divided into 2 test tubes. Filtrate in tube 1 was treated with Dragendorff's reagent and tube 2 with Mayer's reagent. Formation of orange precipitate in tube 1 (9) and white precipitate in tube 2 (10) indicated the presence of alkaloids.

### Triterpenoid and Steroids Test

Approximately 0.5 g of sample and 5 mL of chloroform were added into test tube. Filtrate was treated with Liebermann-Burchard's reagent. Formation of violet color indicated the presence of triterpenoid, while green or blue color indicated the presence of steroid (10).

### Phenolics Test

Approximately 0.5 g extract of sample and 5 mL of ethanol were added into test tube. Filtrate was treated with 3-5 drops of FeCl<sub>3</sub> solution. Formation of blue color indicated the presence of phenols (11).

### Flavonoids Test

Approximately 0.5 g extract of sample and 5 mL ethanol were added into test tube. Filtrate was treated with 1 mL of NaOH solution and 3-5 drops of HCl. Formation of yellow color change into clear indicated the presence of flavonoids (10).

### Saponins Test

Approximately 0.5 g extract of sample in test tube was shaken with 5 mL of distilled water. If foam produced persisted for ten minutes, which did not disappear after HCl was added, it indicated the presence of saponins (9).

### Extraction of Bioactive Compounds from *E. cottonii*

The method of extraction was done using maceration method with 3 solvents such as ethanol, distilled water, and warm distilled water. *E. cottonii* seaweed was mashed into small pieces with food processor and then inserted into Erlenmeyer. The solvent was added with the ratio 1:5 (w/v) for ethanol and 1:10 (w/v) for distilled water and warm distilled water (50°C). Sample was macerated with solvent, then covered with plastic wrap and wrapped in aluminum foil. Sample was macerated overnight. The obtained extract solution was filtered with Whatman filter paper to separate the filtrate and the residue (12).

### Antioxidant Activity with DPPH (1, 1-Diphenyl-2-picrylhydrazyl) Radical Scavenging Assay

Antioxidant activity of *E. cottonii* sample was measured with various concentration such as 1000, 500, 250, and 125 ppm. Approximately 50 microliter of *E. cottonii* extract was added with 50 microliter of the ethanol and pipetted into microplate. Approximately 80 microliter of DPPH 0.1 mM was added into microplate. Solution in the microplate was incubated in dark room with room temperature at 30 min. to optimize the reaction and read with microplate reader at 517 nm wavelength (13). Blank used is 50 microliter methanol and 80 microliter DPPH 0.01 mM which pipetted into microplate.

Ascorbic acid was used as positive control (14). The percentage inhibition of antioxidant activity was calculated by following the formula:

$$\% \text{ Inhibition} = \frac{\text{abs. positive control} - \text{abs. sample}}{\text{abs. positive control}} \times 100\%$$

### Alpha-Amylase Activity Assay

*E. cottonii* extract was diluted using buffer phosphate with various concentration as follow 1000, 500, 250, and 125 ppm, respectively. *E. cottonii* extract and alpha-amylase (1:1) were added to microplate and incubated at 25 °C for 10 mins. Approximately 250 microliter of starch 1% in 0.02 M buffer phosphate (pH 6.9) was added to the mixture and incubated at 25 °C for 10 mins. Approximately 500 pL of DNS added into microplate and vial tubes were heated 10 minutes and chilled at room temperature for around 5 minutes. DNS function is to stop the reaction between sample and enzyme. Approximately 150 pL mixture of enzyme and sample were added to microplate well and read with microplate reader at 540 nm wavelength (15). The percentage inhibition of alpha-amylase activity was calculated by following formula below:

$$\% \text{ Inhibition} = \frac{\text{abs. positive control} - \text{abs. sample}}{\text{abs. positive control}} \times 100\%$$

### GC-MS Analysis

GC-MS analysis was performed with Thermo Scientific Single Quadrupole 5050A mass spectrometer coupled with Thermo Scientific Gas Chromatography and fitted with Ultra Alloy+ 5 capillary column (30 m length x 0.25 mm i.d., 0.25 µm film thickness). Helium was used as carrier gas at flow rate 1 mL/min. Oven temperature was set from 50 °C to 280 °C and held for 5 minutes at 280 °C. Interface temperature was kept at 250 °C. Ionization mode was set electron impact ionization with the range of analysis was 40-400 amu. The interval time of mass spectra was obtained at 0.5 second. The results were compared with library compounds presented in National Institute Standard and Technology (NIST) database (16).

### Reduction of Blood Glucose Level (BGL) in Vivo Assay Animals

Healthy male white mice (*Mus musculus* L.) (with body weight were body weight 25-30 g) at the age 2-3 months old were obtained from Department of Nutrition, Faculty of Medicine, Universitas Indonesia, Jakarta were used in this research. The mice were maintained under standard conditions in the cage at room temperature (± 25°C), humidity (±60%), and normal photo period (12 h dark/12 h light) for the experiment. The mice were acclimatized to the cage conditions three days prior to experiment (17).

### Experimental Protocol

The mice were divided into six groups of five rats in each group (Table 1). The groups were blank, negative control, ethanol extract (EE), distilled water extract (DWE), and warm distilled water extract (WDWE) (18).

**Table 1. Experimental design of the study**

Group	Mice Model	Treatment
Blank	Normal	Untreated mice, normal mice were given water and normal pellet
Negative Control	Diabetes	Diabetic mice were given distilled water and normal pellet
Positive Control	Diabetes	Diabetes mice were given acarbose, distilled water and normal pellet
EE	Diabetes	Diabetic mice were given ethanol extract of <i>E. cottonii</i> , distilled water and normal pellet
DWE	Diabetes	Diabetic mice were given distilled water extract of <i>E. cottonii</i> , distilled water and normal pellet
WDWE	Diabetes	Diabetic mice were given warm distilled water extract of <i>E. cottonii</i> , distilled water and normal pellet

\*Ethanol extract (EE), distilled water extract (DWE), warm distilled water extract (WDWE)

#### Optimization of Diabetic Level

The optimization of diabetic level in mice was administered by 21 mice *Mus musculus* L. (n=21). The assay was done twice. First, assay was divided into 3 groups which consist of three mice. All mice were fasted 8 h (water given) and then the BGL of mice were measured by glucometer. In each group of mice was injected by alloxan tetrahydrate with different concentrations (50, 60, and 100 mg/kg BW) via intraperitoneal route. Each group of mice was given 5% sucrose after injection. On day 3, BGL was measured and the result with BGL <126 mg/dL, were not considered as diabetes. Second, assay was divided into 3 groups which consist of four mice. In each group of mice was injected by alloxan tetrahydrate with different concentrations (100, 150, and 200 mg/kg BW) via intraperitoneal route. On day 3, BGL was measured and the result with BGL >126 mg/dL were observed as diabetes. The mice which were given 100 mg/kg BW showed the highest BGL (184 mg/dL) without showing any side effects. Alloxan tetrahydrate with 100 mg/kg BW was chosen for diabetes induction method (18, 19).

#### Induction of Diabetes

Diabetes induction was carried out for 3 days. All mice were fasted within 8 hours and then BGL of mice were measured by glucometer on day-0 and day 3 at 09.00 am. Blood samples of mice were taken via capillary route and tested using glucometer. Then, 100 mg/kg BW alloxan tetrahydrate was taken 0.2 mL and diluted in sterile double distilled water. Alloxan was injected in intraperitoneal route for 3 days. During the induction, mice were given 10% sucrose solution

and normal pellet. On the day 3 day sampling, mice with BGL >126 mg/dL are considered as diabetic mice (19).

#### Diabetes Treatment

During treatment period, mice were given normal pellet and water. Positive control mice were given orally with 0.5 mL acarbose (150 mg/kg BW). According to treatment, mice (EE, DWE, WDWE) were given 0.5 mL *E. cottonii* extract (300 mg/kg BW). The treatment was given 2 times/day for 15 days (09.00 and 15.00). Mice were fasted for 8 hours before BGL measurement. BGL was measured on day-0, day 3, day 6, day 9, day 12, and day 15 with glucometer (19).

#### Statistical Analysis

Data was analyzed by using the IBM SPSS Statistics Data Editor software. One way ANOVA was used to analyze significant differences among solvent types and solvent concentration of *E. cottonii*. The significant value for data analyzed was set at  $p < 0.05$  (19).

## RESULTS

#### Phytochemical Screening

Based on qualitative phytochemical screening of red seaweed *E. cottonii* extract showed positive results for alkaloids, triterpeneoids, phenolic, flavonoids, and saponins as shown in Table 2. However, steroids were not detected.

**Table 2. Phytochemical screening results of *E. cottonii* crude extract**

Screening Test	Results	Observation
Alkaloid	+	Orange precipitate
	+	White precipitate
Terpenoid	+	Brownish violet
Steroid	-	Brownish precipitate
Flavonoid	+	Light yellow to clear
Phenolic	-	Yellow
Saponin	+	Foam more than 2 minutes

**Extraction of Bioactive Compounds from *E. cottonii***

The mass of extracted compounds from 50 g of *E.cottonii* with solvents including ethanol, distilled water, and warm distilled water were compared in order to optimize the extraction condition.

The highest yield was obtained from warm distilled water extract (6.8%) out of three solvents. The mass of the extracted compounds (in %) using maceration method are summarized in Table 3.

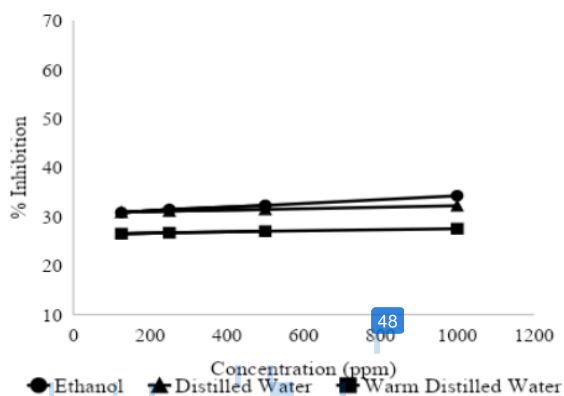
**Table 3. The mass of *E. cottonii* using maceration method**

Extract	Results
Warm Distilled Water	6.8%
Distilled Water	4.4%
Ethanol	2.2%

**Antioxidant Activity with DPPH (1, 1-Diphenyl-2-picryl-hydrazyl) Radical Scavenging Assay**

*E. cottonii* crude extract demonstrated the capacity of DPPH free radicals with increasing concentrations, with ethanolic extract

exhibiting the strongest antioxidant activity values compared with the distilled water and warm distilled water extract. The difference in antioxidant activity between each treatment concentration of all three groups were statistically not significant ( $p>0.05, n=3$ ) (Figure 1; Figure 2).



**Figure 1. Antioxidant activity of *E. cottonii* extract by DPPH assay**

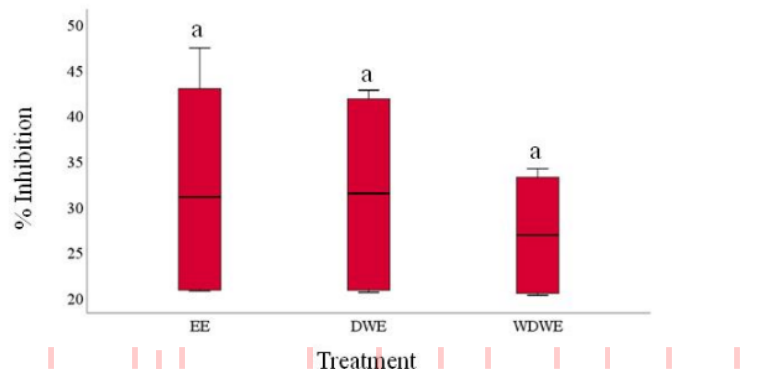


Figure 2. Boxplot of DPPH inhibition by *E. cottonii* extract. Ethanol extract (EE), distilled water extract (DWE), and warm distilled water extract (WDWE).

### Enzyme (α-Amylase) Activity Assay

All extracts of red seaweed *E. cottonii* were found to possess α-amylase inhibitory activity. The inhibition of α-amylase by *E. cottonii* extract with 3 solvents are summarized in Figure 3 and Figure 4. The *E. cottonii* ethanolic extract inhibit the strongest alpha-amylase

inhibitory activity compared with the distilled water and warm distilled water extract. The difference in α-amylase inhibitory activity between each treatment concentration of all three groups were statistically significant ( $p < 0.05$ ).

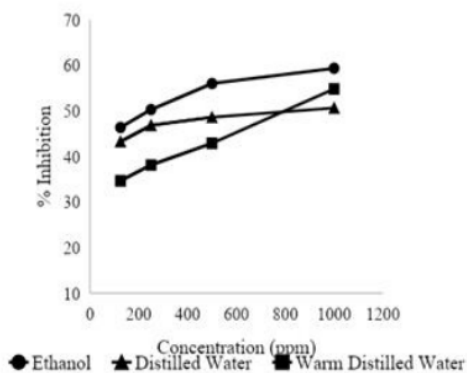
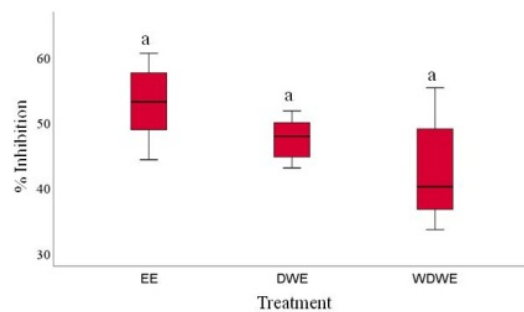


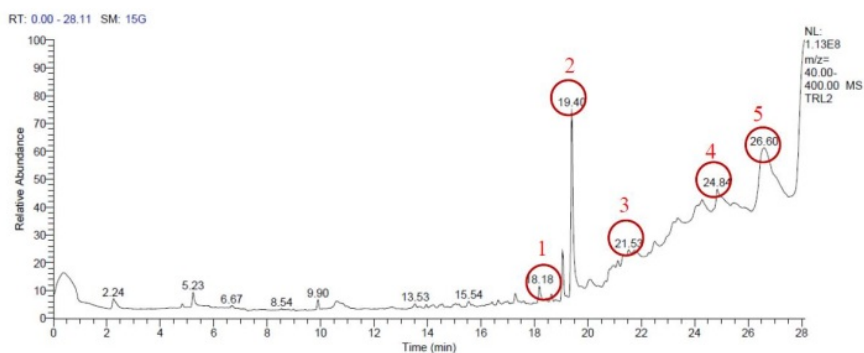
Figure 3. Alpha-amylase inhibitory activity of *E. cottonii* extract



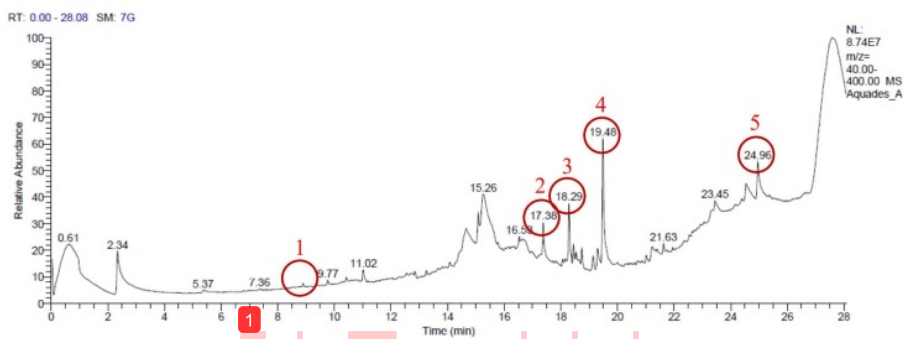
**Figure 4.** Boxplot of a-amylase inhibition by *E. cottonii* extract. Ethanol extract (EE), distilled water extract (DWE), and warm distilled water extract (WDWE).

#### GC-MS Analysis

The GC-MS profiling analyses of *E. cottonii* ethanolic, distilled water, and warm distilled water extracts indicated the presence of 12 compounds (Figure 5; Figure 6; Figure 7). Ethanolic extract showed the presence of many steroid derivatives (Table 4), while distilled and warm distilled water showed the presence of many fatty acids (Table 5 and Table 6).



**Figure 5.** The result of *E. cottonii* ethanolic extract chromatogram



**Figure 6.** The result of *E. cottonii* distilled water extract chromatogram

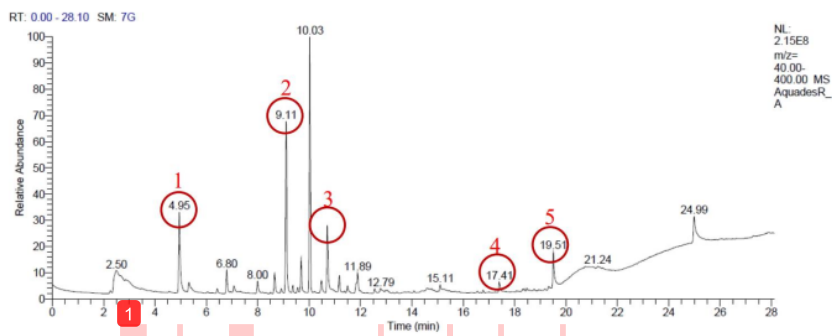


Figure 7. The result of *E. cottonii* warm distilled water extract chromatogram

Table 4. Bioactive components in ethanol extract revealed in chromatogram

No	Compound Name	Compound Nature	MW	Molecular Formula	Biological Properties	References
1	Hexadecanoic Acid, Methyl Esther	Palmitic Acid, Methyl Esther	270	C <sub>17</sub> H <sub>34</sub> O <sub>2</sub>	Antioxidant, Hypocholesterolemic, Nematicide, Pesticide, Antiandrogenic, flavor, Hemolytic, Alphareductase inhibitor	(20)
2	n-Hexadecanoic Acid	Palmitric Acid (Saturated Fatty Acid)	256	C <sub>16</sub> H <sub>32</sub> O <sub>2</sub>	Antioxidant, Hypocholesterolemic, Antiandrogenic, Hemolytic, 5-alpha reductase inhibitor, Antipsychotic	(21)
3	Ethyl Iso-Allocholate	Steroid Derivative	436	C <sub>26</sub> H <sub>44</sub> O <sub>5</sub>	Antimicrobial Activity, Anti-inflammatory, Antiasthma	(22, 23)
4	Ergosta-5,22-dien-3-ol, acetate, (3a,22E)	Steroid	440	C <sub>30</sub> H <sub>48</sub> O <sub>2</sub>	Anti tumor activity and immunomodulatory activity	(24)
5	Sesamin	Lignan	354	C <sub>20</sub> H <sub>18</sub> O <sub>6</sub>	Antioxidant	(25)



**Table 5. Bioactive components in distilled water extract revealed in chromatogram**

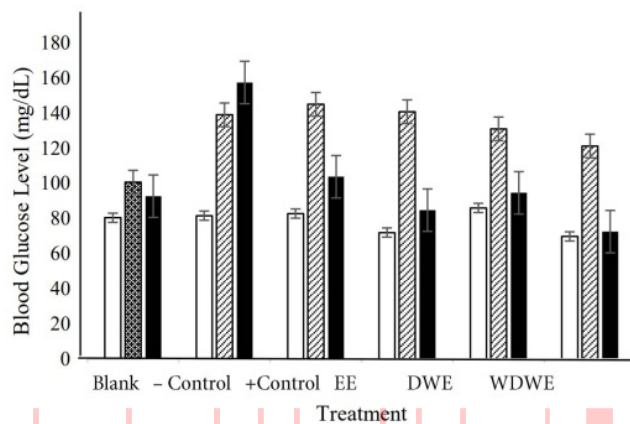
No	Compound Name	Compound Nature	MW	Molecular Formula	Biological Properties	References
1	Ergosta-5,22-dien-3-ol, acetate, (3a, 22E)	Steroid	440	C <sub>30</sub> H <sub>48</sub> O <sub>2</sub>	Antitumor activity and immunomodulatory activity	(24)
2	Tetradecanoic Acid	Acid	228	C <sub>14</sub> H <sub>28</sub> O <sub>2</sub>	Antioxidant, Anti-cancer	(22)
3	Ethyl Iso-Allocholate	Steroid Derivative	436	C <sub>26</sub> H <sub>44</sub> O <sub>5</sub>	Antimicrobial Activity, Anti-inflammatory, Antiasthma	(22, 23)
4	Hexadecanoic Acid	Acid	568	C <sub>35</sub> H <sub>68</sub> O <sub>5</sub>	Antioxidant, Hypocholesterolemic	(22)
5	Hexasiloxane	Silicon based polymer	597	C <sub>12</sub> H <sub>38</sub> O <sub>5</sub> S	Antimicrobial, Antiseptic	(26)

**Table 6. Bioactive components in warm distilled water extract revealed in chromatogram**

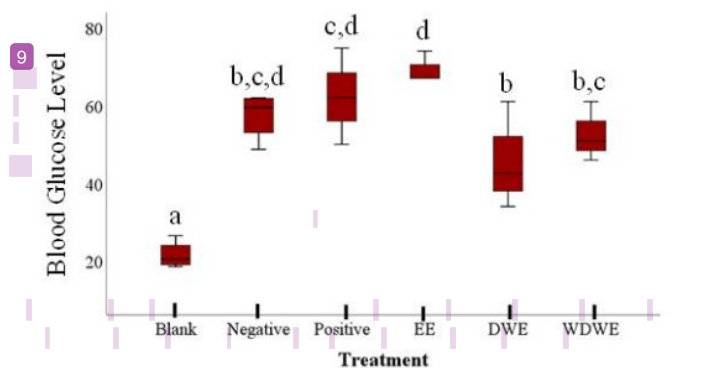
No	Compound Name	Compound Nature	MW	Molecular Formula	Biological Properties	References
1	Furfural	Aldehyde Compound	96	C <sub>5</sub> H <sub>4</sub> O <sub>2</sub>	Antimicrobial preservative	(27)
2	Levogluconone	Fatty Acid	126	C <sub>6</sub> H <sub>6</sub> O <sub>3</sub>	Chiral Agent, Catalyst, Antiviral, Anti-cancer	(28, 29)
3	Ethyl Iso-Allocholate	Steroid Derivative	436	C <sub>26</sub> H <sub>44</sub> O <sub>5</sub>	Antimicrobial Activity, Anti-inflammatory, Antiasthma	(22, 23)
4	Tetradecanoic Acid	Acid	228	C <sub>14</sub> H <sub>28</sub> O <sub>2</sub>	Antioxidant, Anti-cancer	(22)
5	n-Hexadecanoic Acid	Palmitric Acid (Saturated Fatty Acid)	256	C <sub>16</sub> H <sub>32</sub> O <sub>2</sub>	Antioxidant, Hypocholesterolemic, Antiandrogenic, Hemolytic, 5-alpha reductase inhibitor, Antipsychotic	(21)

**Reduction of Blood Glucose Level (BGL) *In Vivo* Assay**

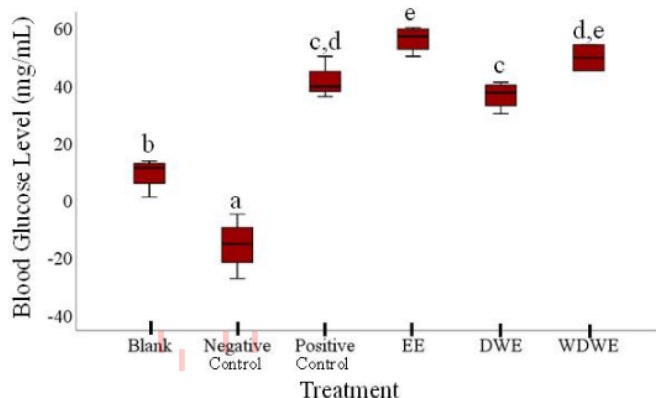
All treatments decreased mice BGL (Figure 8). The highest decreasing value of blood sugar level was ethanolic extract, followed by warm distilled water, and distilled water. Ethanolic extract showed the best activity for decreasing BGL (Figure 9; Figure 10). The difference in blood glucose showed declining activities between each treatment concentration of all three groups were significantly different ( $p < 0.05$ ).



**Figure 8.** Alterations of BGL before DM Induction ,after DM induction ,and after treatment with *E. cottonii* extracts and acarbose for 1day and acarbose for 14 days. Blank, negative control, positive control, ethanol extract (EE), distilled water extract (DWE), and warm distilled water extract (WDWE).



**Figure 9.** Diabetes induction with alloxantetrahydrate. Blank, negative control, positive control, ethanol extract (EE), distilled water extract (DWE), and warm distilled water extract (WDWE).



**Figure 10.** Reduction of blood glucose level. Blank, negative control, positive control, ethanol extract (EE), distilled water extract (DWE), and warm distilled water extract (WDWE).

## DISCUSSION

The crude extracts of seaweed *E. cottonii* were analyzed to determine the active component compound that acts as an antioxidant. The phytochemical compounds detected are known to have medicinal importance. For example, the biological function of flavonoids beside its antioxidant properties are protection from allergies, inflammation, and free radicals (Sheikh *et al.*, 2013). According to previous research, flavonoids play a role in the prevention of diabetic complications (31). Chen *et al.* (2014) proved that saponin from brown seaweed *Radix trichosanthis* acts as antioxidant potency both in vitro and in vivo (32). Alkaloids work as antioxidants. Balanquit and Fuentes (2015) proved that brown seaweed *Sargassum* sp showed antioxidant activity by DPPH assay and  $Fe^{2+}$  chelating ability (33). Triterpenoids work as antioxidant which play an important role in health such as carotenoids for vision and human immune function. Based on previous research, triterpenes are used as antidiabetic remedies in various countries (34). Polyphenol compounds work as free radical scavenging or antioxidants. Phenol can absorb free radicals and can chelate metal ions that could catalyze formation of ROS which promotes lipid peroxidation (35). Flavonoids are phenolic compounds and plant phenolics are a major group of compounds that act as primary antioxidants or free radical scavengers (36).

The extraction is a separation method of one or more solid or liquid material with the aid of solvents. Separation occurs on the basis of different solubility of the inner component mixture. Maceration is an extraction process using solvents with some time shaking or stirring in certain temperature like room temperature. Constant stirring can increase speed reaction of the extraction. Maceration has several advantages, such as low amount of solvent used and the temperature used is below the solvent boiling point in which prevent the degradation of component due to heat (37). Solvents, temperature, extraction time, the polarity of sample, and extraction methods will affect the results of secondary metabolites compound extracted. The principle used is "dissolve like dissolve", depending its polarity solution,

where the non-polar compounds will dissolve in non-polar solvents, while the polar compounds will dissolve in polar solvents (38, 39).

Yield is an important parameter to determine the economic value and effectiveness of a product. Yield is the percentage share of the raw materials that can be utilized. The yield of *E. cottonii* using solvent ethanol, distilled water, and warm distilled water amounted to 2.2%, 4.4%, and 6.8%, respectively. Ethanolic solvents used in this research caused by ethanol is non-toxic solvent compared to methanol (40). Ethanol is a semi polar solvent while distilled water is a polar solvent.

The greatest yield obtained by warm distilled water solvent. This happened because seaweed can be extracted perfectly at high temperatures which are close to the boiling point of the solution (41). Increasing temperature can increase the permeability of cell wall which results in solubility and diffusion bioactive compound increase with decrease the viscosity of solvents to facilitate the extraction process. However, besides being able to increase the solubility of bioactive compounds, increasing temperature can also damage the bioactive compound contained in seaweed (42).

Antioxidant is capable to prevent oxidation by free radicals. DPPH is a free radical compounds which are stable at room temperature is often used for antioxidant assay. DPPH assay has several advantages, such as simple, easy, and using small amount of samples with a short time (43).

Antioxidants worked against oxidative stress and many pathological conditions such as diabetes mellitus and cancer to protect body tissues by neutralizing harmful free radicals such as ROS. ROS causes cell death, skin ageing, and tissue injury from the action of oxidising molecules (44).

The ethanolic extract, distilled water extract, and warm distilled water extract of *E. cottonii* showed potential percentage of DPPH inhibition while ethanolic extract showed the greatest inhibition. Ethanol extract of *E. cottonii* is the greatest extract to inhibit DPPH caused by many phytochemical screening, dissolve in semi polar solvent. Based on the results obtained, the ethanolic extracts which are semi polar extracts, were more powerful and

effective antioxidants compared to the polar distilled water and warm distilled water extracts in DPPH assay (45). Based on previous research, the lowest antioxidant activity obtained by distilled water extract of *K. alvarezii*. The research indicated that non polar compound found in extract possesses strongest ability to scavenge DPPH radicals (46). All extracts showed weak inhibition of DPPH with IC<sub>50</sub> value >200ppm. It happens due to the use of dried seaweed. Heat and sunlight can reduce or damage bioactive component in the seaweed (47). But there are several advantages using dried seaweed as sample, such as cheaper and reduce the chances of decay and mold growth.

Diabetes mellitus is a metabolic disorder caused by inherited and/or acquired deficiency in production of insulin by pancreas. The key player to regulate the metabolism of carbohydrate, fat, and protein is insulin. Insulin deficiency may affect to those metabolism. Reduction of post prandial hyperglycemia can occur when the  $\alpha$ -amylase enzyme is inhibited (48). The ethanolic extract, distilled water extract, and warm distilled water extract of *E. cottonii* showed potential percentage of  $\alpha$ -amylase inhibition while ethanolic extract showed the greatest inhibition.

Inhibitory action of *E. cottonii* extracts increases with the increased concentration. Based on research that has been carried out, the greatest ability to inhibit  $\alpha$ -amylase activity is the secondary metabolites which are known as polyphenol derivatives rather than primary metabolites, such as polysaccharides.

Carrageenan (polysaccharide) is easily soluble in water. This polysaccharides can form a lattice which capable to bind many water molecules. The lattice allows entrapment of substrates or water-soluble enzymes. Substrates and enzymes are trapped in the lattice and are enclosed in the polysaccharide so they do not react each other and there is no formation of simple sugars. Polyphenol inhibit  $\alpha$ -amylase enzyme by delay carbohydrate hydrolysis, disaccharides and glucose absorption, and inhibit the metabolism of sucrose into glucose and fructose (49).

The inhibition of  $\alpha$ -amylase by the secondary metabolites resulted in the failure of the carbohydrate breakdown process to become a monosaccharide form. This explains the effect of bioactive compounds on reducing BGL (50). All extracts showed weak inhibition of  $\alpha$ -amylase with IC<sub>50</sub> value >200ppm. The low activity of  $\alpha$ -amylase inhibitory is due to the use of dried samples. Heat and sunlight can damage the bioactive content in the sample. This result is supported by Sharoet *al.* (2013) (47), phytochemical screening from dry seaweed and extracted by ethanol solvents containing triterpenoid compounds only and not containing alkaloids, flavonoids, and steroids (51).

Nowadays, the GC-MS profiling analysis of *E. cottonii* extract with three solvents revealed the presence of 7 main classes of active compounds such as steroid, acids, esters, terpenoid, methyl ester, palmitic acid, and lignin. There were about 8 compounds in *E. cottonii* extract showed antioxidant activity. GC-MS analysis showed different results with phytochemical screening.

Alkaloids, terpenoids, saponins, and flavonoids are detected in phytochemical screening. Therefore, based on the GC-MS analysis there is steroid compound detected such as ethyl isoallocholate which play a role as antimicrobial activity (22).

Similar results were observed by various previous researches and the compounds were found to have various biological applications such as hypocholesterolemic, antiarthritic, anticoronary, antiandrogenic, antiinflammatory, and anticancer, and antioxidant activities (52).

The presence of bioactive compounds in this research have more potential medicinal importance such as antioxidant, anti-inflammatory, antiviral, anticancer, anti-asthma - antimicrobial, antipyretic, antiseptic, antiarthritic, anti-androgenic, antipsychotic, nematicide, and pesticide.

Alloxan is a compound that can damage the pancreatic beta cells which causes impaired insulin secretion and results in hyperglycemia. Hyperglycemia mice can be seen from the physical condition of mice that emit a lot of urine and drink a lot. *E. cottonii* extracts were able to reduced blood sugar levels of hyperglycemic mice. The higher concentration of seaweed extracts, the higher decrease in blood sugar levels in mice. In other words, the greater concentration of seaweed extract, the faster time needed to reduce the condition of hyperglycemia to normal blood sugar levels.

The ability of *E. cottonii* extracts in reducing blood sugar levels is thought to be related to the high fiber content contained in it. According to previous research, *E. cottonii* contain 61.59% of carrageenan where carrageenan is a complex polysaccharides composed of galactose and anhydrogalactose. This indicates that dietary fiber in *E. cottonii* extracts is dominated by carrageenan.

The ability of *E. cottonii* extracts in reducing blood sugar levels is also suspected because fiber is able to reduce the activity of digestive enzymes and reduce the rate of penetration of enzymes in food. In addition, fiber can slow down the absorption of glucose, which plays a role in regulating BGL (53).

Negative control in Figure 10 showed no correlation on decreasing BGL in diabetic mice (-15.7) otherwise increasing BGL in diabetic mice. It happened due to the absence of insulin. Pancreatic cannot secrete insulin which play a role to convert the sugar into glycogen when the sugar level are high (54). Warm distilled water and ethanolic extract of *E. cottonii* showed the ability of decreasing BGL in diabetic mice below 100 mg/dL. Based on previous research, ethanolic extract of *Sargassum polystum* can decrease BGL in diabetic rats caused by terpenoids and phenolic compound (55). All extracts of *E. cottonii* were statistically significant decreased the mice BGL. It happens due to the presence of phytochemical contents in ethanolic extract and polysaccharides in distilled and warm distilled water extract. Phytochemical contents inhibit the  $\alpha$  glucosidase intestinal also have hypoglycemic effect. Polysaccharides have hypoglycemic effect (49).

## CONCLUSION

Among marine organisms, seaweeds have long been known as therapeutic entities. Due to their rapid growing nature, high content of proteins and diverse profile of bioactive compounds, seaweed can be well positioned as an alternative medicine.

According to in vitro assay ethanolic extract of *E. cottonii* showed the highest antioxidant and  $\alpha$ -amylase inhibitory activity. According to in vivo assay, ethanolic and warm distilled water extract of *E. cottonii* showed the ability of decreasing BGL in diabetic mice below 100 mg/dL. This study showed potential

antioxidant and possess ability to decrease BGL in diabetic mice. However, more comprehensive *in vitro* and *in vivo* studies are needed to elucidate the exact mechanism of its antidiabetic activity. Consequently, the findings of this study suggest that the use of these seaweed extracts may maximize the chances of developing medicine from nature. Further experiment will be needed to optimize the extraction condition of *E. cottonii* warm ethanolic extract.

## REFERENCES

- Shofia V, Mahdi C. Studi Pemberian Ekstrak Rumpuk Laut Coklat (*Sargassum Prismaticum*) Terhadap Kadar Malondialdehid Dan Gambaran Histologi Jaringan Ginjal Pada Tikus (*Rattus Norvegicus*) Diabetes Melitus Tipe I. None.1(1). dengan variasi tempat tumbuh secara spektrofotometri. Jurnal Ilmiah Kefarmasian 2(1):73-80.
- Sarian M, Ahmed Q, Mat So'ad SZ, Alhassan AM, Murugesu S., Perumal V., Syed Mohamad SNA, Khatib A., Latip J. Antioxidant and antidiabetic effects of flavonoids: A structure-activity relationship based study. Biomed Res Int. 2017;2017: 8386065.
- Haryoto, Suhendi A, Ahwan. Identifikasi dari aktivitas antioksidan fraksi non polar ekstrak etanol daun srikaya (*Annona squamosa* L.) dengan metode DPPH. Pharmacon 2009;10(2):51-6.
- Nagarani N, Kumaraguru A. Evaluation of anti-inflammatory, antidiabetic, cytotoxic activity of *Kappaphycus alvarezii*. International Journal of Pharma and Bio Sciences. 2013;4(1).
- Hasanah M, Maharani B, Munarsih E. Daya Antioksidan Ekstrak dan Fraksi Daun Kopi Robusta (*Coffea Robusta*) Terhadap Perekasi DPPH (2, 2-difenil -1-pikrilhidrazil). Indonesian Journal of Pharmaceutical Science and Technology. 2017;4(2):42-9.
- Dolorosa T, Nurjanah PS, Effionora A, Taufik H. Kandungan senyawa bioaktif bubur rumput laut *Sargassum plagyophyllum* dan *Eucheuma cottonii* sebagai bahan baku krim pencerah kulit. Jurnal Pengolahan Hasil Perikanan Indonesia. 2017;20(3):63-44.
- Febriansah Y, Hardoko H, Sastri BB. Pengaruh Pemberian Crude Fucoidan Rumpuk Laut *Eucheuma Cottonii* Terhadap Kadar Glukosa Darah Tikus Putih Wistar (*Rattus Novergicus*). Jurnal Mahasiswa Teknologi Hasil Perikanan. 2013;1(2):71-8.
- Ashwini S, Shantaram M, Babu TS. Comparative HPLC Analysis of Camptothecin and Quercetin Contents in Ethanolic Extracts of *Gracilaria Corticata* (J. Agardh) International Journal of Pharmaceutical Sciences and Research. 2017;8(11): 4710-5.
- Fatmawaty R, Amalia A, Syafitri I, Prasasty VD. Antimalarial Effect of Flamboyant (*Delonix regia*) Bark and Papaya (*Carica papaya* L.) Leaf Ethanolic Extracts against *Plasmodium berghei* in Mice. Biomedical & Pharmacology Journal. 2017;10(3): 1081-9.
- Wijaya DP, Paendong JE, Abidjulu J. Skrining fitokimia dan uji aktivitas antioksidan dari daun Nasi (*Phrynium capitatum*) dengan metode DPPH (1, 1-difenil -2-pikrilhidrazil). Jurnal MIPA. 2014;3(1):11-5.
- Alifian R, Susanti H. Penetapan Kadar Fenolik Total Ekstrak Metanol Kelopak Bunga Rosella Merah (*Hibiscus sabdariffa* L.) dengan Variasi Tempat Tumbuh Secara Spektrofotometri. Jurnal Ilmiah Kefarmasian. 2012;2(1):73-80.
- Purnama R, Putri WAE. Potensi Ekstrak Rumpuk Laut Halimeda renchii dan *Eucheuma cottonii* Sebagai Antibakteri *Vibrio* sp. Maspari Journal. 2014;2(1):82-8.
- Dipnatik D, Anis K. Potensi Penangkapan Radikal Bebas Hasil Analisis Ekstrak Etanol Daun Kepel (*Stelechocarpus Burahol*, (Bl.) Hook F. & Th.) dengan Metode DPPH. Media Farmasi. 2016.
- Zubia M, Fabre MS, Kerjean V, Le Lann K, Stiger-Pouvreau V, Fauchon M, et al. Antioxidant and antitumoural activities of some Phaeophyta from Brittany coasts. Food Chemistry. 2009; 116(3):693-701.
- Wickramaratne MN, PUNCHIHEWA J, Wickramaratne D. In-vitro alpha amylase inhibitory activity of the leaf extracts of *Adenanthera pavonina*. BMC complementary and alternative medicine. 2016;16(1):466.
- Rahul M, Naik S, Tatiya Anil, Maseeh Arun, Ghayal Nivedita, Biware MV. GC-MS Analysis of Phytoconstituents of *Scaevola taccada*, *Caulerpa racemosa*. International Journal of Pharma Research & Review. 2014;3(11):39-45.
- Kasali FM, Fokunang CN, Ngoupayo J, Tembe -Fokunang E, Ngameni B, Njinkio B, et al. Evaluation of the Antidiabetic Properties of Hydro-Alcoholic Extract and Its Fractions from *Physalis peruviana* L. Leaves on Streptozotocin-Induced Diabetic Wistar Rats. Journal of Diseases and Medicinal Plants. 2016;2(6):67-73.
- Osoro JLM, Lacanilao DCG, Sac RAC, Vitor II RJS. Antidiabetic effects of *Cycas ruminata* leaf extracts on alloxan-induced diabetic ICR mice (*Mus musculus* L.). National Journal of Physiology, Pharmacy and Pharmacology. 2017;7(12):1390-6.
- Niogu S, Arika W, Nyamai D, Ngugi M, Machocho A, Ngeranwa al. Hypoglycemic effect of aqueous and ethyl acetate leaf extract of *Maytenus putterlickoides* in alloxan induced diabetic mice. J Diabetes Metab. 2016;7(685):2.
- Zekeya N, Chacha M, Shahada F, Kidukuli A. Analysis of phytochemical composition of *Bersama abyssinica* by gas chromatography-mass spectrometry. Journal of Pharmacognosy and Phytochemistry. 2014;3(4):246-52.
- Tyagi T, Agarwal M. GC-MS Analysis Of Invasive Aquatic Weed, *Pistia stratiotes* L. and *Eichhornia crassipes* (Mart.) Solms. International Journal Current Pharmaceutical Research. 2017;9(3):111-7.
- Malathi K, Ramaiah S. Ethyl iso-allochololate from a medicinal rice *Karunkavuni* inhibits dihydropterolate synthase in *Escherichia coli*: A molecular docking and dynamics study. Indian Journal of Pharmaceutical Sciences. 2017;78(6):780-8.
- Muthulakshmi A, Jothibai MR, Mohan V. GC-MS analysis of bioactive components of *Feronia elephantum correa* (Rutaceae). Journal of Applied Pharmaceutical Science. 2012;2(2):69-74.
- Hussein HM, Hameed I, Ibraheem O. Antimicrobial Activity and spectral chemical analysis of methanolic leaves extract of *Adiantum Capillus -Veneris* using GC-MS and FT-IR spectroscopy. International Journal of Pharmacognosy and Phytochemical Research. 2016;8(3):369-85.
- Kumar CM, Singh SA. Bioactive lignans from sesame (*Sesamum indicum* L.): evaluation of their antioxidant and antibacterial effects for food applications. Journal of food science and technology. 2015;52(5):2934-41.
- Ezekwe SA, Chikezie PC. GC-MS analysis, hypoglycemic activity of aqueous root extract of *Carica papaya* and its effects on blood lipid profile and hepatorenal tissues biomarkers of diabetic rats. J Diabetes Metab. 2017;8(5):508.
- Rajeswari G, Murugan M, Mohan V. GC-MS analysis of bioactive components of *Hugonia mystax* L. bark (Linaceae). J Pharm Biomed Sci. 2013;29(29):818-24.
- Kudo S, Zhou Z, Yamasaki K, Norinaga K, Hayashi J-i. Sulfonate ionic liquid as a stable and active catalyst for levoglucosone production from saccharides via catalytic pyrolysis. Catalysts. 2013;3(4):757-73.
- Altameme HJ, Hameed IH, Abu-Serag NA. Analysis of bioactive phytochemical compounds of two medicinal plants, *Equisetum arvense* and *Alchemilla vulgaris* seed using gas chromatography-mass spectrometry and fourier-transform infrared spectroscopy. Malays Appl Biol. 2015;44(4):47-58.

30. Sathyanarayana N, Kumar Y, Misra A, Pfoze L. Phytochemical screening to validate the ethnobotanical importance of root tubers of *Dioscorea* species of Meghalaya, North East India. *Journal of Medicinal Plants*. 2013;1(6):62-9.
31. Testa R, Bonfigli AR, Genovese S, De Nigris V, Ceriello A. The possible role of flavonoids in the prevention of diabetic complications. *Nutrients*. 2016;8(5):310.
32. Chen Y, Miao Y, Huang L, Li J, Sun H, Zhao Y, et al. Antioxidant activities of saponins extracted from *Trichosanthis*: an in vivo and in vitro evaluation. *BMC complementary and alternative medicine*. 2014;14(1):86.
33. Balanquit BJR, Fuentes RG. Preliminary Phytochemical Screening and Antioxidant Activity of Some Brown Algae *Sargassum* Species From Lawaan, Eastern Samar. *Journal of Nature Studies*. 2015;14(1):12-21.
34. Nazaruk J, Borzym-Kluczyk M. The role of triterpenes in the management of diabetes mellitus and its complications. *Phytochemistry Reviews*. 2015;14(4):675-90.
35. Rajanandh M, Kavitha J. Quantitative estimation of  $\beta$ -sitosterol, total phenolic and flavonoid compounds in the leaves of *Moringa oleifera*. *International Journal of PharmTech Research*. 2010;2(2):1409-14.
36. Ayoola G, Coker H, Adesegun S, Adepoju-Bello A, Obaweya K, Annia EC, et al. Phytochemical screening and antioxidant activities of some selected medicinal plants used for malaria therapy in Southwestern Nigeria. *Tropical Journal of Pharmaceutical Research*. 2008;7(3):1019-24.
37. Nurjanah NM, Anwar E, Luthfiyana N, Hidayat T. Identification of bioactive compounds of seaweed *Sargassum* sp. and *Euचेuma cottonii* doty as a raw sunscreen cream. *Proceedings of the Pakistan Academy of Sciences: B Life and Environmental Sciences*. 2017;54(4):311-8.
38. Dewi I, Astuti K, Warditiani N. Identifikasi kandungan kimia ekstrak kulit buah manggis (*Garcinia mangostana* L.). *Jurnal Farmasi Udayana*. 2013.
39. Hip S, Fook Y, Swee K, Chun W. Phenolic profiles of selected edible wild mushrooms as affected by extraction solvent, time and temperature. *Asian Journal of Food and agro-industry*. 2009;2(3):392-401.
40. Sari BL, Susanti N, Sutanto S. Skrining Fitokimia dan Aktivitas Antioksidan Fraksi Etanol Alga Merah *Euचेuma spinosum*. *Pharmaceutical Sciences and Research (PSR)*. 2017;2(2):59-68.
41. Hudha MI, Sepdwiyanti R, Sari S. Ekstraksi Karaginan dari Rumput Laut (*Euचेuma spinosum*) dengan Variasi Suhu Pelarut dan Waktu Operasi. *Berkala Ilmiah Teknik Kimia*. 2012;1(1):17-20.
42. Wardhani DH, Prasetyaningrum A. Kajian Isolasi Senyawa Fenolik Rumput Laut *Euचेuma Cottonii* Berbantu Gelombang Micro dengan Variasi Suhu dan Waktu. *Jurnal Teknik Kimia*. 2013;19(3).
43. Muawanah M, Ahmad A, Natsir H. Antioxidant Activity And Toxicity Polysaccharide Extract From Red Algae *Euचेuma Cottonii* And *Euचेuma Spinosum*. *Marina Chimica Acta*. 2016;17(2).
44. Namvar F, Mohamed S, Fard SG, Behravan J, Mustapha NM, Alitheen NBM, et al. Polyphenol-rich seaweed (*Euचेuma cottonii*) extract suppresses breast tumour via hormone modulation and apoptosis induction. *Food chemistry*. 2012;130(76-82).
45. Rani RK, Kar M, Routray R. DPPH free radical scavenging activity of some leafy vegetables used by tribals of odisha, India. *J Med Plants*. 2013;1(4):21-7.
46. Supria VP, Purnomo H, Sukoso and Aulani'am. 2011. Red seaweed (*Kappaphycus alvarezii* DOTY) from Mollucas island water as potential flavonoid resource of natural antioxidant. *Livestock Research for Rural Development*. 23:12.
47. Sharo NM, Ningsih R, Hanapi A, Nasichuddin A. Uji Toksisitas dan Identifikasi Senyawa Ekstrak Alga Merah (*Euचेuma cottonii*) Terhadap Larva Udang *Artemia salina* leach. *CHEMY*. 2013.
48. Raman B, Krishna N, Rao N, Saradhi P, Rao B. Plants with antidiabetic activities and their medicinal values. *Int Res J Pharm*. 2012;3(3):11-5.
49. You Q, Chen F, Wang X, Jiang Y, Lin S. Anti-diabetic activities of phenolic compounds in muscadine against  $\alpha$ -glucosidase and pancreatic lipase. *LWT-Food science and technology*. 2012;46(1):164-8.
50. Samudra GN, Husni A. Aktivitas inhibisi  $\alpha$ -amilase ekstrak karagenan dan senyawa polifenol dari *Euचेuma denticulatum*. *Media Farmasi*. 2015;12(1):83-92.
51. Lantah PL, Montolalu LA, Reo AR. Kandungan fitokimia dan aktivitas antioksidan ekstrak metanol rumput laut *Kappaphycus alvarezii*. *Media Teknologi Hasil Perikanan*. 2017;5(3):73-9.
52. Dhevika S, Deivasigamani B. Phytochemical Profiling and GC-MS Analysis of *Caulerpa racemosa*. 2018.
53. Ibrahim R, Dewi EN, SA CT. The Effect of *Gracilaria verrucosa* Extract Feeding to the Blood Glucose Content White Rats (*Rattus norvegicus*). *Saintek Perikanan*. 8(1):1-6.
54. Chambers D, Huang C, Matthews G. *Basic physiology for anaesthetists*: Cambridge University Press; 2019.
55. Husni A, Anggara FP, Isnansetyo A, Nugroho AE. Blood glucose level and lipid profile of streptozotocin-induced diabetic rats treated with *Sargassum polystum* extract. *Int J Pharm Clin Res*. 2016;8(8):445-50.

aRtxmtrAeb ef vbrAewAntbr tbn vbrAnAti rAo vorARArAes fced I  
n u tS n Ec)eam)oh eniint u

ORIGINALITY REPORT

9%

SIMILARITY INDEX

8%

INTERNET SOURCES

3%

PUBLICATIONS

2%

STUDENT PAPERS

PRIMARY SOURCES

1	<a href="ftp.cbi.pku.edu.cn">ftp.cbi.pku.edu.cn</a> Internet Source	1%
2	<a href="jreoperv.komplat.by">jreoperv.komplat.by</a> Internet Source	1%
3	<a href="www.cluburidefilmnewworld.ro">www.cluburidefilmnewworld.ro</a> Internet Source	<1%
4	<a href="arpedu.in">arpedu.in</a> Internet Source	<1%
5	<a href="aitwa.org">aitwa.org</a> Internet Source	<1%
6	<a href="mafiadoc.com">mafiadoc.com</a> Internet Source	<1%
7	<a href="repository.uobabylon.edu.iq">repository.uobabylon.edu.iq</a> Internet Source	<1%
8	Shinji Kudo, Nozomi Goto, Jonathan Sperry, Koyo Norinaga, Jun-ichiro Hayashi. "Production of Levoglucosenone and	<1%

# Dihydrolevoglucosenone by Catalytic Reforming of Volatiles from Cellulose Pyrolysis Using Supported Ionic Liquid Phase", ACS Sustainable Chemistry & Engineering, 2016

Publication

---

9	<a href="https://www.pastebin.com">pastebin.com</a> Internet Source	<1%
10	<a href="https://bmccomplementaltermmed.biomedcentral.com">bmccomplementaltermmed.biomedcentral.com</a> Internet Source	<1%
11	<a href="https://pt.scribd.com">pt.scribd.com</a> Internet Source	<1%
12	<a href="https://e-sciencecentral.org">e-sciencecentral.org</a> Internet Source	<1%
13	<a href="https://thno.org">thno.org</a> Internet Source	<1%
14	Submitted to Quest International University Perak Student Paper	<1%
15	Ema Pristi Yunita, Astilia Mildha Yuniar, Inggita Kusumastuty, Alma Maghfirotnun, Dian Handayani. " The Effects of $\beta$ -glucan Extract from Oyster Mushroom on Expression of Serum Malondialdehyde in Rats Induced by HFHF Diet ", Journal of Physics: Conference Series, 2020 Publication	<1%

---



16	<a href="http://repository.its.ac.id">repository.its.ac.id</a> Internet Source	<1%
17	<a href="http://www.oddballswar.com">www.oddballswar.com</a> Internet Source	<1%
18	<a href="http://gamow.ist.utl.pt">gamow.ist.utl.pt</a> Internet Source	<1%
19	<a href="http://classical.gootar.com">classical.gootar.com</a> Internet Source	<1%
20	<a href="http://www.dovepress.com">www.dovepress.com</a> Internet Source	<1%
21	<a href="http://www.hindawi.com">www.hindawi.com</a> Internet Source	<1%
22	Sweetie R. Kanatt, Priyanka Lahare, S. P. Chawla, Arun Sharma. "Kappaphycus alvarezii : Its antioxidant potential and use in bioactive packaging films", Journal of Microbiology, Biotechnology and Food Sciences, 2015 Publication	<1%
23	<a href="http://thpi.studentjournal.ub.ac.id">thpi.studentjournal.ub.ac.id</a> Internet Source	<1%
24	<a href="http://www.internationalpatriarchalalliance.com">www.internationalpatriarchalalliance.com</a> Internet Source	<1%
25	<a href="http://www.dtaq.re.kr">www.dtaq.re.kr</a> Internet Source	<1%

26	S Rohmat, Nisyawati, S E Rahayu. " Diversity of medicinal plants for pregnancy and postpartum care of tribe in Mantangai sub-district, Kapuas regency, Central Kalimantan ", Journal of Physics: Conference Series, 2019 Publication	<1%
27	Submitted to University of KwaZulu-Natal Student Paper	<1%
28	Submitted to Academic Library Consortium Student Paper	<1%
29	<a href="http://repositorio.unicamp.br">repositorio.unicamp.br</a> Internet Source	<1%
30	<a href="http://www.isma-isaac.be">www.isma-isaac.be</a> Internet Source	<1%
31	<a href="http://www.clemson.edu">www.clemson.edu</a> Internet Source	<1%
32	<a href="http://www.octonus.com">www.octonus.com</a> Internet Source	<1%
33	<a href="http://mtc-m21b.sid.inpe.br">mtc-m21b.sid.inpe.br</a> Internet Source	<1%
34	<a href="http://www.longdom.org">www.longdom.org</a> Internet Source	<1%
35	<a href="http://silo.pub">silo.pub</a> Internet Source	<1%

36	<a href="http://innovareacademics.in">innovareacademics.in</a> Internet Source	<1%
37	<a href="http://jurnal.ugm.ac.id">jurnal.ugm.ac.id</a> Internet Source	<1%
38	<a href="http://star.mpae.gwdg.de">star.mpae.gwdg.de</a> Internet Source	<1%
39	<a href="http://revistas.uptc.edu.co">revistas.uptc.edu.co</a> Internet Source	<1%
40	<a href="http://ruchischool.ru">ruchischool.ru</a> Internet Source	<1%
41	<a href="http://www.researchgate.net">www.researchgate.net</a> Internet Source	<1%
42	<a href="http://www.openaccess.hacettepe.edu.tr:8080">www.openaccess.hacettepe.edu.tr:8080</a> Internet Source	<1%
43	<a href="http://www.masco.org">www.masco.org</a> Internet Source	<1%
44	<a href="http://scholar.unand.ac.id">scholar.unand.ac.id</a> Internet Source	<1%
45	<a href="http://www.mgbordados.com.br">www.mgbordados.com.br</a> Internet Source	<1%
46	<a href="http://svs.gsfc.nasa.gov">svs.gsfc.nasa.gov</a> Internet Source	<1%
47	<a href="http://ceb.dfki.uni-kl.de">ceb.dfki.uni-kl.de</a> Internet Source	<1%

<1%

48

[www.essebiweb.it](http://www.essebiweb.it)

Internet Source

<1%

49

[it.scribd.com](http://it.scribd.com)

Internet Source

<1%

50

Birhanu Geta Meharie, Gedefaw Getnet Amare, Yaschilal Muche Belayneh. "

Evaluation of Hepatoprotective Activity of the Crude Extract and Solvent Fractions of *Clusia abyssinica* (*Euphorbiaceae*) Leaf Against CCl<sub>4</sub>-Induced Hepatotoxicity in Mice

", Journal of Experimental Pharmacology, 2020

Publication

<1%

51

Nur Aji. "Formulasi Gel Ekstrak Bunga Bougainvillea glabra dan Uji Potensi Tabir Surya dengan Metode Spektrofotometri UV Vis", Jurnal Kesehatan, 2020

Publication

<1%

52

Brian Sheng Xian Teo, Rui Yi Gan, Sarah Abdul Aziz, Thanchanok Sirirak, Mohd Fadli Mohd Asmani, Eddy Yusuf. " evaluation of antioxidant and antibacterial activities of extract and its evaluation of the wound healing activity in mice ", Journal of Cosmetic Dermatology, 2020

<1%

## Publication

---

Exclude quotes      On

Exclude matches      Off

Exclude bibliography      On