

# Control of 3-Axis Satellite Reaction Wheel using PID Control Optimized Genetic Algorithms

*by* Erna Wati

---

**Submission date:** 14-Oct-2020 01:24PM (UTC+0700)

**Submission ID:** 1414763699

**File name:** paper\_ijeat\_q4.pdf (1.12M)

**Word count:** 2933

**Character count:** 15352

# Control of 3-Axis Satellite Reaction Wheel using PID Control Optimized Genetic Algorithms

Erna Kusuma Wati, Yulio Ramadhan, Hari Hadi S

**Abstract** Satellite Attitude Determination and Control System (ADCS) uses an active actuator with a Reaction wheel. This study uses PID and genetic algorithms to control the Reaction wheel. The initial population was 200, and the crossover rate was 0.8, the mutation constant was 0.01 with a stop generation criteria of 50 generations. Reaction Wheel Control in a closed ring with optimized PID control. The Genetic Algorithm has transient response characteristics that are 1 seconds rise time, 9 seconds settling time, 33.2% overshoot with an ITAE performance index of 481.9479. Use the Matlab program to conduct a Smart Nanosatellite Attitude Propagator (SNAP) simulator to create a 3-axis reaction wheel model as its actuator. The satellite is the object of control, simulating the satellite conditions in a tumbling state having the initial angular velocity  $[0.5 \ 0.5 \ 0.5]^\circ / \text{second}$  when tumbling which makes the satellite angular velocity to  $[0 \ 0 \ 0]^\circ / \text{second}$ . Roll and yaw axes have a significant enough error that is  $1 \text{ rad/s}$  and  $-1 \text{ rad/s}$  while the pitch axis has a small error that is  $1.5 \times 10^{-3} \text{ rad/s}$  and  $-1.5 \times 10^{-3} \text{ rad/s}$ .

**Keywords:** Reaction Wheel, Genetic Algorithm, Satellite.

## I. INTRODUCTION

Attitude Determination Control System (ADCS) is one of the satellite subsystems, whose task is to determine and control the orientation of satellites [2]. Control of satellite orientation is crucial to run well. Figure 1 is a block diagram of the ADCS component, which includes input, controller, actuator, measurement, and output

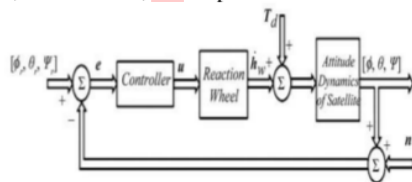


Fig 1. ADCS Diagram Blok

To model satellite dynamic equations using Simulink and MATLAB software [3].

The control system in this study is PID and combines sliding mode with PID (Sliding-PID) to get more optimal control. Another control is to use artificial neural networks (ANN). ANN get optimal control on the controller, then when simulating it must be with a small satellite that has three reaction wheels. In this Research will design a reaction wheel using PID control and optimization with Genetic Algorithms using a MATLAB-based Smart Nano satellite Attitude Propagator (SNAP) simulator.

PID is a control system consisting of three types, namely P (Proportional) control, which functions to accelerate the response, I control (Integral), which functions to correct and reduce offset, and control D (Derivative) which functions to predict and reduce overshoot. P (Proportional) control, PI (Proportional-Integral) control, PD (Proportional-Derivative) control, and PID (Proportional-Integral-Derivative) control [4].

PID control mathematically as follows

$$M(t) = Kp[e(t) + 1/Ti \int e(t)dt + Td(de(t)/dt)] \quad (1)$$

Genetic Algorithms are heuristic search algorithms based on biological evolutionary mechanisms. The diversity of natural evolution is a variation of chromosomes between individual organisms. These chromosome variations will affect the rate of reproduction and the level of the organism's ability to stay alive. John Holland said that every problem in the form of adaptation (natural or artificial) could be solved by formulation in genetic terminology [5]

LAPAN-TUBS AT is a microsatellite developed by the National Institute of Aviation and Space (LAPAN) in collaboration with the Technical University of Berlin (Technische Universität Berlin; TU Berlin). This vehicle is designed based on another satellite called DLR-TUBS AT but also includes a new star sensor. The box-shaped LAPAN-TUBS AT satellite weighing 57 kilograms and dimensions 45 x 45 x 27 centimeters to directly monitor the situation on Earth such as forest fires, volcanoes, floods, store and forward communication messages in Indonesian territory, and for mobile communication missions.

Reaction Wheel (RW) is an active actuator to regulate satellite rotation. RW works based on the principle of conservation of angular momentum; changes in the rotational speed of RW eat torque that will affect the rotational motion of the satellite. RW actuators consist of several parts, namely the Brushless DC Motor (BLDC) as a torque generator on the Flywheel transfer function as follows.

Received Manuscript Received on February 05, 2020.

\* Correspondence Author

Erna Kusuma Wati\*, Physics of Engineering, Universitas Nasional, Jakarta, Indonesia. Email: ernakusuma.w@gmail.com

Yulio Ramadhan, Physics of Engineering, Universitas Nasional, Jakarta, Indonesia

Hari Hadi S, Physics of Engineering, Universitas Nasional, Jakarta, Indonesia

## II. METHOD

### A. Modeling wheel Reaction Control System

Reaction Wheel (RW) is an active actuator to regulate satellite rotation. RW works based on the principle of conservation of angular momentum; changes in the rotational speed of RW eat torque that will affect the rotational motion of the satellite. RW actuators consist of several parts, namely the Brushless DC Motor (BLDC) as a torque generator on the Flywheel. Transfer function as follows:

$$L_a \frac{di_a}{dt} = V - I_a R_a - K_b W_m \quad (2)$$

$$J \frac{dW_m}{dt} = K_t i_a - B W_m \quad (3)$$

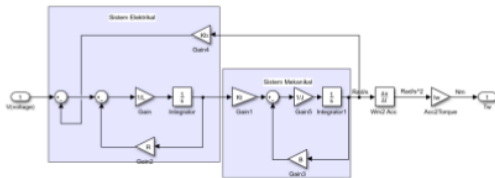


Fig 2. Diagram Block Reaction wheel

Table 1. BLDC (2444 048B) and Flywheel Motor Specification[15]

Resistor (R)	8.4 Ohm
constant	$2.115 \times 10^{-3}$ V/RPM
Back-EMF (Ke)	
Constanta Torsi (J)	$20.2 \times 10^{-3}$ Nm/A
Inersia Rotor (Irotor)	$6.5 \text{ g.cm}^2$
Mass Flywheel	652 g
Inersia Flywheel	$912.6 \times 10^{-6} \text{ kg.m}^2$

To make an open ring wheel reaction system test, it requires data specifications Table 1 to insert it into a block diagram. step input signal with initial value = 0 and final value = 1. The input data step gets information about the stability of the system because it has a constant final value. The results in Figure 3 show the reaction wheel response curve exceeds the desired setpoint (final value), so it requires control so that the system can reach the setpoint. The reaction wheel response in the opening ring has a rise time of 424 seconds and a settling time of 755 seconds, where the final value obtained is 1.32.

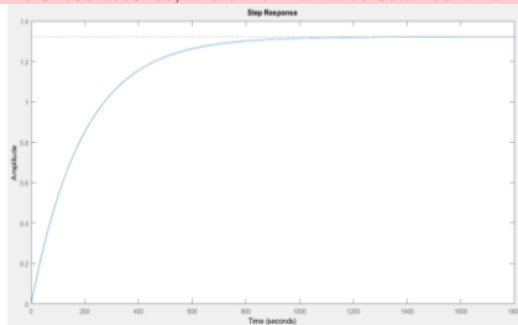


Fig 3. Reaction Wheel Response to open ring

### B. Reaction Wheel Control

Figure 4 is a closed ring wheel reaction control system with error is the angular velocity value of the reaction wheel to obtain the angular velocity  $W_{des} = W_{ref} - W_m$

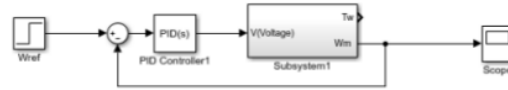


Fig 4. Closed ring wheel Reaction Control System

### C. The Ziegler-Nichols Open Circle Penalty

Penalty aims to obtain PID control parameters. The method in this study is the Z-N tuning method in the open ring. The s-shaped curve has two constants, namely dead time (L) and delay time (T). the next step is to calculate the constant based on Table 2. Thus obtaining an s-shaped curve response. Then got the following parameters

a. Dead time (L) Parameter

$$0.6 * \Delta PV = 0.63 * 1.32 = 0.83 \rightarrow t_{63\%} = 292.76 - 108 = 184.76s$$

b. Delay Time (T) Parameter

$$T = 100 - 108 = 8s$$

Table 2. Z-N Tuning Open Circumference

Type PID	Kp	Ki	Kd
P	$\frac{T}{L}$	$\infty$	-
PI	$0.9 \frac{T}{L}$	$\frac{L}{0.3}$	-
PID	$1.2 \frac{T}{L}$	2L	0.5L

### D. Optimization of Genetic Algorithms

Determine PID control parameters using genetic algorithms. The parameters in the tuning of the PID control (randomly) are in the table 3.

Table 3. Genetic Algorithm Parameters

Initial population	200
Crossover rate	0.8
Mutation Constant	0.01
Elitism	10
Termination Criteria	50 Generation

### Satellite Dynamics Diagram Block

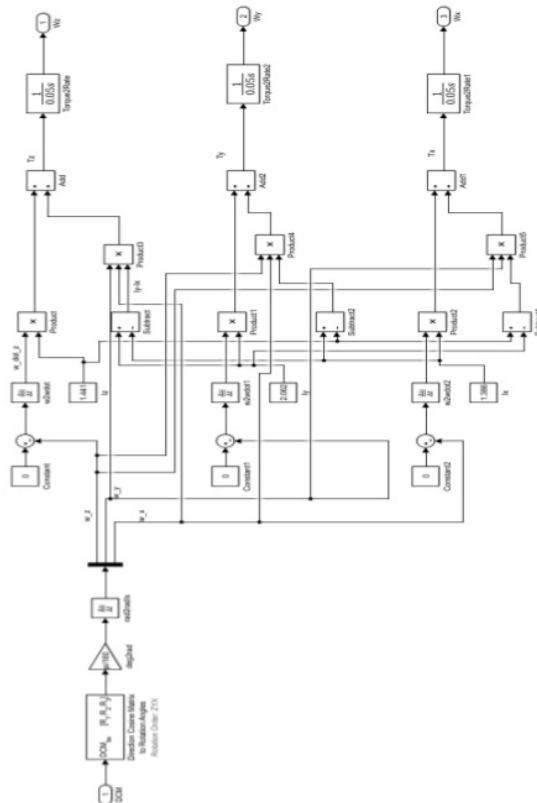


Fig 5. Satellite Dynamics Diagram Block

### E. Simulator

To carry out satellite orientation simulation in this study using the MATLAB program with the Smart Nanosatellite Attitude Propagator (SNAP) platform. SNAP is a 6-DOF satellite orientation propagator implemented in MATLAB. As shown in Figure 6, there are several parts, namely Orbital Information, Satellite Description, and Simulation Parameters.

- Orbital information ; in this section, the input parameters are the orbit information from the satellite.
- Satellite Description UTo ; enter information related to satellite specifications.
- Simulation Parameters; Contains parameters in the simulation, such as the duration of the simulation and the initial rotation (tumbling)

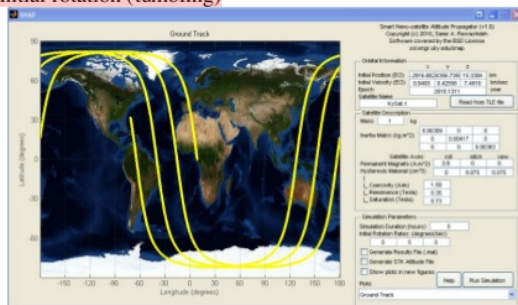


Fig 6. SNAP interface

## III. RESULT AND DISCUSSION

Closed-loop wheel reaction control system with an error signal is the angular velocity value of the reaction wheel so that the angular velocity is  $W_{des} = W_{ref} - W_m$ .

PID control requires P, I, and D as its control parameters, tuning to get optimal P, I, and D parameters. There are many tuning methods, including Cohen-Coon, Ziegler-Nichols.

Table 4. PID parameters with Z-N tuning

PID Parameter	Value
Proporsional	27.714
Integral	16
Derivatif	4

Although the initial value generation process is random, the reference value is still around the amount of the tuning that has been done. The lower limit is [-30 -30 -30], and the upper limit is [30 30 30]. The process of PID Optimization by Genetic Algorithm for ten times.

PID control parameters use genetic algorithms. PID Tuning using Genetic Algorithms with parameters according to table 5, you will get the parameters P, I, D, as in table 3.

Parameter PID	Nilai
Proporsional	9.983
Integral	0.938
Derivatif	-9.99
ITSE	481.9479

The optimization results show that the highest ITAE value is 1134.44, and the lowest value is 481.9479. The second transient optimization response for the input step is as shown in Figure 7

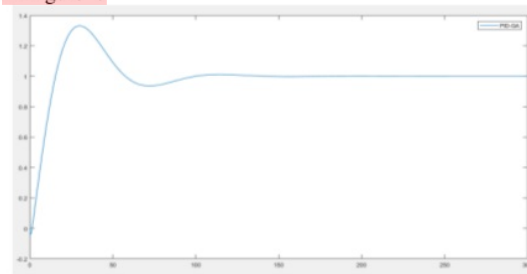


Fig 7. Transient response to step input

Based on this response, the reaction wheel reaches a setpoint of 1 rad / s less than 200 seconds. The transient response characteristics in table 5

Table 5 Characteristics of PID-GA Transient Responses.

Karakteristik	Value
Rise time	11 sec
Settling time	91 sec
Overshoot	33.2%

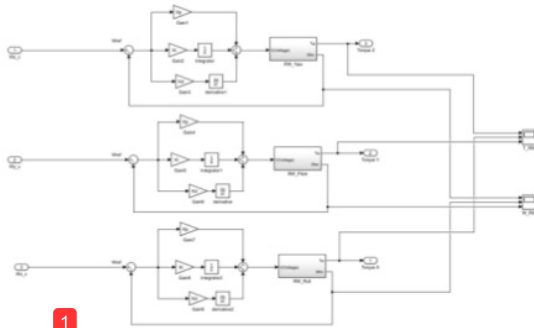
### F. 3-Axis Reaction Wheel Control

In this simulation, using three wheels of reaction for each of the x, y, z axes, and each reaction wheel are identical so that the optimization value of PID on the three reaction wheels is the same.



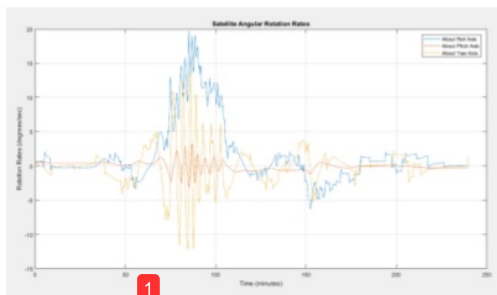
# **Control of 3-Axis Satellite Reaction Wheel Using PID Control Optimized Genetic Algorithms**

Then the block diagram is shown in Figure 8 with the output in the form of torque for each axis that will be input in satellite control, with an error value in the way of angular velocity resulting from the reaction wheel.



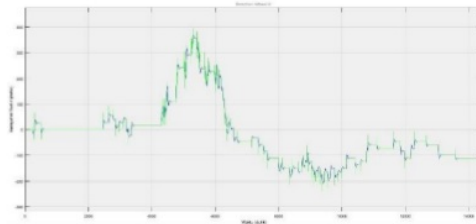
**Fig 8. 3-Axis Reaction Wheel Diagram Block**

By using the SNAP simulator for 4 hours is one satellite orbit rotation LAPAN TUBS AT A1. By making the satellite in a tumbling state (the satellite has the initial angular velocity  $[0.5 \ 0.5 \ 0.5]^\circ/\text{sec}$ ), the next step is detumbling, which is making the satellite angular velocity to  $[0 \ 0 \ 0]^\circ/\text{sec}$ . Values less than 0 or minus (-) indicate movement in the opposite direction from values greater than 0 or plus (+). From figure 4.7 d at 50 and 100 minutes, the satellite has increased angular velocity. On the roll axis, the greatest angular velocity value is  $19.65^\circ/\text{sec}$  in minute 85. The pitch axis has the largest angular velocity value of  $3.33^\circ/\text{sec}$  at 86 minutes. And the yaw axis has the largest angular velocity value of  $13.56^\circ/\text{seconds}$  at minute 85. Then all axes experience a slowing of the angular velocity. The value of satellite angular velocity at the end of the simulation is  $[-0.3 \ 0 \ 1.2]^\circ/\text{sec}$ .

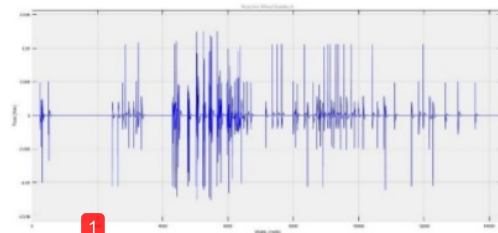


**Fig 9. Satellite Angular Velocity**

In Figure. The angular speed of the reaction wheel is blue, and Green is the desired angular velocity or setpoint. Figure 10 shows that the response speed of the reaction wheel angle follows the setpoint. Then Figure 11 shows the reaction wheel torque in the range of 0.015 Nm and -0.015 Nm, which can affect satellites on the roll axis

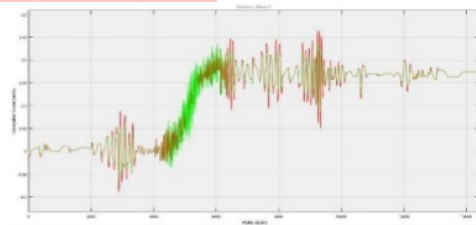


**Fig 10. Angular velocity Reaction Wheel X-Axis**

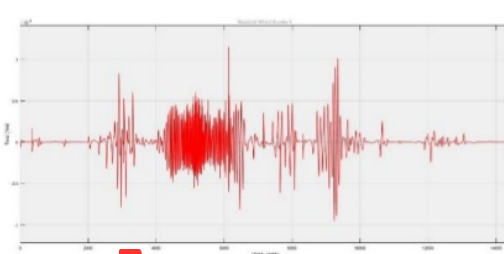


**Fig 11. Torsi Reaction Wheel X-Axis**

Next in Figure 12 and 13 shows a graph for angular velocity and torque by the reaction wheel on the Y-axis. The angular velocity in Figure 12 is a red line, and the desired angular velocity is green. Figure 13 shows the torque for the reaction wheel on the Y-axis with a torque range between 0.0001 Nm to -0.0001 Nm.



**Fig 12. Angular velocity Reaction Wheel Y-Axis**



**Fig 13. Torsi Reaction Wheel Y-Axis**

Then Figure 14 is a graph of angular velocity and torque on the Z-axis reaction wheel. The angular velocity shown in Figure 14 is a yellow line, and the setpoint angle is green. Figure 15 shows the torque in the reaction wheel on the Y-axis with a torque range between 0.015 Nm to -0.015 Nm.

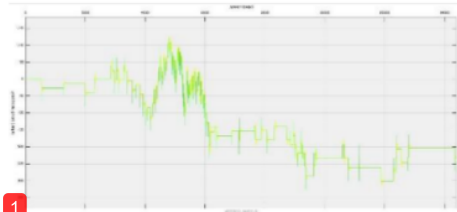


Fig 14. Angular velocity Reaction Wheel Z-Axis

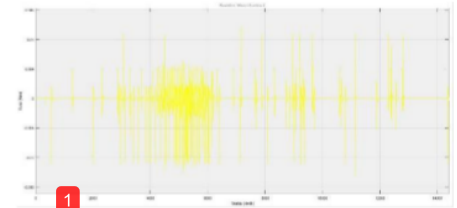


Fig 15. Torsi Reaction Wheel Z-Axis

The average value of the error in the closed wheel of the reaction wheel for each x, y, and the z-axis in table 4.4. The error value in the closed wheel of the reaction wheel is the value of the angular velocity produced by the reaction wheel reduced by the desired angular velocity value  $W\_error = W\_ref - W\_m$

Table. 6  $W\_error$  Average

Reaction Wheel	Average Error
X	-0,0064 rad/s
Y	$1,909 \times 10^{-6}$ rad/s
Z	0,0134 rad/s

you see the angular velocity response generated by the x-axis reaction wheel is good enough because the Angular velocity value matches the setpoint value. Looking at table 6, the average  $W\_error$  during the simulation for each angle has a value below 1 rad / s, and this means that the results of this response are under the response wheel's closed ring response.

#### IV. CONCLUSION

- Genetic Algorithm uses an initial population of 200 populations, a crossover rate of 0.8, a mutation constant of 0.01. The stopping criterion is 50 generations with a fitness function based on the PID performance index, namely ITAE, by optimizing ten (10) times. produces P, I, and D values with the lowest ITAE performance index of 1,9479 for a reaction wheel, namely Proportional (P) 9,983, Integral (I) 0.938, and Derivatives (D) -9.99
- Reaction Wheel in its closed circumference using the optimized PID control Genetic Algorithm has transient response characteristics that are 11 seconds rise time, 91 seconds set time, 33.2% overshoot. One reaction wheel comes three identical pieces in the framework of controlling 3-axis
- Control of the LAPAN-TUBS AT A1 3-Axis Reaction Wheel using the SNAP Simulator. By entering the orbital parameters and the LAPAN-TUBS AT A1 satellite body, in a tumbling state, it has the initial angular velocity  $[0.5 \ 0.5 \ 0.5]^\circ / \text{sec}$  then detumbling by making the satellite

- angular velocity to  $[0 \ 0 \ 0]^\circ / \text{sec}$ . On the roll axis, the greatest angular velocity value is  $19.65^\circ / \text{sec}$  in 85 minutes. The pitch axis has the largest angular velocity value of  $3.33^\circ / \text{sec}$  in 86 minutes. And the yaw axis has the largest angular velocity value of  $13.56^\circ / \text{seconds}$  in 85 minutes. Then all axes experience a slowing down of angular velocity. The value of satellite angular velocity at the end of the simulation is  $[(-0.3 \ \& \ 0 \ 1.2)]^\circ / \text{sec}$
- Based on the 3-axis reaction wheel response graph, the PID control optimized by the genetic algorithm gets a pretty good value because the angular velocity value matches the setpoint value with the average  $W\_error$  for all angles having values below 1 rad / s.

#### REFERENCES

- S. R. Starin, Attitude Determination and Control Systems, Microcosm, 2010.
- Imroatul and H. Nurhadi, "Komparasi Sistem Kontrol Satelit (ADCS) dengan Metode Kontrol PID dan Sliding-PID," Jurnal Teknik POMITS, vol. 1, no. 1, 2012.
- S. Li, J. Yuan, J. Luo and W. Ma, "Satellite Attitude Control through Solving a Neural Network," in International Conference on Mechatronics and Automation, Xi'an, 2010.
- "What Is an Orbit?," National Aeronautics and Space Administration, July 2010. [Online]. Available: <https://www.nasa.gov/audience/forstudents/5-8/features/nasaknows/what-is-orbit-58.html>. [Accessed 6 March 2018].
- Types of Orbits," European Space Agency, 17 April 2017. [Online]. Available: [https://www.esa.int/Our\\_Activities/Space\\_Transportation/Types\\_of\\_orbits](https://www.esa.int/Our_Activities/Space_Transportation/Types_of_orbits). [Accessed 6 March 2018].
- H. Riebeck, "Catalog of Earth Satellite Orbits," Earth Observatory, National Aeronautics and Space Administration, 4 September 2009. [Online]. Available: <https://earthobservatory.nasa.gov/Features/OrbitsCatalog/>. [Accessed 6 March 2018].
- Mohsenipour, H. Nemat and dkk, "Attitude Control of a Flexible Satellite by Using Robust Control Design Methods," Intelligent Control and Automation, vol. 4, no. 3, 2013.
- E. Kalman, A New Approach to Linear Filtering and Prediction Problems, Baltimore: Research Institute for Advance Study, 1960.
- K. J. Astrom and T. Hugglund, PID Controllers: Theory, Design, and Tuning, Instrument Society of America, 1995.
- Stella Ogochukwu, A. Desmond Okechukwu, and O. Godfrey Jaegbo, "Construction And Testing Of Ultrasonic Bird Repeller," J. Nat. Sci. Res. www.Online, vol. 2, no. 9, pp. 2225–921, 2012.
- Atmegal 68," pp. 121–134, 2012.
- S. Trajectory, P. Dan, F. Pada, and R. Obstacle, "Journal of Control and
- Tatsuro Baba, "Time-Frequency Analysis Using Short Time Fourier Transform," Open Acoust. J., vol. 5, pp. 32–38, 2012.
- G. De Oliveira et al., "Bird acoustic activity detection based on morphological filtering of the spectrogram," Appl. Acoust., vol. 98, pp. 34–42, 2015.

#### AUTHORS PROFILE



Yulio Ramadhan W obtained her S.Pd.Si from the Yogyakarta National University College of Physics Education, Yogyakarta, Indonesia. Her completed his M.Sc in Physics in 2013 at the Gadjah Mada University. Currently, she is a Assistant Profesor Universitas Nasional, Jakarta, Indonesia

Yulio Ramadhan, Bachelor of Engineering Physics, Universitas Nasional, Jakarta, Indonesia

Hari Hadi S, Associate Profesor of Engineering Physics, Universitas Nasional, Jakarta, Indonesia

# Control of 3-Axis Satellite Reaction Wheel using PID Control Optimized Genetic Algorithms

## ORIGINALITY REPORT

95%

SIMILARITY INDEX

11%

INTERNET SOURCES

95%

PUBLICATIONS

8%

STUDENT PAPERS

## PRIMARY SOURCES

1

"Control of 3-Axis Satellite Reaction Wheel using PID Control Optimized Genetic Algorithms", International Journal of Engineering and Advanced Technology, 2020

Publication

89%

2

Submitted to Universitas 17 Agustus 1945 Semarang

Student Paper

5%

3

[www.ijrte.org](http://www.ijrte.org)

Internet Source

1%

4

[citeseerx.ist.psu.edu](http://citeseerx.ist.psu.edu)

Internet Source

<1%

Exclude quotes Off

Exclude bibliography Off

Exclude matches Off